



**Creative  
Lives**

# **Spaces for Creative**

Taking Creative Approaches to regenerate communities:  
SURF Awards Shared Learning Workshop





# Our Strategic Priorities



- Building strong connections and relationships to support participation in creative cultural activity
- Demonstrating how taking part in creative cultural activity improves social connectedness
- Opening up more public spaces for creative cultural activity



**BOBSIE ROBINSON**  
Vice Chair



**DAVID BRYAN CBE**  
Chair



**ROBIN SIMPSON**  
Chief Executive

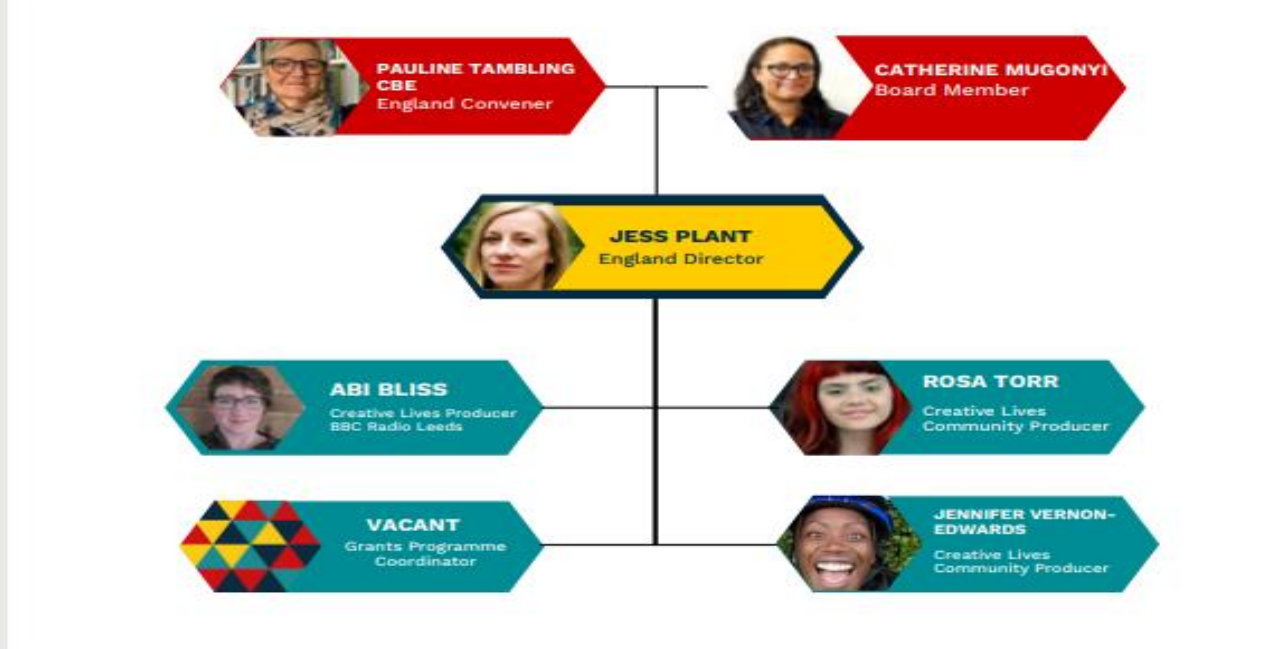


**CHRIS DAVID**  
Treasurer



**GEOFF CROSSICK**  
Board member

**SCOTLAND TEAM**

**ENGLAND TEAM**

**WALES TEAM**

**IRELAND TEAM**

**CEO TEAM**


# Our Scotland Team

Jill Miller OBE  
Scotland Convener



Jemma Neville  
Scotland Director

Kelly Donaldson  
Editor and Scotland  
Support Coordinator



Phoenix Archer  
Community  
Engagement Officer



David McDonald  
Scotland Policy and  
Partnerships Coordinator



# Microgrants



*“The ‘Together Again’ microgrant from Creative Lives enabled our community studio to deliver various projects, events and exhibitions.*

*Our services engage a wide range of participants including autistic young people, low-income families, the elderly, people with mental ill health, and disengaged youth. Creative Lives directly supported RIG to adapt and respond to unique challenges presented by the pandemic, and the investment continues to benefit our delivery to this day.*

*We believe everyone should have the opportunity to benefit from creativity and community and we are grateful for the support of Creative Lives, from grants to advice and information. It is fantastic to have someone championing the arts and all those working to increase access and support the sector. ”*

*“We launched our Travel Empowerment Programme, boosted by the 'Together Again' Microgrant from Creative Lives, which we used specifically to engage with some harder-to-reach families, isolated women with no English language skills, arranging to bring them into our base by taxi and begin building relationships.*

*The financial situation of those navigating the asylum system is precarious, and non-essential travel is unaffordable. But funding travel is only part of the process. We provide a step-by-step service to help each individual build a toolkit of skills they can use to allow them not only to attend our activities in Paisley but navigate the city and beyond.”*



# Awards



# Networks and roundtables

- Thematic
- Regional
- Professional

- **Next event – Beach of Dreams**

- Partnership of arts, cultural, environmental, and community organisations across England, Scotland, Wales, Northern Ireland, and the Republic of Ireland. Artists, scientists, writers and communities will explore creative solutions for their local landscape in response to challenges presented by the climate emergency. **20 June 2023, 14.00-15.00. Online, via Zoom**





# Advocacy

- Listening
- Representing
- Influencing
  
- Spaces for Creativity

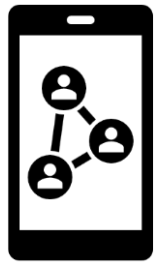




**Creative  
Lives**



[David@creative-lives.org](mailto:David@creative-lives.org)



[@CreativeLivesCL](#)



[www.creative-lives.org](http://www.creative-lives.org)





**Creative  
Lives**

**Thank you**

