

Current priorities in Place based regeneration

- Government Purpose – new First Minister Priorities – **Equality/Opportunity/Community** (public services)
- National Performance Framework
- Bute House Agreement (Green party)
- Climate Change Plan – Just Transition to net zero – Climate Action Towns
- National Strategy for Economic Transformation
- Community wealth building
- Covid recovery
- Cost of Living, Cost of doing Business
- National Planning Framework 4

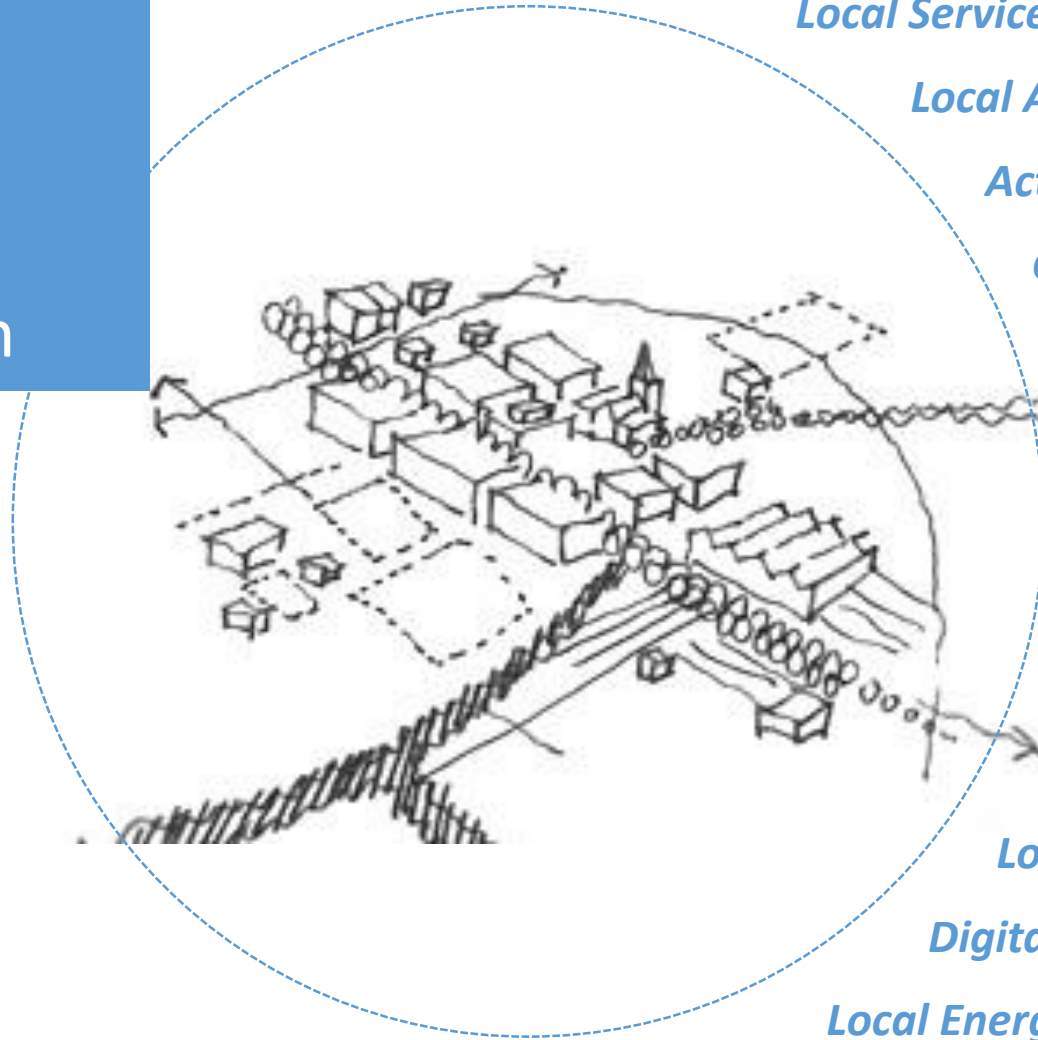
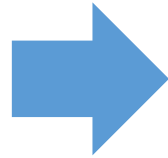
Regeneration - Policy and Funding

Place based Community-led Regeneration

Town Centre Action

Community led regeneration

Community Wealth Building



Local Services

Local Amenities

Active Travel

Green Infrastructure

Community Assets

Local Work Hubs

Anchor Collaborations

Thriving Centre

Community Care

Town Centre Living

Local Learning

Digital Connectivity

Local Energy Systems

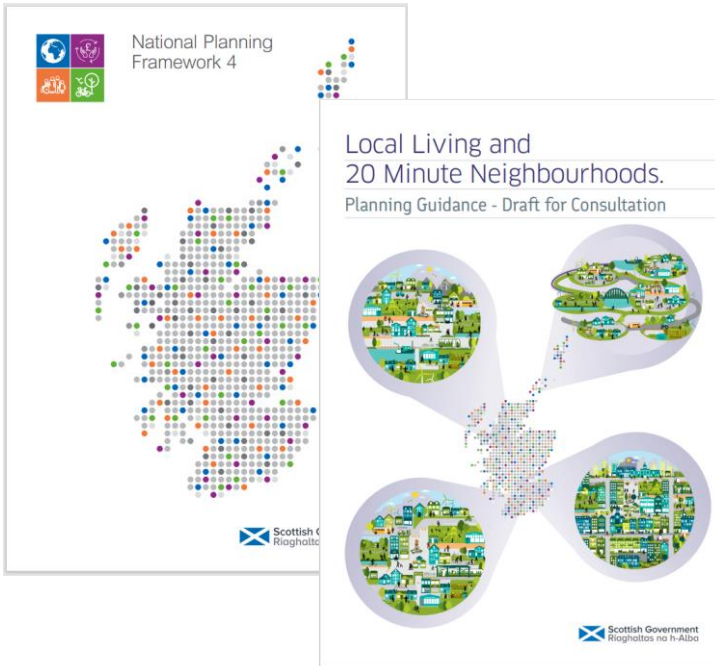
Inclusive Growth - Wellbeing Economy – Climate Change – Low Carbon – Social Renewal - Community Empowerment – Recovery . .

Place based regeneration: policy: Town Centre Action

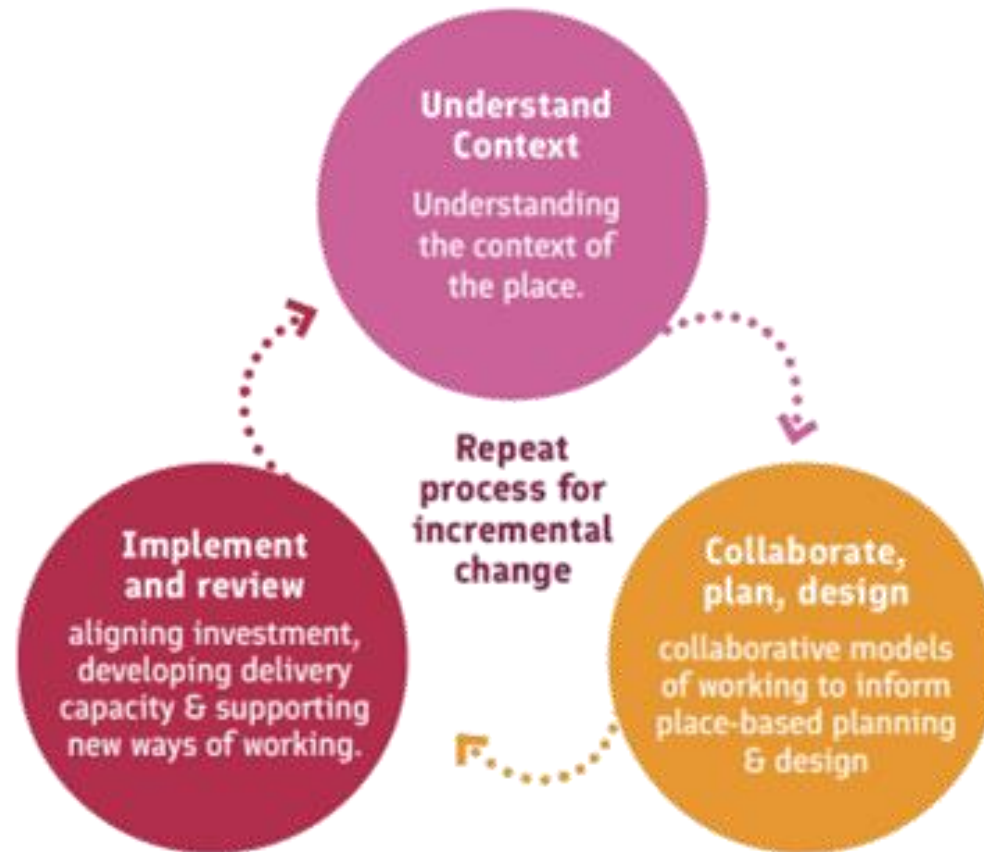
- Review of Town Centre Action Plan - 2020
- A New Future for Scotland's Towns - 2021
- Joint response from Scottish Government and COSLA – April 2022
- Reaffirmed commitment to Town Centre First Principle



Place based regeneration: policy: 20 minute neighbourhoods



Policy Framework in NPF4 supports principles of Local Living



Process for incremental change



Outcomes of Local Living and 20 minute neighbourhoods

Place Based Regeneration – policy to funding : Place Based Investment Programme

Accountability:

The Place Principle:

A common approach adopted across all portfolios.

Conditionality:

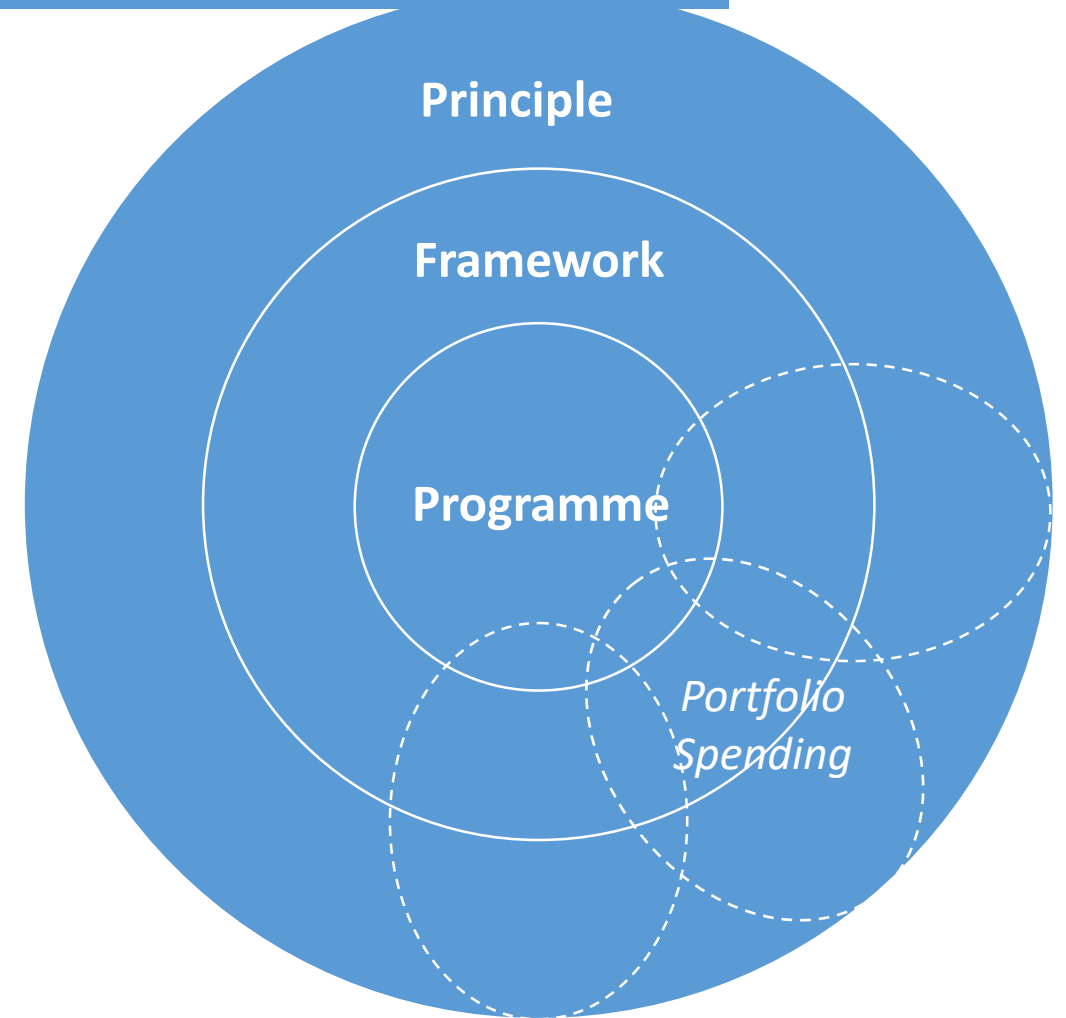
The Place Based Framework:

A consistent appraisal process for all local capital investments.

Oversight:

The Place Based Investment Programme:

An aligned programme of place based investments.



Place Based Investment Programme

- Place Based Investment Programme over this Parliament
- Builds on the impact of the Regeneration Capital Grant Fund and the Town Centre Action Plan
- To accelerate ambitions for place, town centres, regeneration and community wealth building
- Includes an allocation of £140m to Local Government



Regeneration Capital Grant Fund

- Key element of the Place Based Investment Programme
- £25m per year over this Parliament
- Delivered in partnership with COSLA and local government
- Over 200 projects supported in disadvantaged and fragile rural communities across Scotland



PBIP: Regeneration Capital Grant Fund

Learning from success – eg via awards

Castle Mill Works - Creative Industries Incubator Edinburgh – £1,925,754
Edinburgh Architectural Award 2020 - Creative

EGG Shed – Ardrishaig - RCGF £580,000
Shortlisted in The Royal Incorporation of Architects in Scotland 2020 awards

The Fraserburgh Conservation Area Renewal Scheme Townscape Heritage Project won the RTPI Scotland Best Project category and the overall Award for Planning on **16 June 2022**.



PBIP: Demonstrators programme, Community Capital and Clyde Gateway

- 5m pa Clyde Gateway – learning from awards and success
- Demonstrator projects – new – evaluation planned working with SFT
- Community Capital - new



Vacant and Derelict Land Investment Programme

- To support innovative local approaches to tackling persistent vacant and derelict land
- Part of a 'just transition' to net-zero
- £50m over this Parliament
- Complements the Place Based Investment Programme

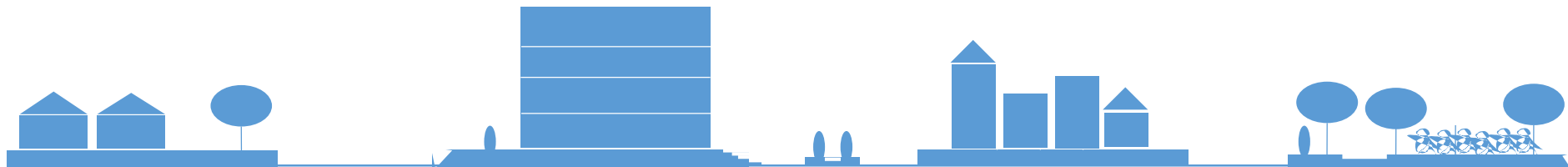


Empowering Communities Programme

The programme provides resource funding complementing our capital investment supporting community-led regeneration, enabling communities to tackle poverty and inequality on their own terms.

It is a range of funds and strategic partnerships enabling communities to:

- create local plans;
- acquire /develop local assets;
 - create jobs; and
- deliver services /projects in response to local needs.



Empowering Communities Programme

Strengthening Communities Programme:



support and funding to enable Community Anchor Organisations to build their resilience and sustainability, and to deliver more ambitious projects and services.

Investing in Communities Fund:



supporting and empowering communities to identify and deliver solutions to local priorities **and challenges enabling them to tackle poverty, child poverty, inequality and rural disadvantage on their own terms.**

Strategic Partnerships:



Includes for example: sponsorship of Scotland's Regeneration Forum

- sponsorship of the Community Ownership Support Service (COSS);
- Coalfields Regeneration Trust to deliver their programme regeneration;
- Scottish Community Development Centre (SCDC) helping build community capacity;
- the Wheatley Partnership delivering programmes supporting over 1,000 people in some of our most deprived communities

Example : Aberdeen Council: Greyhope Bay Project

- Greyhope Bay a charitable organisation based in Aberdeen, offering dolphin watching from the café and community space at Torry Battery. The Greyhope Bay Centre is an "off-grid" eco-facility built by converting shipping containers and forms part of 5-year plan to establish Torry Battery as a vibrant destination in Aberdeen.
- This project has benefitted from multiple grants.
- Awarded £50,000 to support capital costs of construction and the completion of the Greyhope Bay Centre.



Aberdeen Council: Greyhope Bay Project

Greyhope Bay Project aligns with the PBIP aims and objectives:

- community-led organisation;
- provides visitor and community space at Torry Battery;
- educates visitors and community on sustainability, wildlife, history (provides regular tours, educational events);
- has a cafe with strong environmental focus (operates off-grid using a hybrid energy and circular rainwater treatment technology, work with small batch local roasters whose ethical and environmental ethos fits with theirs);
- bicycle friendly (located on the National Cycle Network Route 1. There are 16 spaces for bicycles on racks located);



Learning and developing

- ▶ Learning with local government, communities and all partners
- ▶ Covid and cost of living challenges - capital programmes - construction costs and delays
- ▶ PBIP designed to provide long term funding - challenges of shorter term funding and need for more resource funding
- ▶ Town Centre Action - challenges on reserved matters eg VAT
- ▶ Policy conflicts eg Town Centre Living, net zero projects - higher costs
- ▶ Interested to hear from your experiences