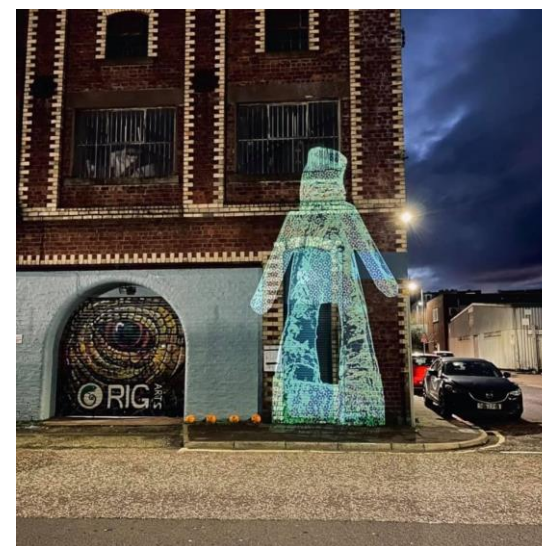
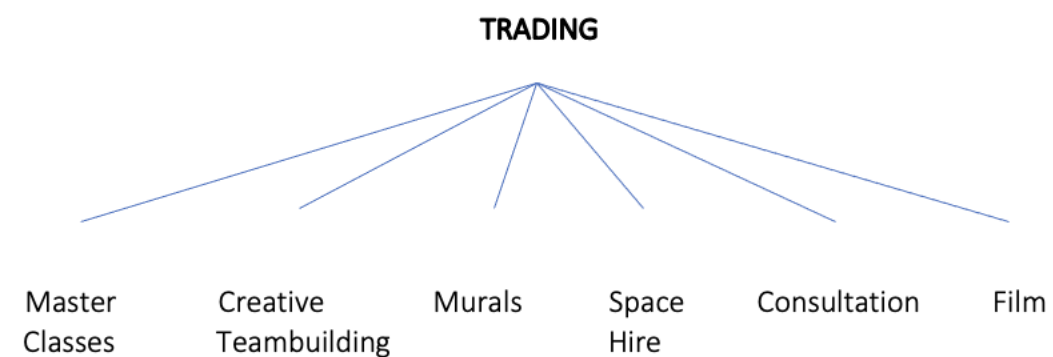
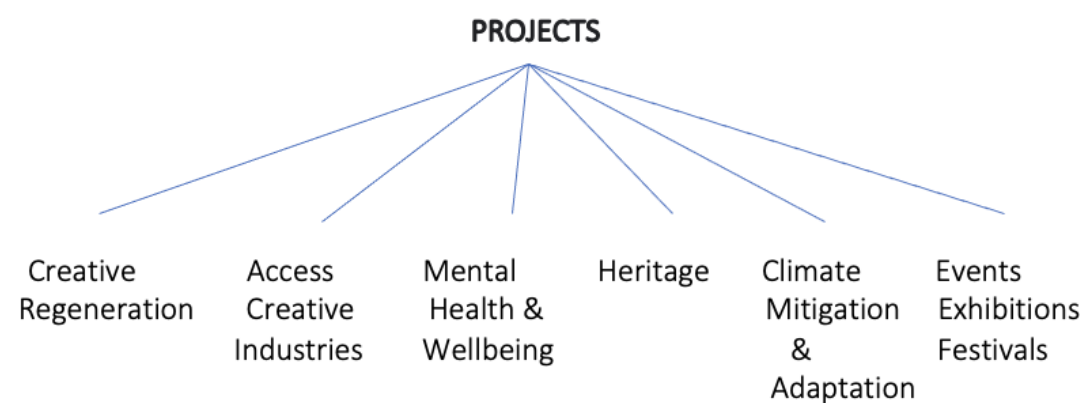




RIG Arts

Creative Regeneration





@rigartsinverclyde



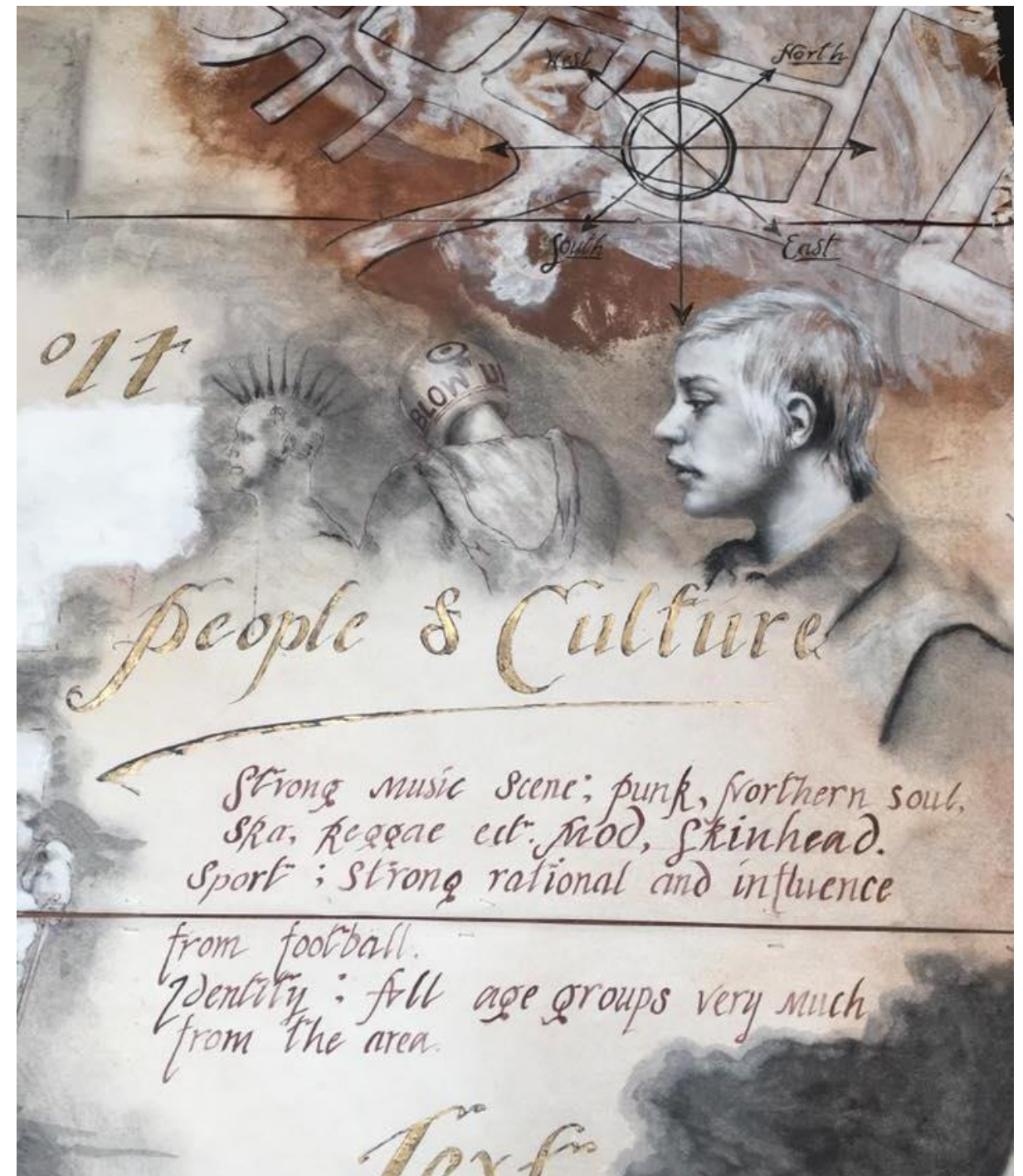
@RIGArtsGreenock

@rigartsgreenock



Creative Regeneration

- People, Culture & Community
- Authentic Connections
- Participation
- Co-Creation
- Work emerging from the Cultural Archaeology of the **Place**
- Social Cohesion





Identifying Need | Keeping Connected



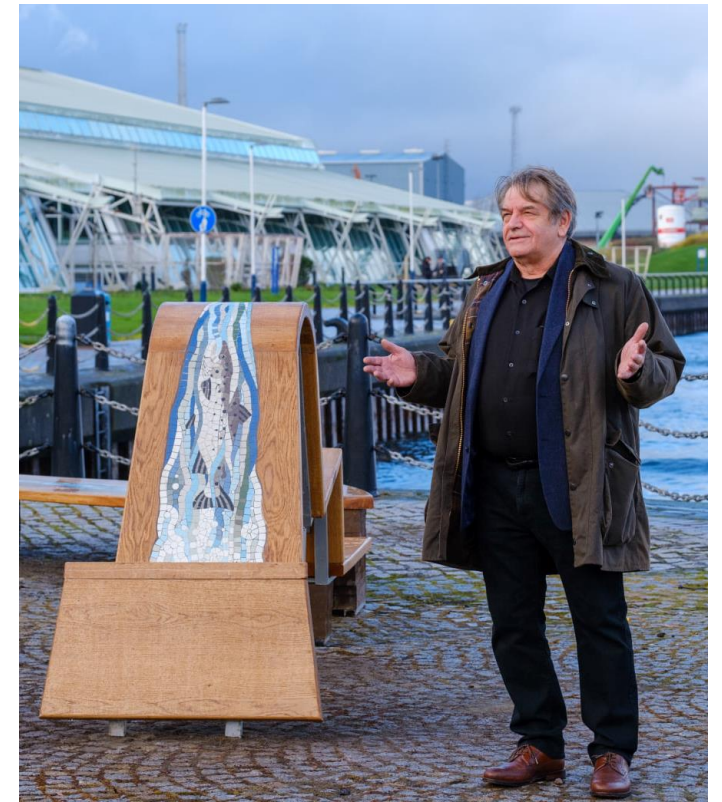
From this...



to this...



Co-Creation | Cultural & Design Activity Building Better Places

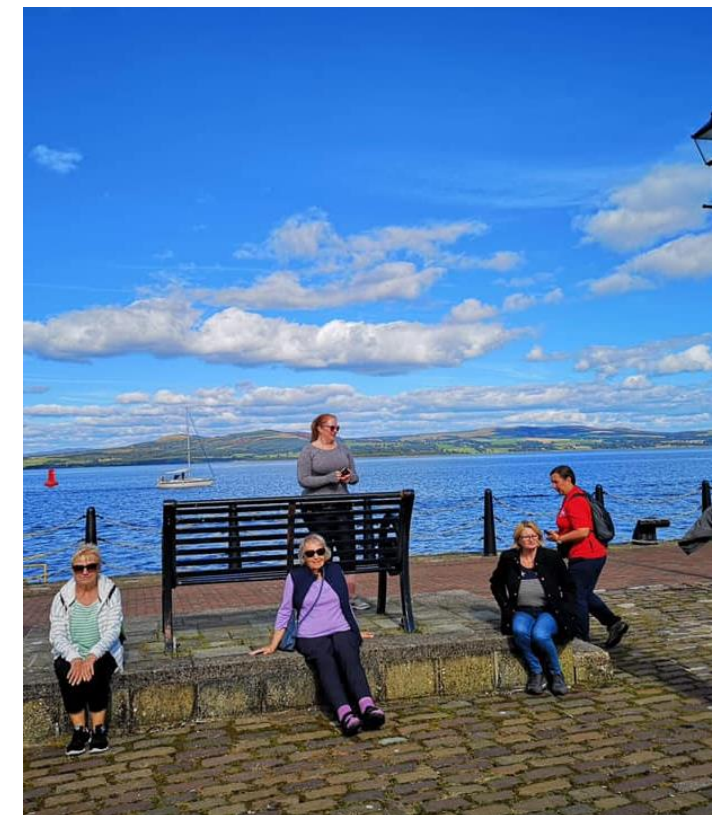
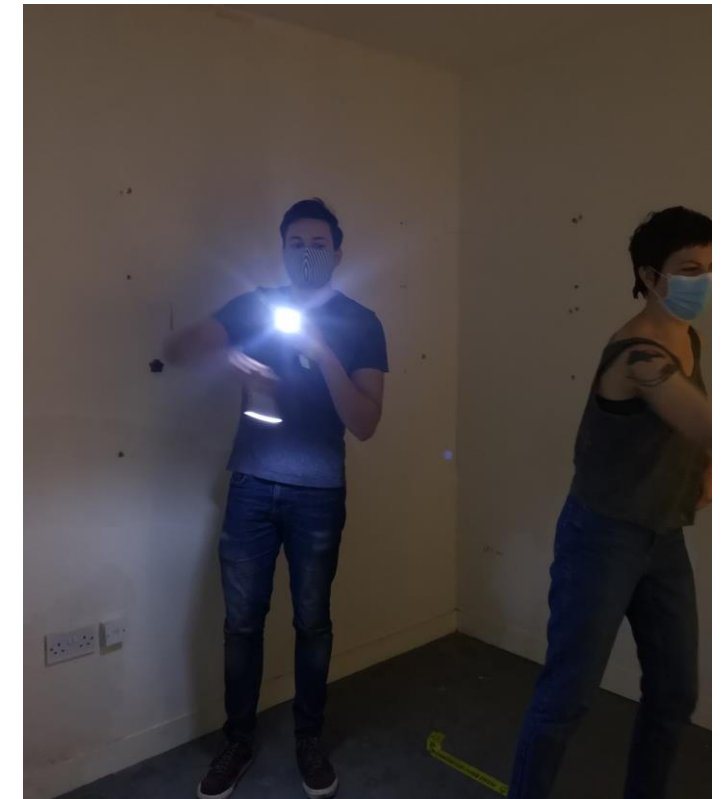


Creative Conversations | Sustrans 2020 - 2021

Creative Consultation Phase 1 and Community Co-Created Public Art Project Phase 2 | Greenock Waterfront
Yard Men – Jason Orr | Ebb & Flow – Alan Potter | Mechanical Animals – Tragic O'Hara



Balance

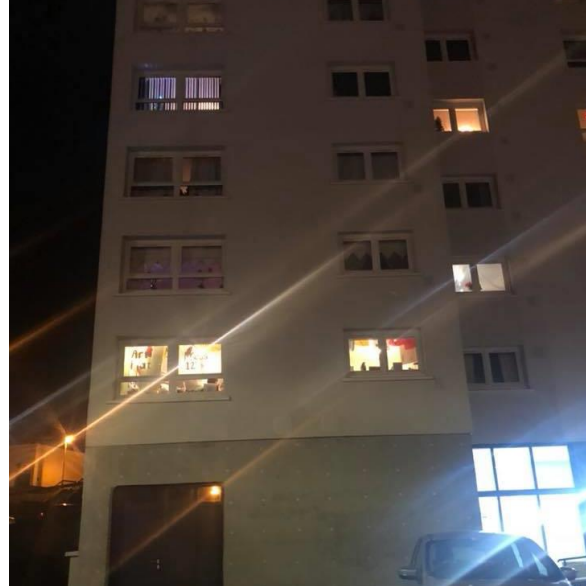


Creative Conversations | Sustrans 2020 - 2021

Creative Consultation Phase 1 and Community Co-Created Public Art Project Phase 2 | Greenock Waterfront
 Yard Men – Jason Orr | Ebb & Flow – Alan Potter | Mechanical Animals – Tragic O'Hara

Community Champions





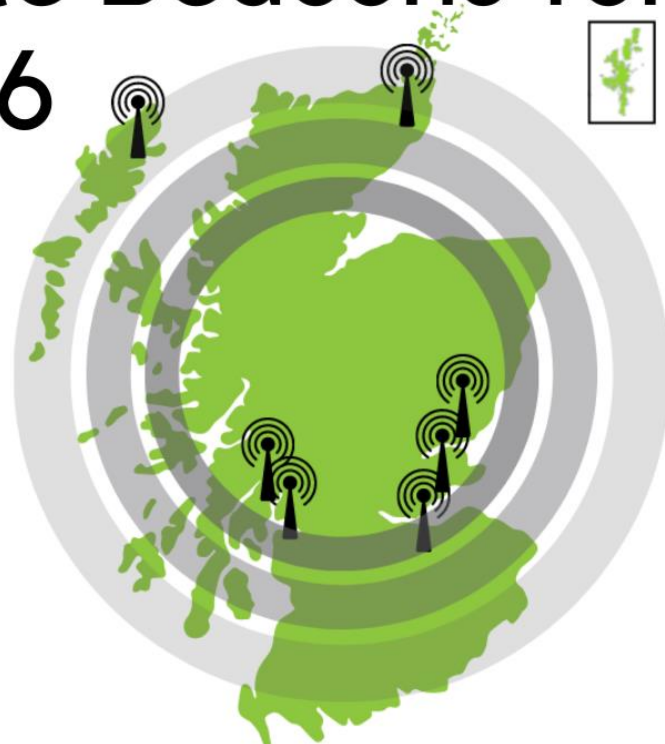
Remove Barriers | Inclusion

RIG Broomhill Art Flat – Art Bus – WHA Community Flat, Seedhill – Pop Up Spaces

Partnerships



Climate Beacons for COP26



Inverclyde council CVS Inverclyde Communities and the Voluntary Sector Culture Collective Co-Champions Culture

ARTIST OPEN CALL

COMMUNITY PRACTICE RESIDENCIES

GREENOCK SOUTH/SOUTH WEST: GRIEVE ROAD



INVERCLYDE CULTURE COLLECTIVE

The Galoshans Festival is an annual arts festival celebrating Inverclyde's unique Halloween tradition



Festivalisation

Get People & Art
Out Into the Streets



Evaluation

RIG employs a continuous improvement methodology

Depending on the project film or a case study can also be used to capture the process as part of the evaluation as outlined below

Creative Conversations | Consultation Evaluation

https://www.youtube.com/watch?v=nLWNg2UB6_0

Creative Conversations II | Implementation Evaluation

<https://www.youtube.com/watch?v=0A00D-2y7xo>

The Broomhill Project EDAS Case Study published

<https://inclusivegrowthcommunityofpractice.blog/2019/02/08/case-study-the-broomhill-project/>

Challenges



The illustration features a pair of hands in the center-left, stitching a piece of light pink fabric with a red thread. To the right, a pair of scissors with red blades and blue handles is shown cutting the fabric. Above the hands are two buttons: a blue one with four holes and a red one with four holes. Below the hands is a large, stylized graphic of a blue crown. The word 'FIXING' is written in large, bold, red capital letters across the middle of the crown. Below 'FIXING', the word 'Fashion' is written in a white, cursive script font. The entire graphic is set against a background of pink and blue fabric folds.

FIXING *Fashion*

RIG Arts will continue to support regeneration through creative intervention by remaining responsive and proactive in meeting the needs of the community

By continuing to evolve and identify priorities collaboratively, RIG Arts will continue to support the community through people-led action, facilitated by artists

RIG Arts values and recognises the varied benefits of creative participation on people's lives at all levels;

Community	Creative Conversations, co created public artworks project, Sustrans
Local	Annual Galoshans Festival, an annual arts festival celebrating Inverclyde's unique Halloween tradition, with a strong focus on outreach and engagement deeply rooted in local culture. RIG has embedded the festival at a grassroots level, positively raising Inverclyde's profile
Personal	Positive impacts on participants and their families

New Technologies

- **Projection Mapping**
Urban regeneration- key buildings & interactive
- **Mogee Technology**
Buildings became the instrument
- **Augmented Reality/QR Codes**
Interactive Heritage Trails
- **Drone Footage**
Community Consultation Tool to create a cohesive community vision. Film making tool
- **Plastic Recycling Machines**
Educational Carbon Literacy Changing Behaviours
- **3D Printing & 3D Pens**
Using recycled polylactide (PLA) plastic donated milk bottles
- **Green Screen**
Film making & animation

