

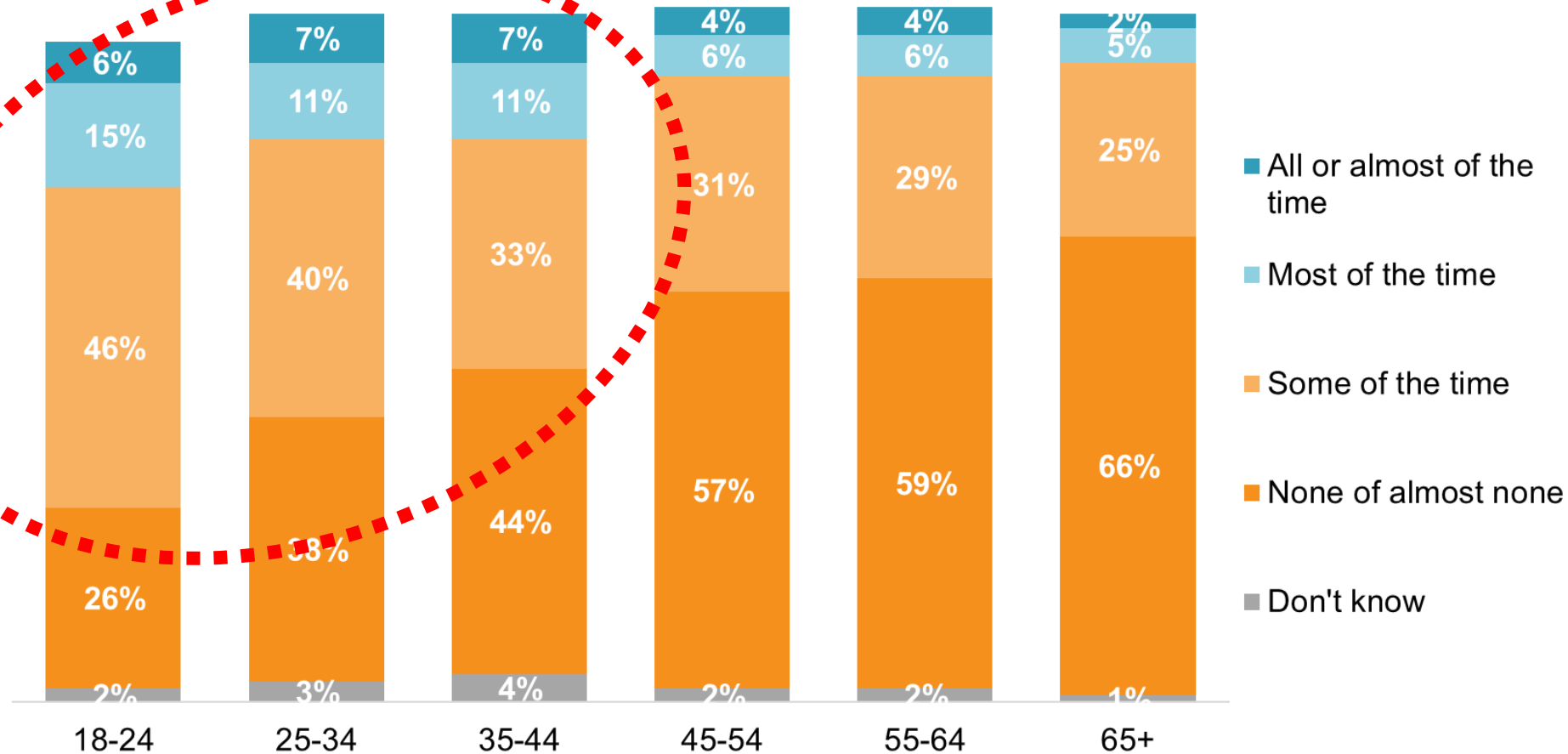
20 minute places

Informing decisions

5 observations on impact

- 1 **Need not numbers**
- 2 **Quality of experience**
- 3 **Relevant provision**
- 4 **Right place**
- 5 **Connected communities**

How often felt lonely in the past week by age



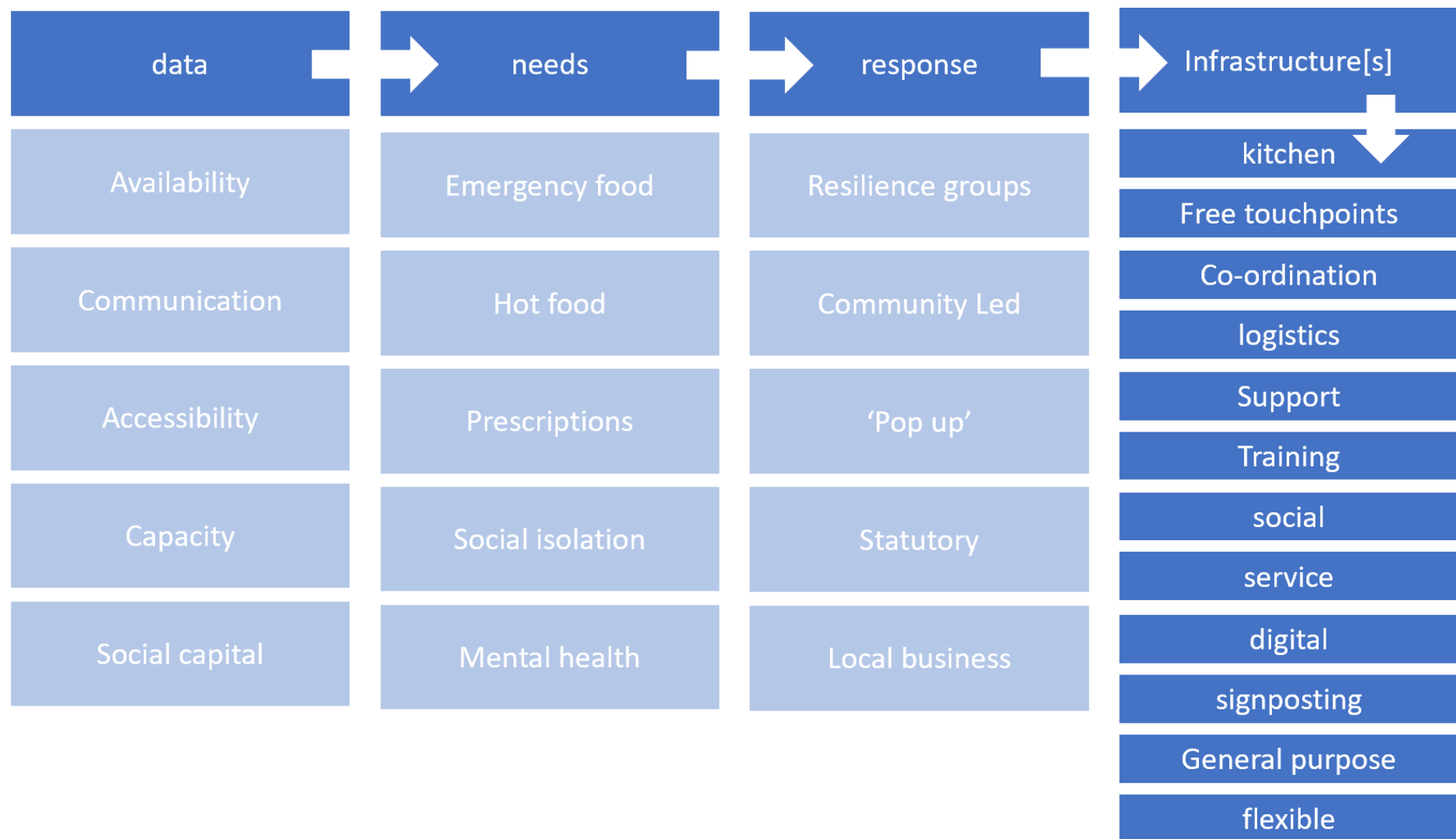
Source: YouGov weekly survey. Bases n=18-24 (212), 25-34 (449), 35-44 (504), 45-54 (526), 65+ (798)

Community learning

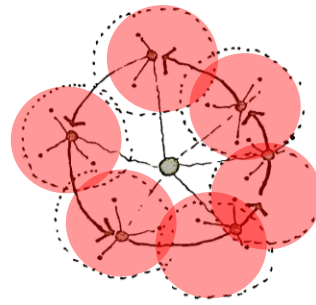
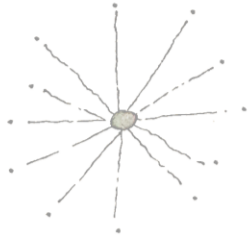
*Community
resilience*



Resilience infrastructures

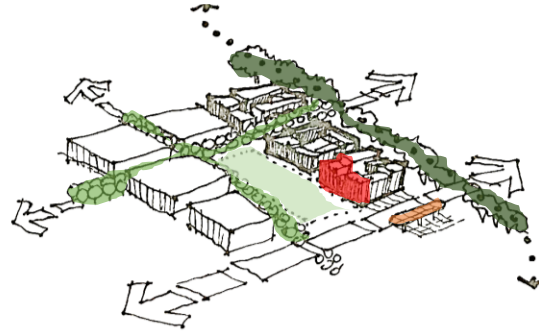
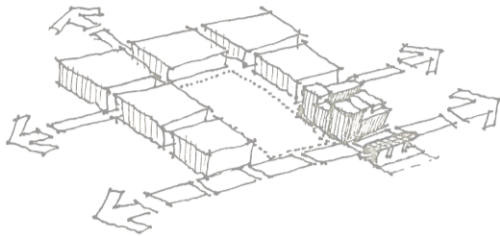


Covid learning, existing places



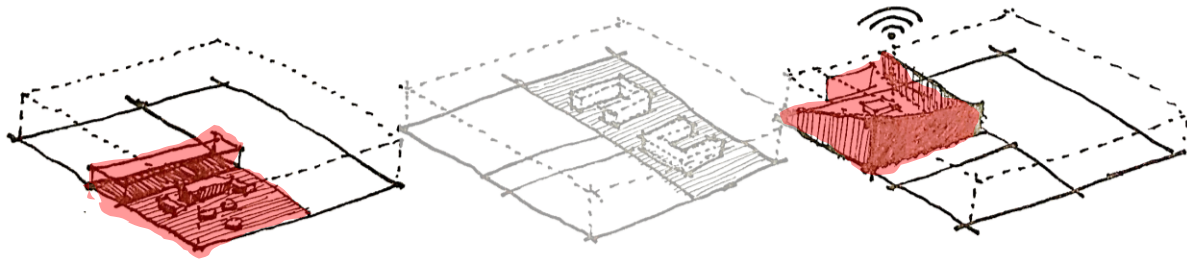
Distributed network

Accessible places



Accessible space

Integrated facilities

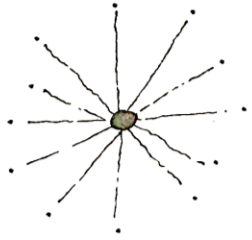


Wellbeing, kitchen, social

Supported digital spaces

Core functions

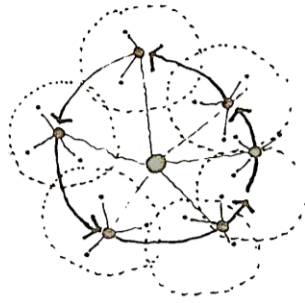
Using learning, changing places



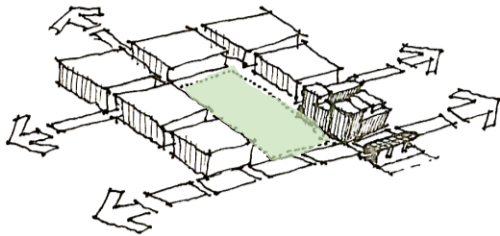
Existing hub & spoke



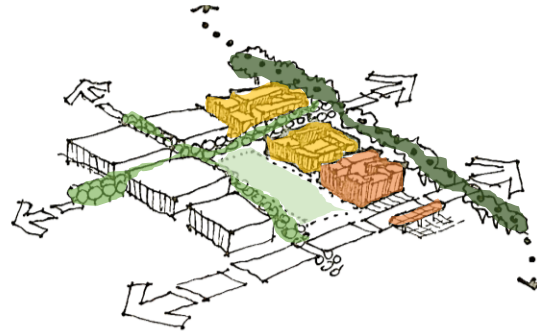
New distributions: covid hubs



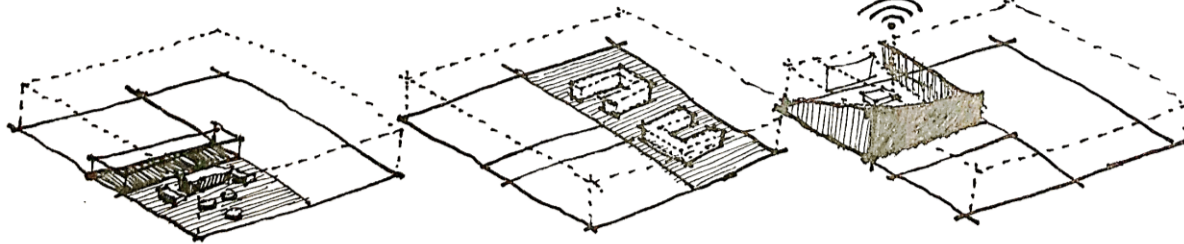
20 min places: connectivity



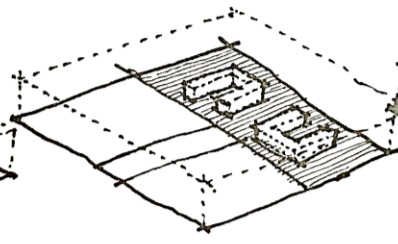
Public space and landscape



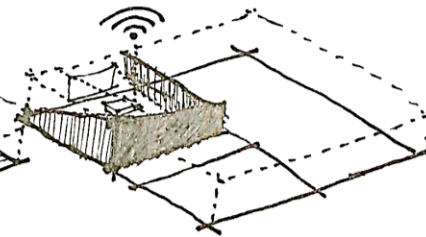
Low carbon localism



Wellbeing, kitchen, social



Collaboration and co-work



Supported digital spaces

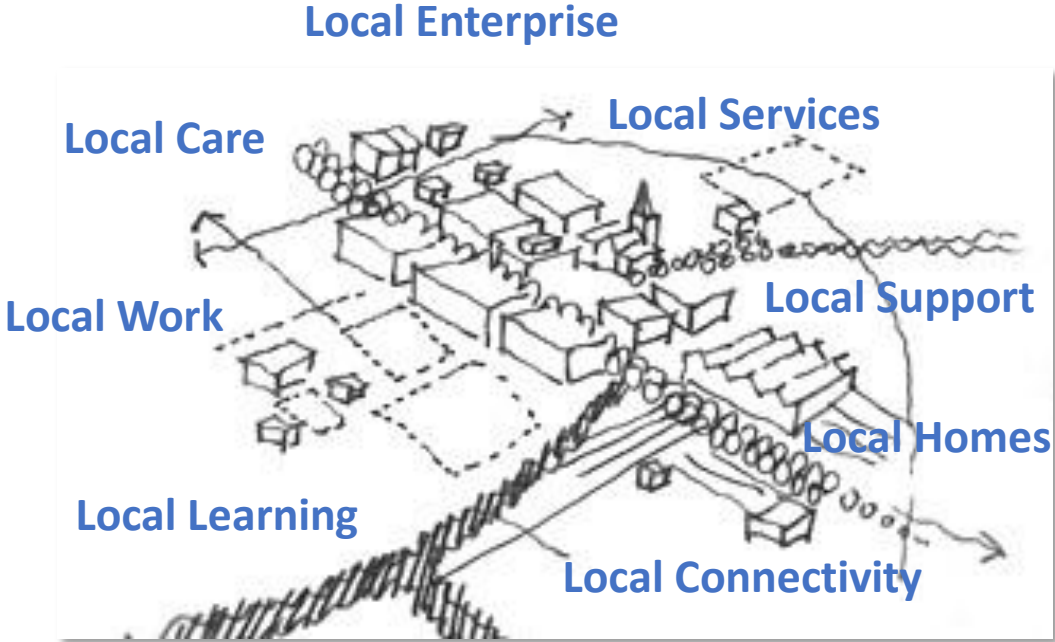
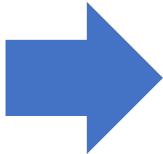
community data

Access & connectivity

Community hearts

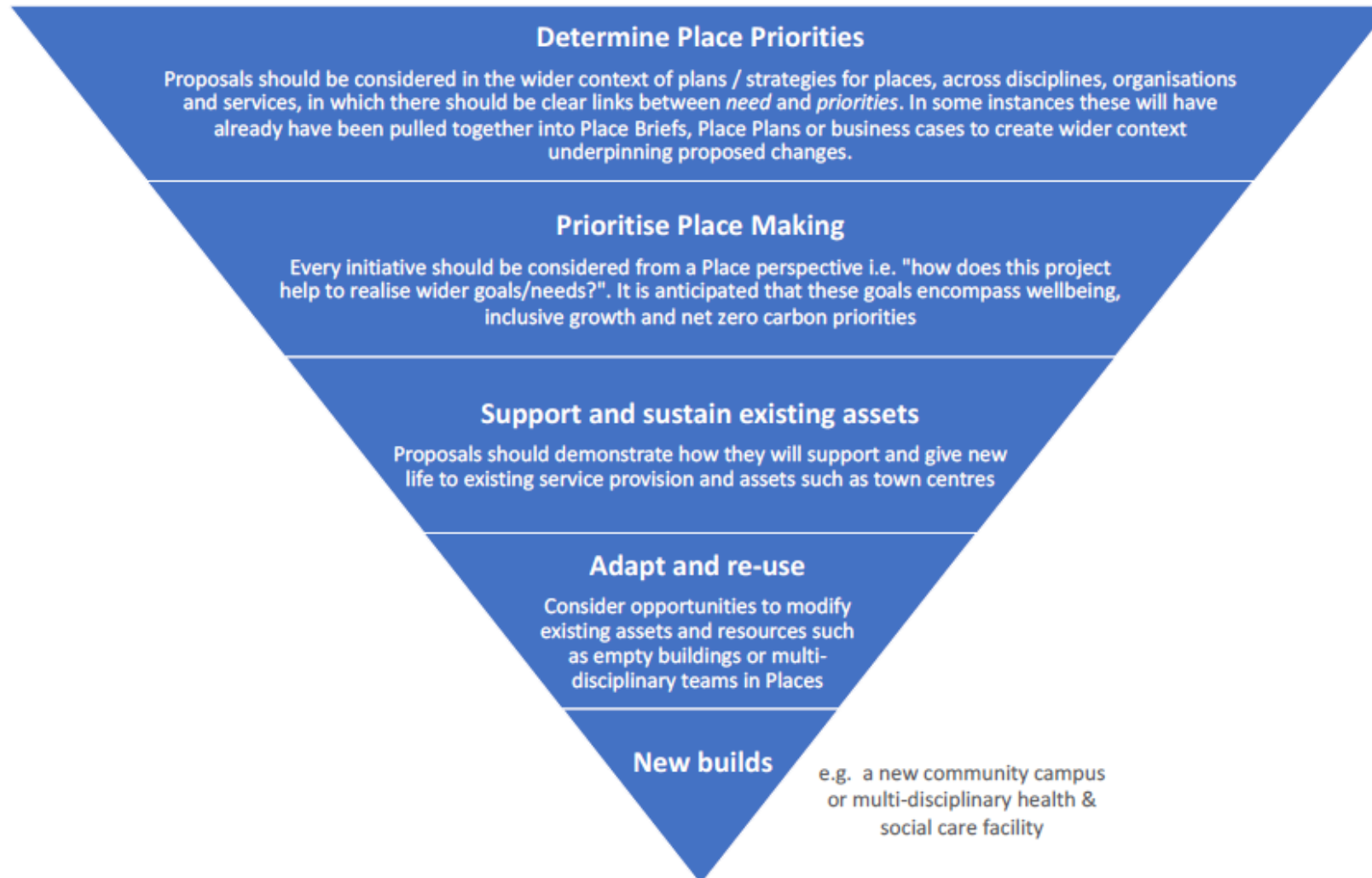
Community infrastructures

Place Based Investment Programme

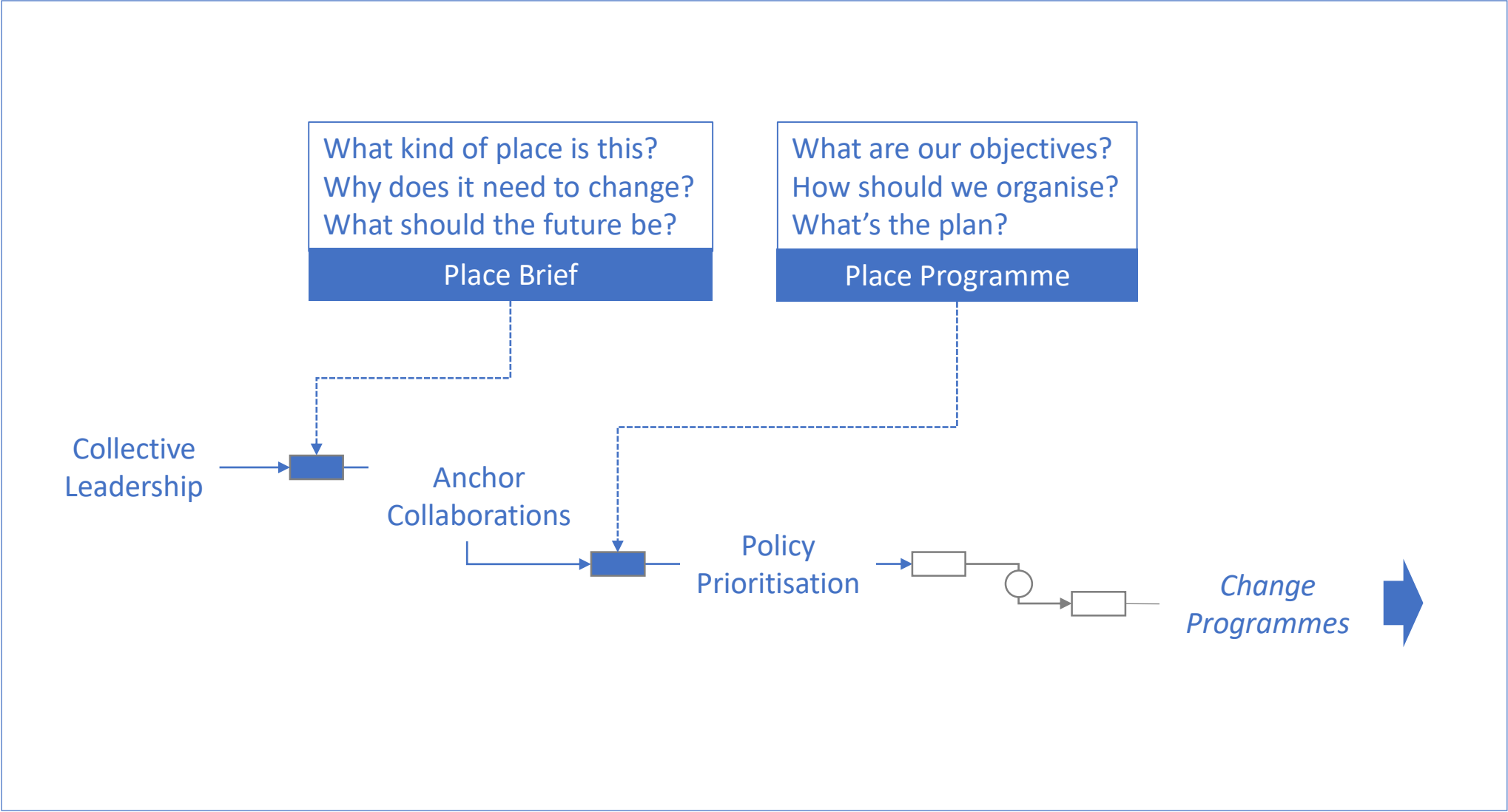


Inclusive Growth - Wellbeing Economy – Climate Change – Low Carbon – Social Renewal - Community Empowerment – Resilience

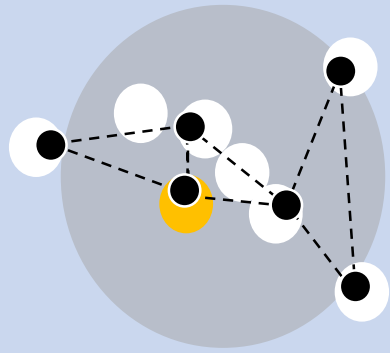
Investment hierarchy [after IIP]



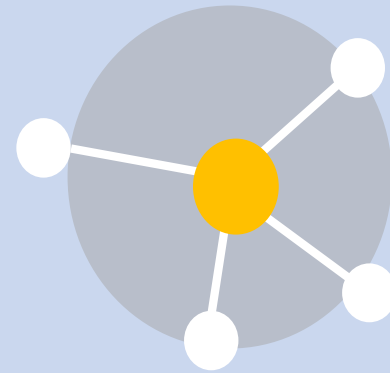
Tools of change



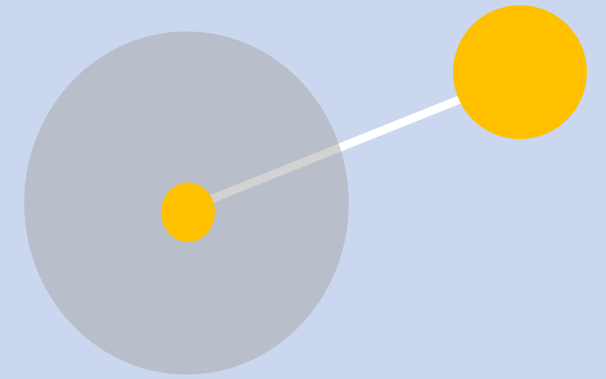
Influence: right thing, right geography, right reason



Make more of existing



Hub and spoke



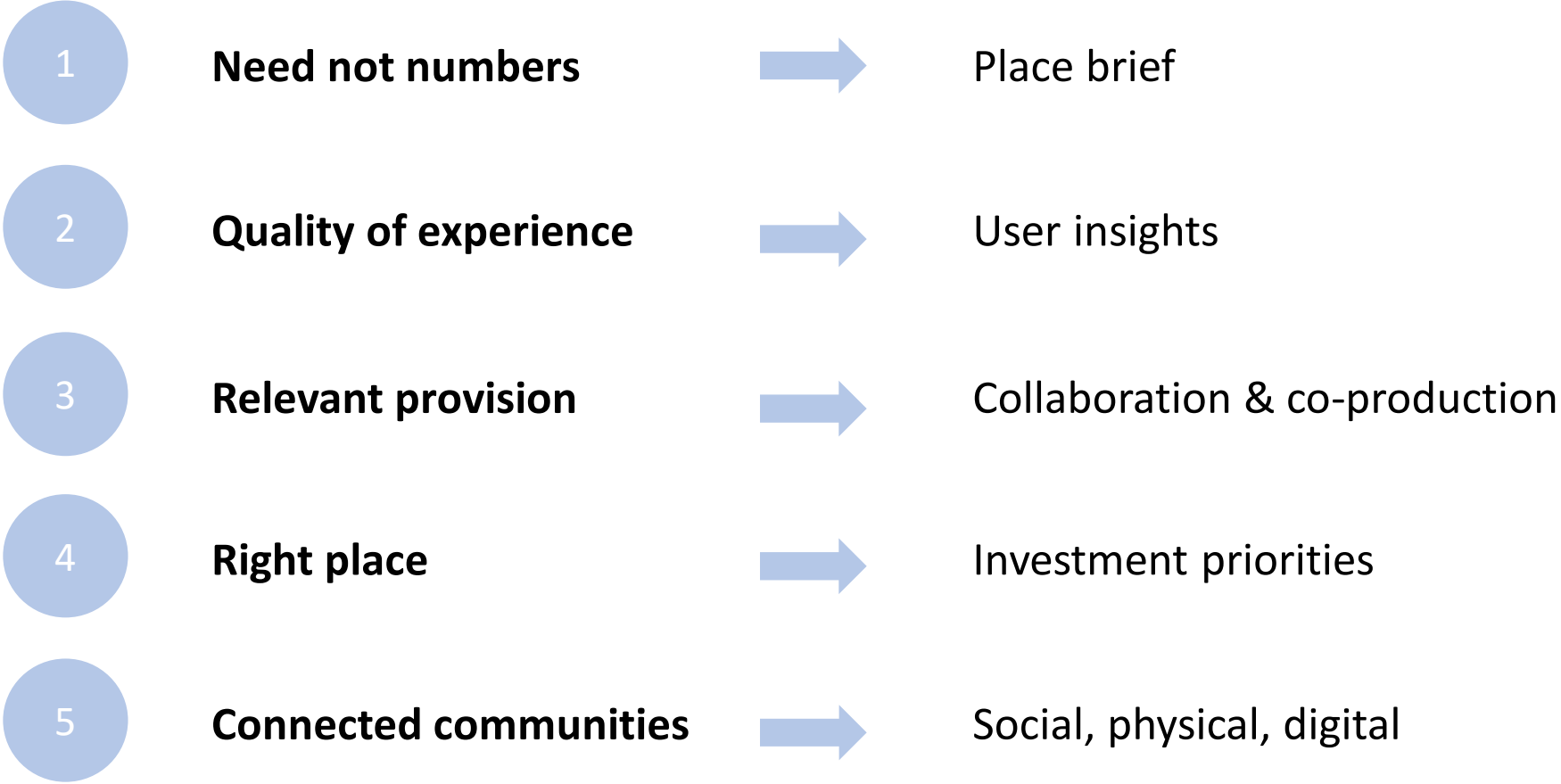
Interdependent

- *Leverage covid learning*
- *Create visibility of local capability*
- *Build pathways and signposting*
- *Adapt existing underutilised capacity*

- *Community, social, skills and collaborative priority to hub*
- *Specialisms in spokes/thematic hubs*
- *Re-location of services*
- *Release space for regeneration*

- *Local provision to meet local need*
- *Blended provision to bridge needs*
- *Regional specialisation*

5 observations on impact



Thank you



Diarmaid Lawlor

diarmaid.lawlor@scottishfuturestrust.org.uk

07923 219819