

‘Living Well Locally’

Could Drymen be a 20 Minute
Neighbourhood?



DISCOVER
DRYMEN



Forth
Environment
Link
LINKING PEOPLE AND
THE ENVIRONMENT

Richard Boddington



20 Minute Neighbourhood



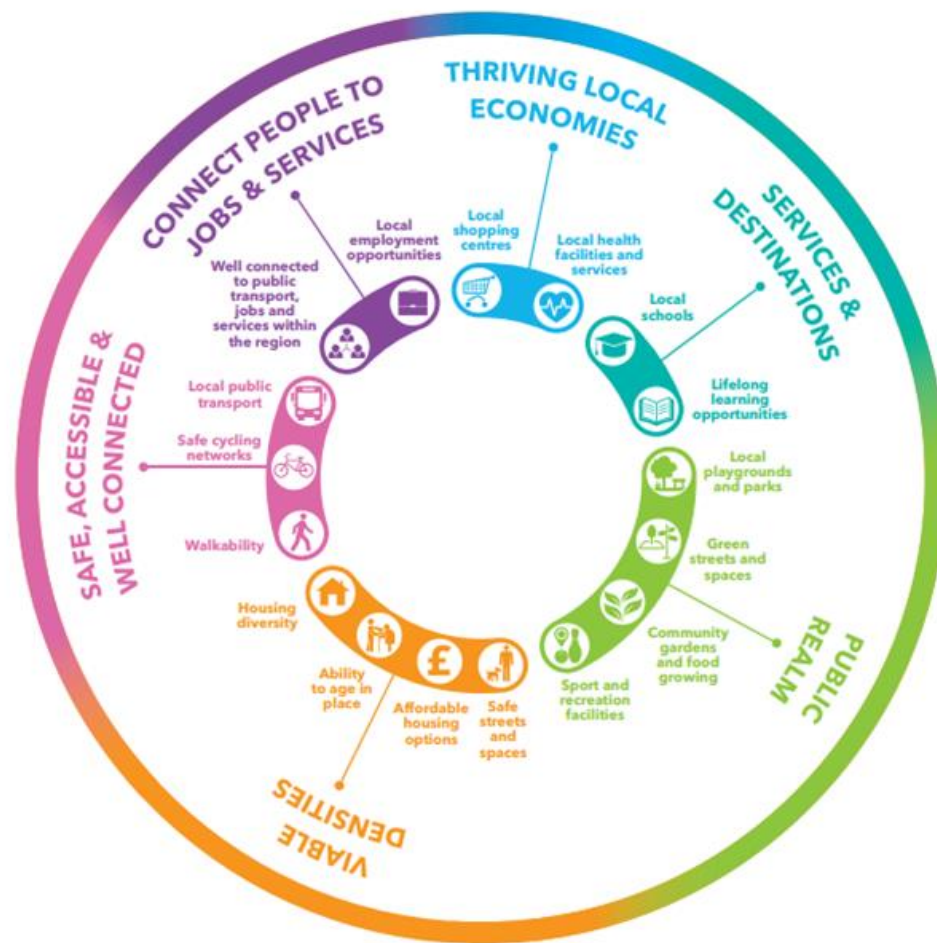
‘Where people can meet their needs within a 20 minute walk from their house – enabling people to live better, healthier lives and supporting our net zero ambitions.’

Drymen Village



- Approx. 800 residents
- Rural location near Loch Lomond
- 30 min drive from Glasgow
- Active Development Trust

FEATURES OF A 20 MINUTE NEIGHBOURHOOD



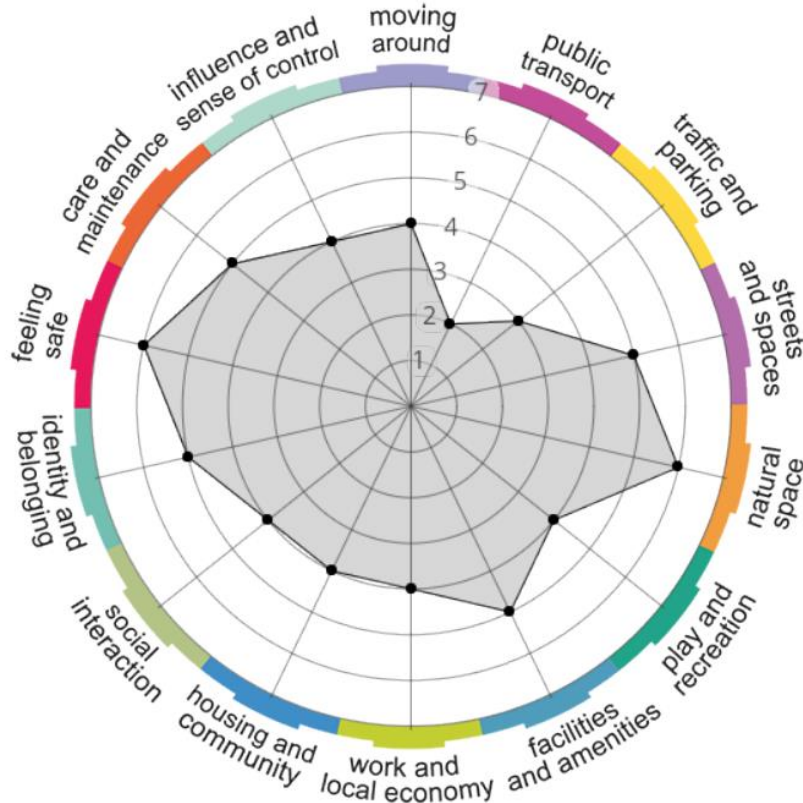
Engagement

- Survey & place standard questionnaire
- Primary school map activity
- Joining local gatherings
- Walking interviews
- Cycle bus ride
- Online talks
- Pop-ups with 'place passport'
- Capacity building sessions



Mapping exercise with Drymen Primary

Findings for Drymen



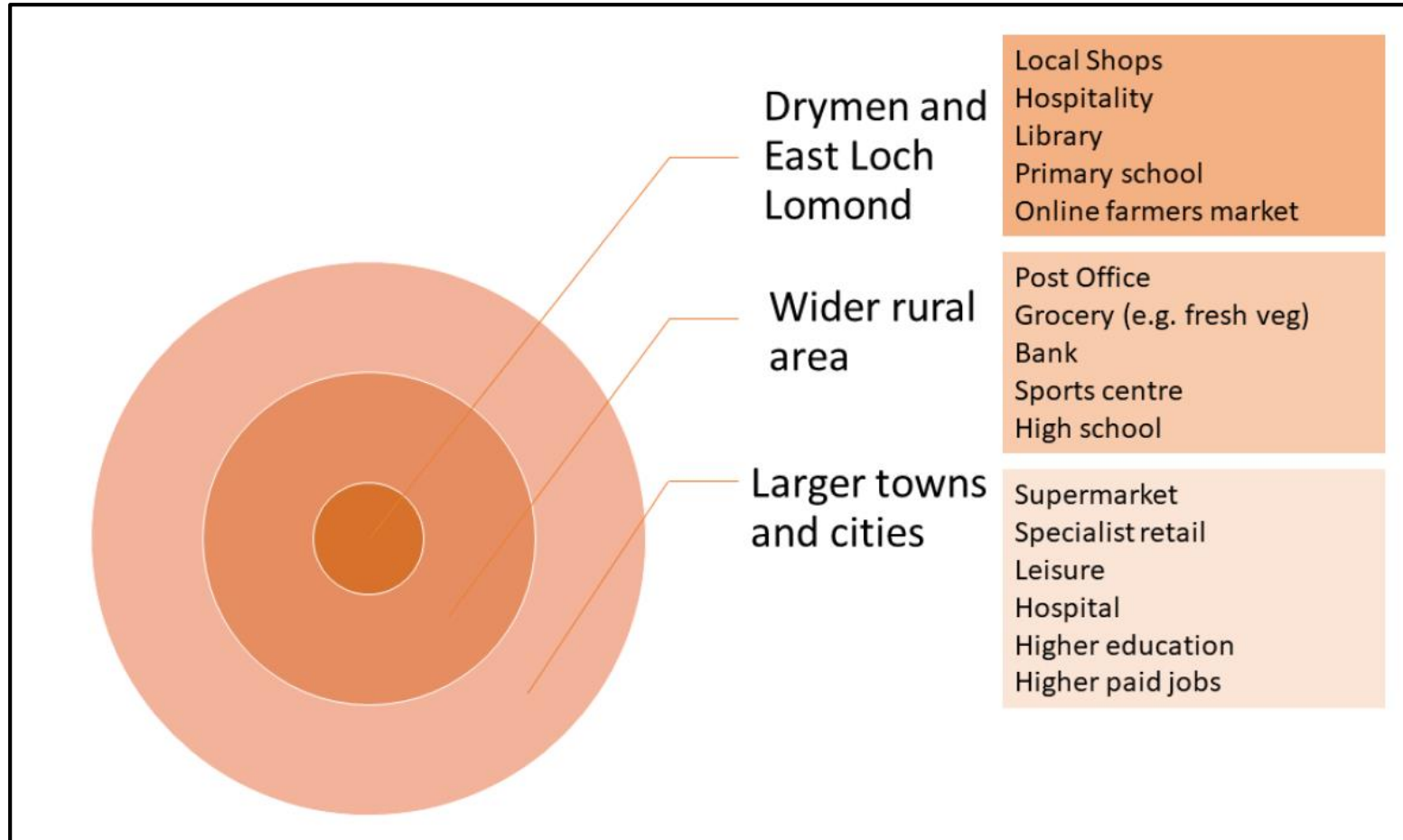
Lower room for improvement:

- Identity
- Feeling safe
- Natural space

Higher room for improvement:

- Public transport
- Traffic
- Moving around
- Housing, work, social, recreation

Location of Amenities



Priorities



• Movement



- Shared paths through and between villages
- Public transport (local and tourism)
- Dedicated off-street parking
- Pedestrian priority
- Park & ride / cycle for tourist traffic



Other Priorities



Space



- Multi-use hubs in underused buildings
- Green spaces for growing, biodiversity and seating

Stewardship



- Being listened to at Local Authority level
- Maintenance – litter, recycling, dog mess
- Maintenance – footpaths, road surfaces

Civic



- Cement identity and share resources
- Safe streets – lighting, speeding vehicles



Resources

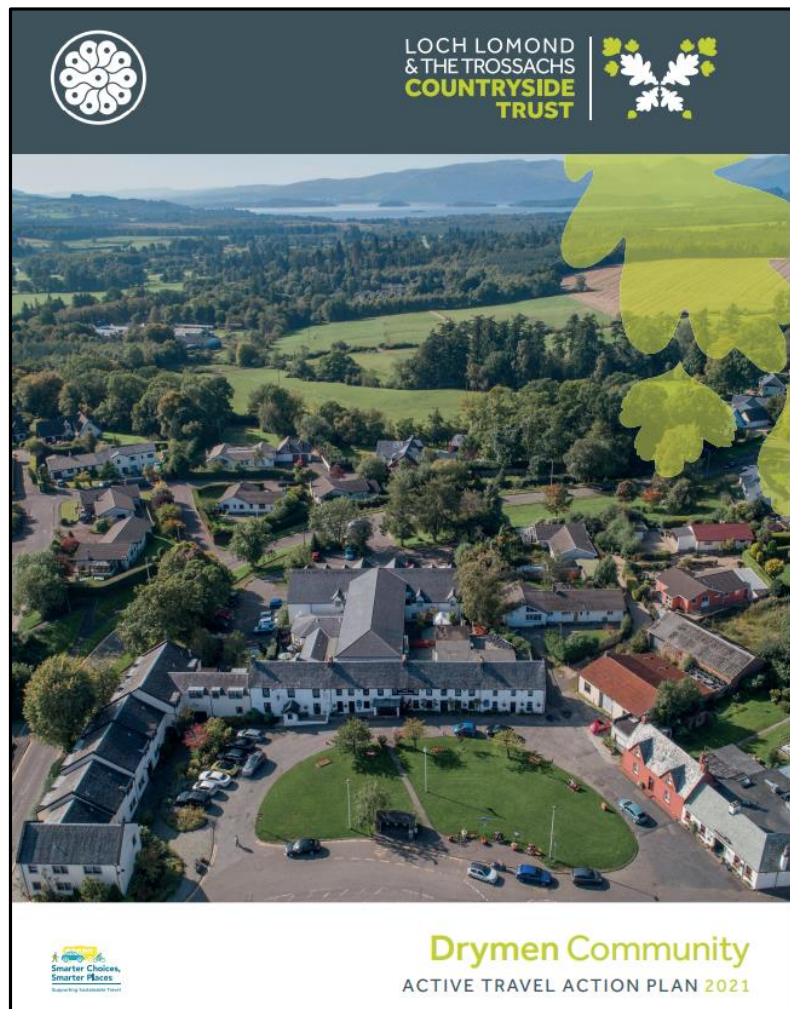
- Venues to meet and connect with others
- Quality of high street – grocery, bank, post office
- Career opportunities
- Affordable, appropriate, sustainable housing

Drymen ATAP

Undertaken 2021 with LLTCT
116 survey responses

Top Five Concerns:

- Traffic
- Lack of safe routes to local villages
- Poor accessibility (poor footways)
- Lack of connectivity
- Weather and Distance



Actions to Date

- **Two E-bikes for free loan**
- Weekly “Drymen Cycle Meanders” led rides
- Drymen Cycle Meanders leaflet of local cycle routes
- Dr Bike Session
- Improvement of pavements around Village Square
- Solar powered E-bike chargers on bus shelter
- Tool Station and Top-up Tap



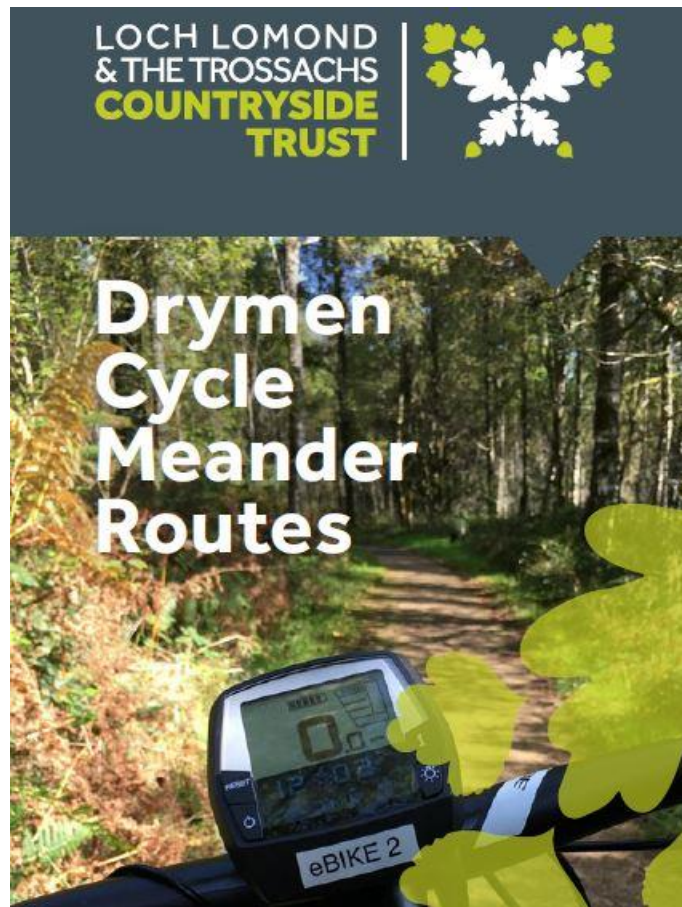
Actions to Date

- Two E-bikes for free loan
- **Weekly “Drymen Cycle Meanders” led rides**
- Drymen Cycle Meanders leaflet of local cycle routes
- Dr Bike Session
- Improvement of pavements around Village Square
- Solar powered E-bike chargers on bus shelter
- Tool Station and Top-up Tap



Actions to Date

- Two E-bikes for free loan
- Weekly “Drymen Cycle Meanders” led rides
- **Drymen Cycle Meanders leaflet of local cycle routes**
- Dr Bike Session
- Improvement of pavements around Village Square
- Solar powered E-bike chargers on bus shelter
- Tool Station and Top-up Tap



Actions to Date

- Two E-bikes for free loan
- Weekly “Drymen Cycle Meanders” led rides
- Drymen Cycle Meanders leaflet of local cycle routes
- **Dr Bike Session**
- Improvement of pavements around Village Square
- Solar powered E-bike chargers on bus shelter
- Tool Station and Top-up Tap



Actions to Date



- Two E-bikes for free loan
- Weekly “Drymen Cycle Meanders” led rides
- Drymen Cycle Meanders leaflet of local cycle routes
- Dr Bike Session
- **Improvement of pavements around Village Square**
- Solar powered E-bike chargers on bus shelter
- Tool Station and Top-up Tap



Actions to Date

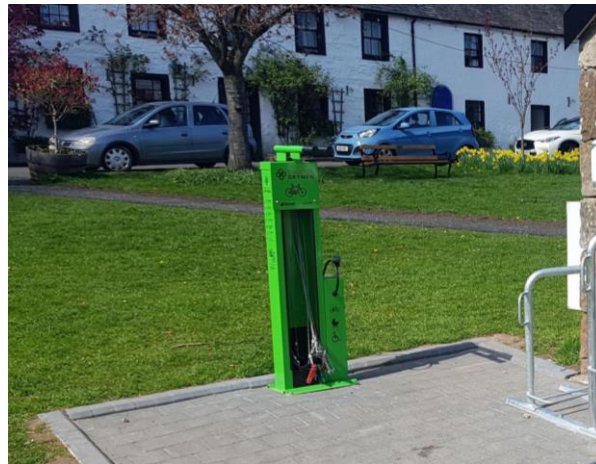


- Two E-bikes for free loan
- Weekly “Drymen Cycle Meanders” led rides
- Drymen Cycle Meanders leaflet of local cycle routes
- Dr Bike Session
- Improvement of pavements around Village Square
- **Solar powered E-bike chargers on bus shelter**
- Tool Station and Top-up Tap



Actions to Date

- Two E-bikes for free loan
- Weekly “Drymen Cycle Meanders” led rides
- Drymen Cycle Meanders leaflet of local cycle routes
- Dr Bike Session
- Improvement of pavements around Village Square
- Solar powered E-bike chargers on bus shelter
- **Tool Station and Top-up Tap**



Actions to Date



Ongoing and Future Activities



- Updating our Place Plan based on recent studies
- Traffic calming trial around the village square
- Feasibility Study for safe walking and cycle routes to local villages – working with neighbouring communities
- Providing Ebikes for short loans (i.e. local trips)
- Discussing bus access with National Park Authority
- Pushing for Public Toilets in the Village!

20 MN in a Rural Setting



- '20 minute neighbourhood' replaced by places where people **'Live Well Locally'**
- Features of a '20 minute neighbourhood' connected by **high quality active travel or public transport** routes
- Wider collaboration on how to meet people's everyday needs equally, conveniently and sustainably
- Thank you to Forth Environment Link, Loch Lomond and the Trossachs National Park Authority and Loch Lomond and the Trossachs Countryside Trust for all their support .

Thank you

Any Questions?

Richard Boddington

secretary@drymen.org



**DISCOVER
DRYMEN**



**Forth
Environment
Link**
LINKING PEOPLE AND
THE ENVIRONMENT

