

20 Minute Neighbourhoods in National Planning Framework 4

Fiona Simpson, Chief Planner
Scottish Government



Scottish Government
Riaghaltas na h-Alba
gov.scot

Not a new concept...



But more relevant now than ever...



First commitment to 20 Minute Neighbourhoods in PfG September 2020 – responding to pandemic and climate crisis...

2020-21

radically rethink
the places we live in, our homes and our
communities.

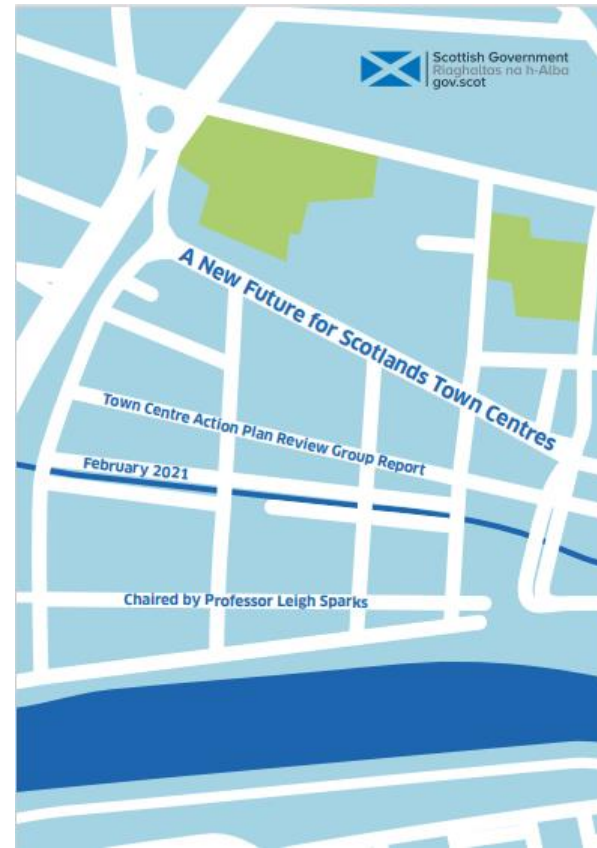
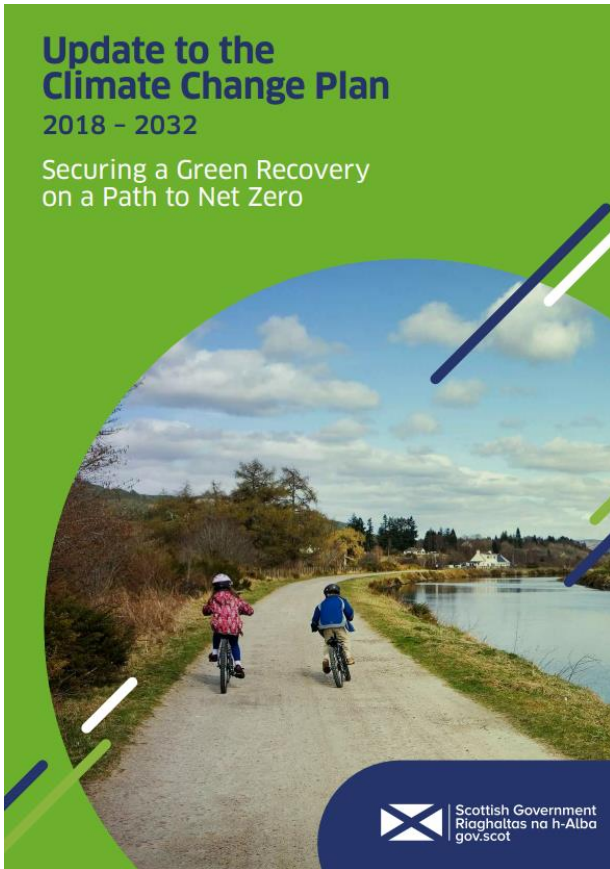
We want to ensure our communities can become vibrant
hubs for the people who live there – to work, shop,
learn,

2021-22

“Revitalise local communities through development of
20-minute neighbourhoods, investment in town centres
and a new focus on place – improving local services
and infrastructure, and aiding our ambition to ‘live
well locally’.”



Scottish Government
Riaghaltas na h-Alba
gov.scot



and increasingly supported across policies...

Draft National Planning Framework 4

- Vision for Scotland in 2045
- Spatial strategy
- National planning policies
- Part of statutory development plan
- Delivery programme

“A place based approach is at the heart of creating a more sustainable and fair Scotland. The planning system should apply the Place Principle which commits us to take a collaborative place-based approach to future development.”



National spatial strategy



Sustainable places

Net zero, nature-positive places will be more resilient to the impacts of climate change and support the recovery and restoration of our natural environment.



Liveable places

Homes and neighbourhoods will be better, healthier and more vibrant places to live.



Productive places

Will attract new investment, build business confidence, stimulate entrepreneurship and facilitate future ways of working.

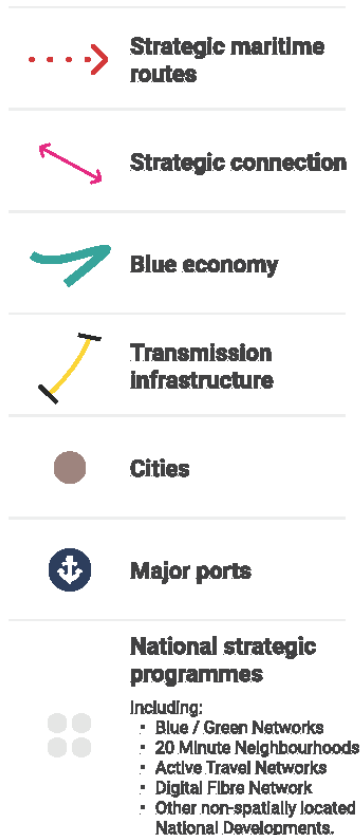


Distinctive places

Will be distinctive, safe and pleasant, easy to move around, welcoming, nature-positive and resource efficient.



Scottish Government
Riaghaltas na h-Alba
gov.scot



Principles

Compact growth

Local living

Balanced development

Conserving and recycling assets

Urban and rural synergy

Just transition



Action areas

North and west coastal innovation

Making sustainable use of our coasts and islands to sustain communities and pioneer investment in the blue economy

Northern revitalisation

Growing low carbon rural communities, capitalising on digital innovation and making the most of exceptional natural and cultural heritage

North east transition

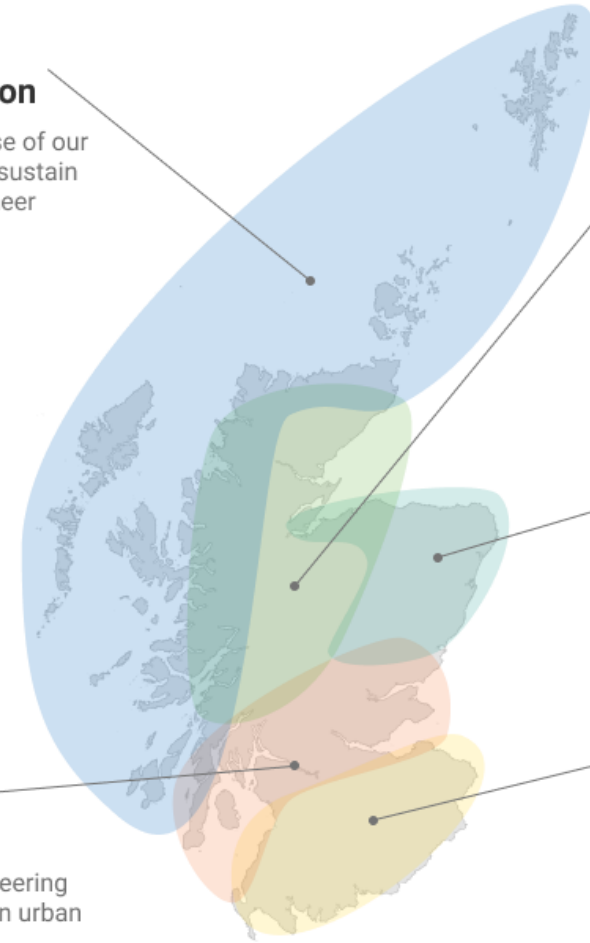
Actively planning a just transition from oil and gas to a net zero future

Central urban transformation

Transforming and pioneering a new era of low carbon urban living

Southern sustainability

Creating connected, liveable places which benefit from further investment and innovation



Scottish Government
Riaghaltas na h-Alba
gov.scot



Liveable Places

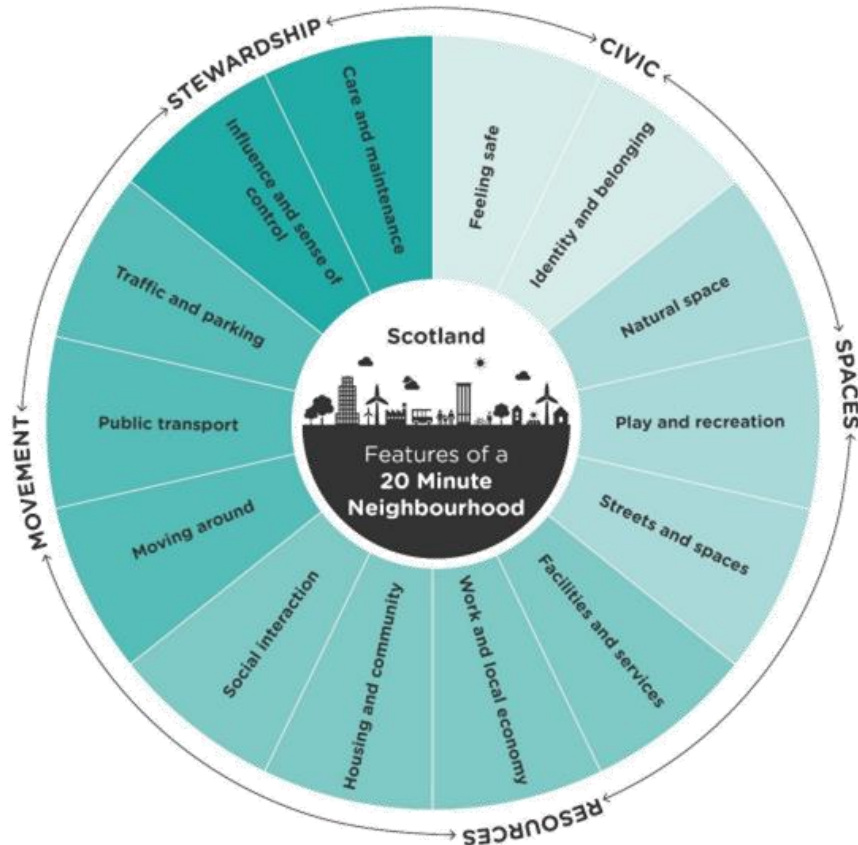
POLICY 7 LOCAL LIVING



- Development Plans **should support the principles of 20 MNs**
- Application of 20 MNs **will vary across the country** and need to adjusted to local circumstances

20 minute neighbourhoods

We want our places to support local living.



Consideration should be given to

- local public transport and safe walking, wheeling and cycling networks;
- local employment opportunities, good connections to public transport, jobs and services within the region;
- local shopping areas;
- local health and social care facilities and services;
- local childcare, schools and lifelong learning opportunities;
- local playgrounds and informal play opportunities, parks, green streets and spaces, community gardens, sport and recreation facilities;
- safe streets and spaces;
- affordable housing options, ability to age in place, housing diversity;
- the level of interconnectivity with the surrounding neighbourhood.
- Proposals should demonstrate how the development will relate to, and enhance, the local area.

National planning policies – wider context

Sustainable places

- Plan-led approach
- Climate emergency
- Nature emergency
- Public interest, human rights and equality
- Design, quality and place
- Community wealth building

Liveable places

- **20 minute neighbourhoods**
- Infrastructure first
- Quality homes
- Sustainable transport and active travel
- Heat and cooling
- Blue green infrastructure, play and sport
- Flood risk and water management
- Lifelong health, wellbeing and safety

Productive places

- Business and employment
- Sustainable tourism
- Culture and creativity
- Green energy
- Zero waste
- Sustainable aquaculture
- Minerals
- Digital infrastructure

Distinctive places

- City, town, commercial and local centres
- Urban edges and the green belt
- Vacant and derelict land and empty buildings
- Rural places
- Natural places
- Peat and carbon rich soils
- Trees, woodland and forestry
- Historic assets and places
- Coasts



Local development planning guidance

- Place based local development plans
 - Local liveability
 - Key in delivery of place-based community led regeneration
 - Understand the dynamics of your area
 - Use this to inform the spatial strategy and land allocations
 - Importance of community views / lived experiences
-
- Consultation closes 31 March 2022



Final thoughts

- Significant potential to contribute to wide range of strategic objectives
- Delivery will depend on effective, place-based collaboration
- Central / co-ordinating role for planning:
 - NPF4 – policy support and synergies
 - Local development plans – place based responses
 - Local place plans – community perspectives
- A shared concept – but application must be place based

