

Local Living and 20 Minute Neighbourhoods Draft Guidance

Ashley Mullen – Senior Architect
Planning, Architecture and Regeneration Division

Scottish Government



Scottish Government
Riaghaltas na h-Alba
gov.scot

Programme for Government Commitment



First commitment to 20 Minute Neighbourhoods in PfG September 2020 – responding to pandemic and climate crisis...

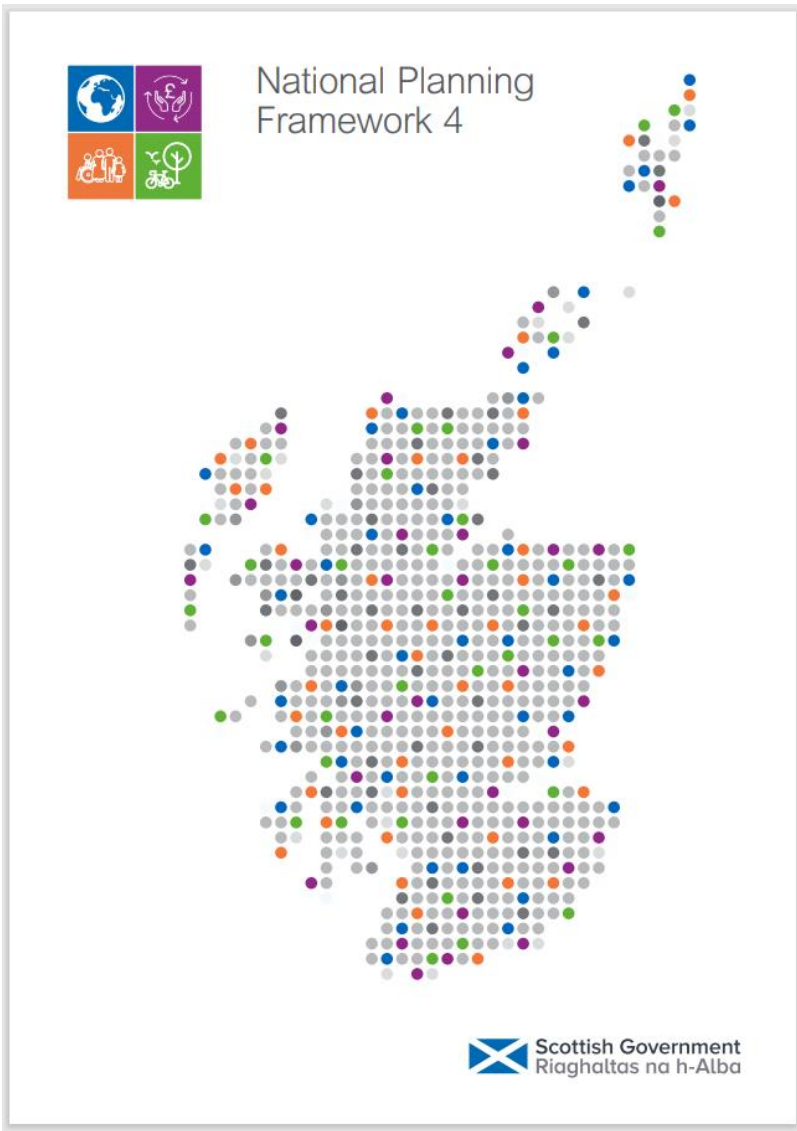
“This crisis also gives us an opportunity to radically rethink the places we live in, our homes and our communities. We want to ensure our communities can become vibrant hubs for the people who live there – to work, shop, learn, keep active, and socialise.”

“Revitalise local communities through development of 20-minute neighbourhoods, investment in town centres and a new focus on place – improving local services and infrastructure, and aiding our ambition to ‘live well locally’.”



Scottish Government
Riaghaltas na h-Alba
gov.scot

Research base and key questions



Key questions around concept

More detail required

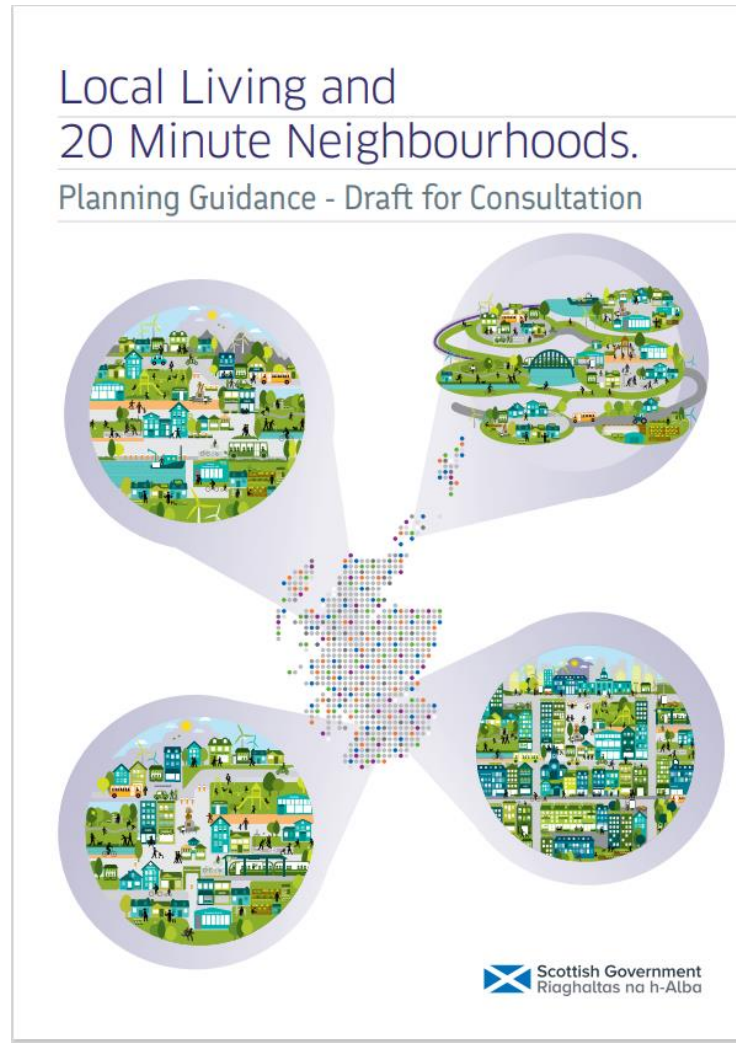
How would it be delivered?

Application in a rural setting



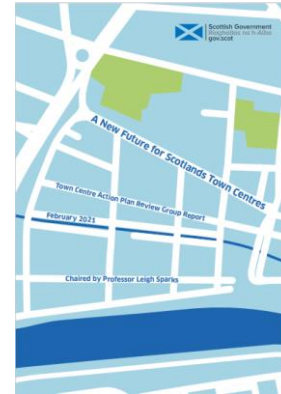
Scottish Government
Riaghaltas na h-Alba
gov.scot

Part 1: Policy and Place Context

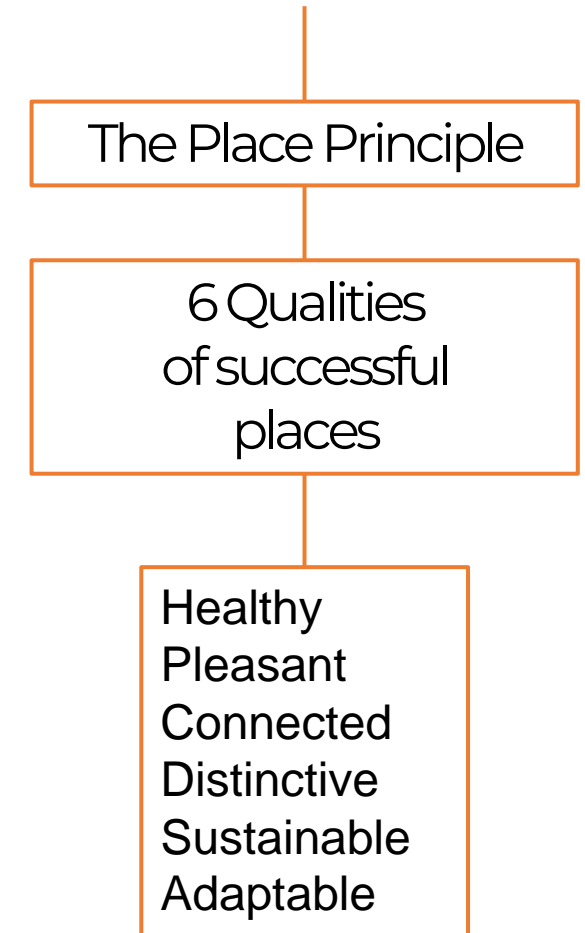


<https://consult@gov.scot>

The Policy Context



The Place Context

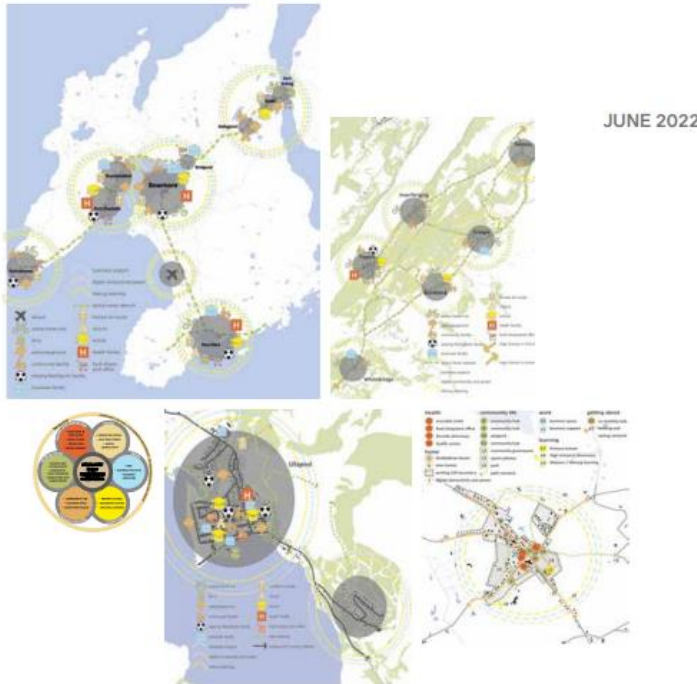


Scottish Government
Riaghaltas na h-Alba
gov.scot

Part 1: Rural and Island Context

LIVING WELL LOCALLY

20 MINUTE COMMUNITIES IN THE HIGHLANDS AND ISLANDS



Local living

Local living supports people to meet the majority of their daily needs within a reasonable distance of their home

20 minute neighbourhoods

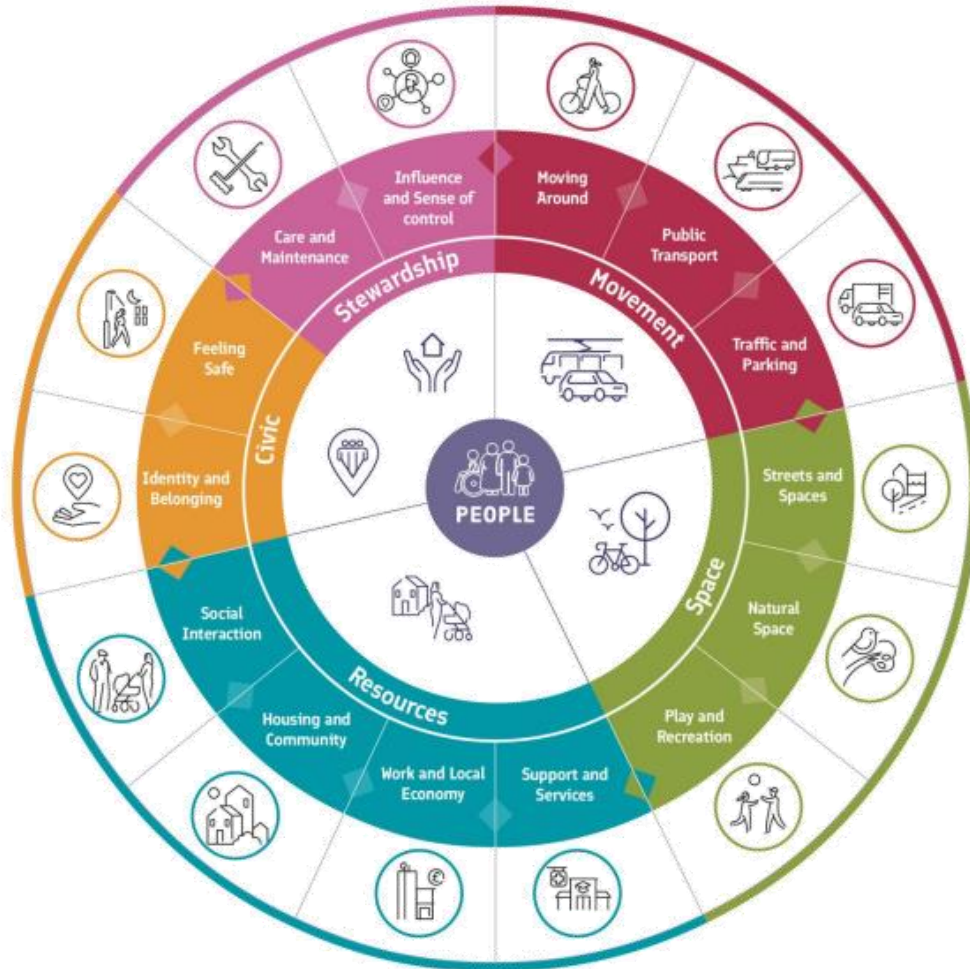
The 20 minute neighbourhood concept aims to provide access to the majority of daily needs within a 20 minute walk, wheel or cycle.



- Flexibility of approach is required across Scotland's diverse urban and rural geographies.
- Local input is of particular importance in rural places.

Part 2: What Local Living Looks Like

The Local Living Framework



Reflects existing tools and resources for good placemaking

Can be used across the varying geographies in Scotland

Promotes bespoke, place based considerations of places

Helps to structure conversations around daily needs



Scottish Government
Riaghaltas na h-Alba
gov.scot

Part 2: What Local Living Looks Like

PLACE STANDARD TOOL - DESIGN VERSION

Movement	Moving Around	Strategic cycle routes, local cycle routes, footpaths, pavements, active travel networks, connectivity, drive lines, destinations, permeability, surfaces, experience, accessibility, catering for different needs.
	Public Transport	Local, regional, interconnector, commuting, infrastructure, sustainable travel, interchange between public transport & active travel, modal shifts in transport.
	Traffic and Parking	Public realm experience, integrated, safe, controlled, vehicular speed & noise, perceptual barriers, pedestrian priority, technology, deliveries, uplift, loading, cycling, charging, types & organisation of parking.
Space	Streets and Spaces	Quality of public realm, public space, legibility, orientation, wayfinding, street hierarchies and experience, character, vibrant, usability, inclusivity, multi-functionality, street frontage, thresholds, materials, boundaries.
	Natural Space	Parks & open space, natural landscapes, visual connection, existing features or landmarks, access & connectivity, climate resilience, ecosystems, blue & green infrastructure, biodiversity, growing, productive spaces, educational benefits.
	Play and Recreation	Variety & quality of play & recreation provision across age groups, care & maintenance, site features, indoor & outdoor sport, health & fitness, seating, social.
Resources	Facilities and Services	Education, health facilities, social care, lifetime support, access & connectivity, mixed use, range & variety, associations, quality of services, sustainable provision, adaptation, healthy food, utilities, communications, repair, waste & recycling.
	Work and Economy	Active local economy, quality of employment, training opportunities, work spaces, working from home, access to education, community enterprise, third sector, entrepreneurship, wider impact, local businesses.
	Housing and Community	Relationship with local area, range of tenures, types & sizes, adaptability, social integration, shared resources, ongoing management, community assets, provision of communal facilities, energy & sustainability.
	Social Interactions	Social spaces (indoor & outdoor), local groups & organisations, public spaces, informal social spaces, communal activities, welcoming spaces, tackling inequalities, cohesion.
Civic	Identity and Belonging	Culture, heritage, topography, landscapes, landmarks, gateways, design codes, local architectural styles / distinctiveness, perception, legibility, encouraging diversity, sharing networks.
	Feeling Safe	Passive surveillance, reactivation of derelict spaces, weather, climate emergency, routes & access, boundaries, play, connections, trust, care.
Stewardship	Care and Maintenance	Rights & responsibilities, public & private, housing management, climate emergency, weather events, long-term occupation, operational costs, procurement, longevity, fitness for purpose, communication, everyday care.
	Influence and Control	Consultation, self-initiation, long-term management, community ownership, community capacity building, evaluation & ongoing improvement.

The Place Standard Design Version

Movement

Place Standard tool

Key considerations for local living

Spaces

Place Standard tool theme

Key considerations for local living

Resources

Place Standard tool theme

Key considerations for local living

Civic

Place Standard tool theme

Key considerations for local living

Stewardship

Place Standard tool theme

Key considerations for local living

		Care & Maintenance	Rights & responsibilities, public & private, housing management, climate emergency, weather events, long-term occupation, operational costs, procurement, longevity, fitness for purpose, communication, everyday care.
		Influence and Sense of control	Consultation, self-initiation, long-term management, community ownership, community capacity building, evaluation & ongoing improvement.

Public space, legibility, street hierarchies and permeability, street frontage, doorways.

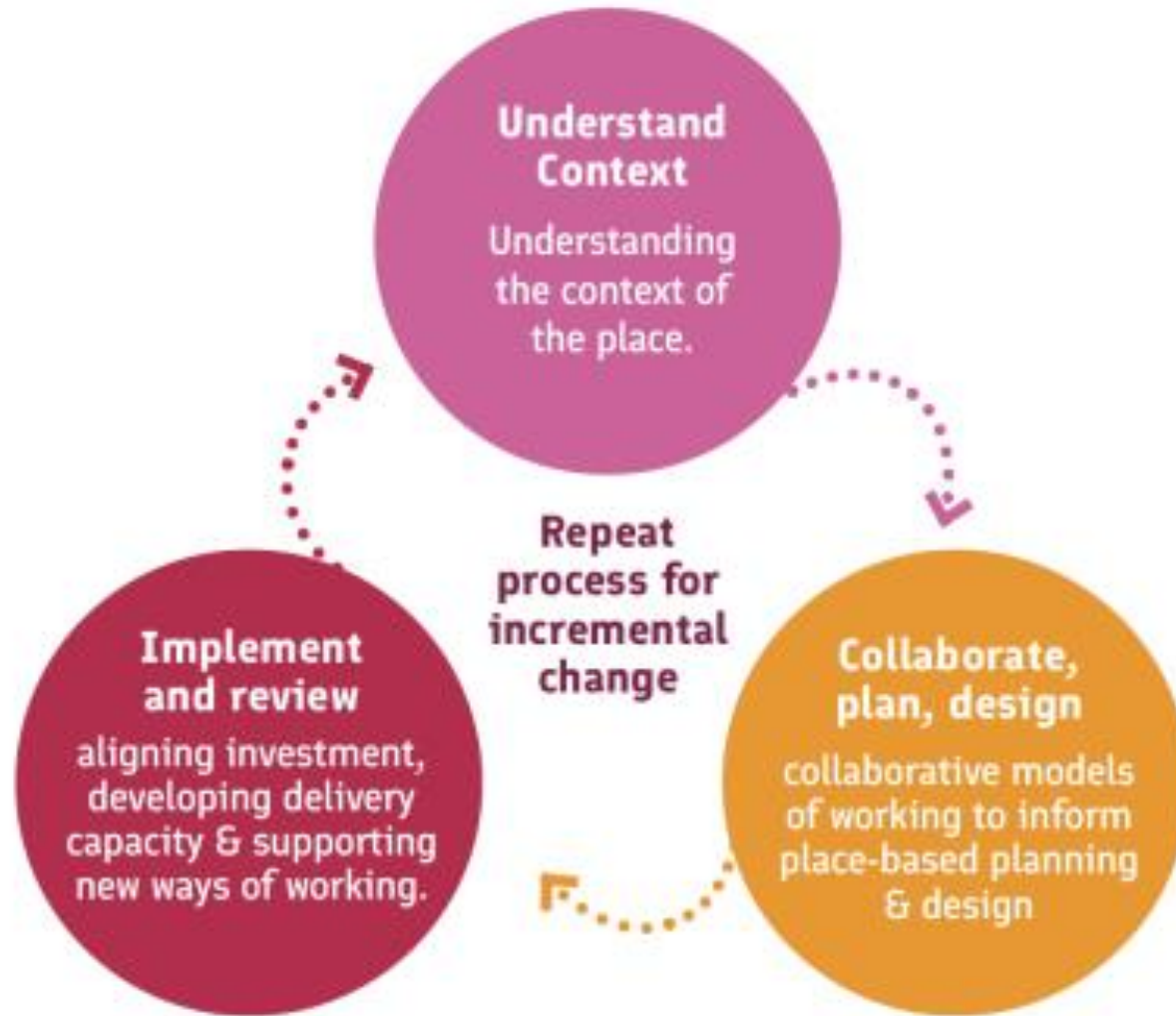
Visual landscape, visual quality, resilience, infrastructure, active spaces,

Recreation provision, maintenance, site support, health & safety.

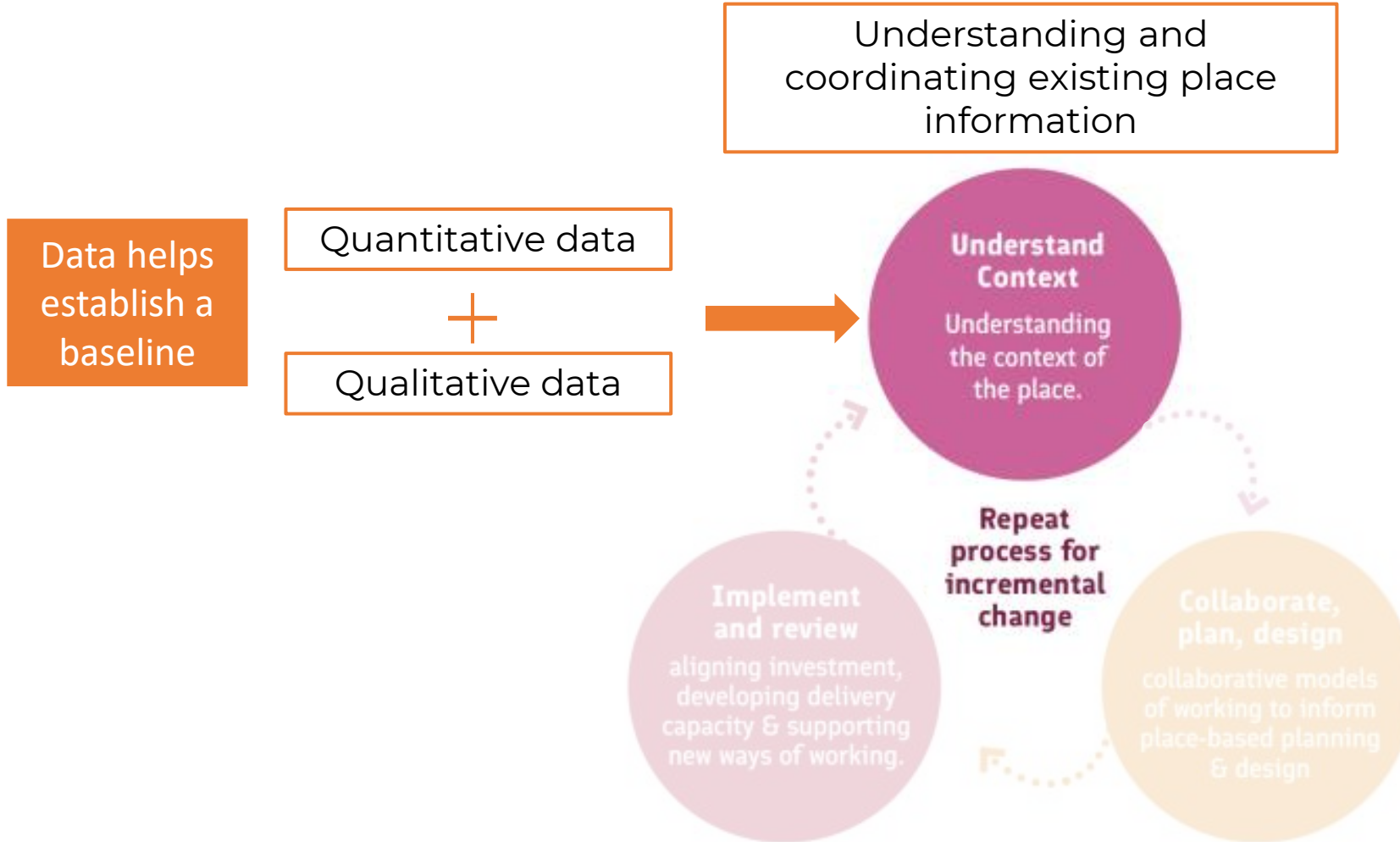
The Key considerations for local living



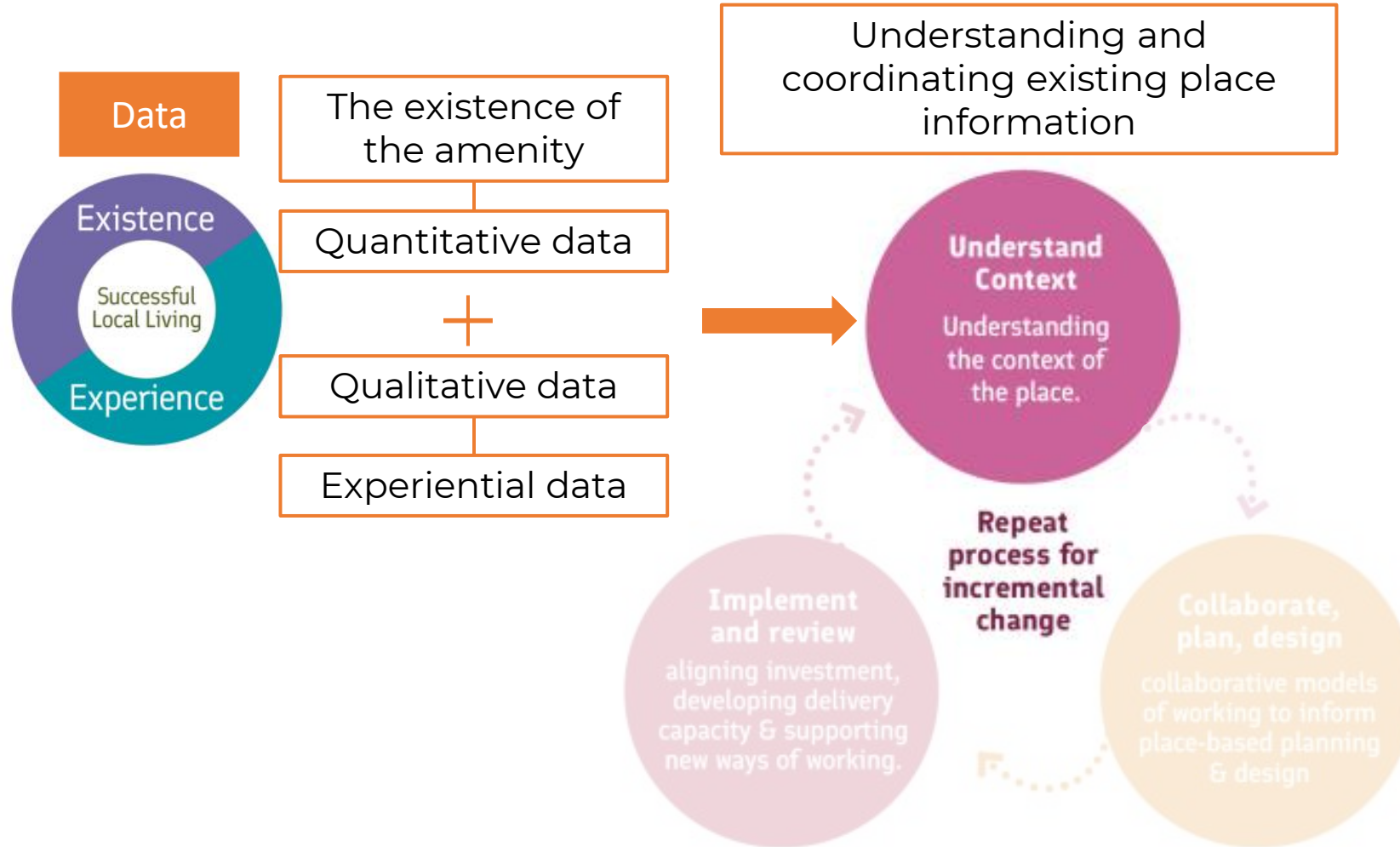
Part 3: Structuring the approach



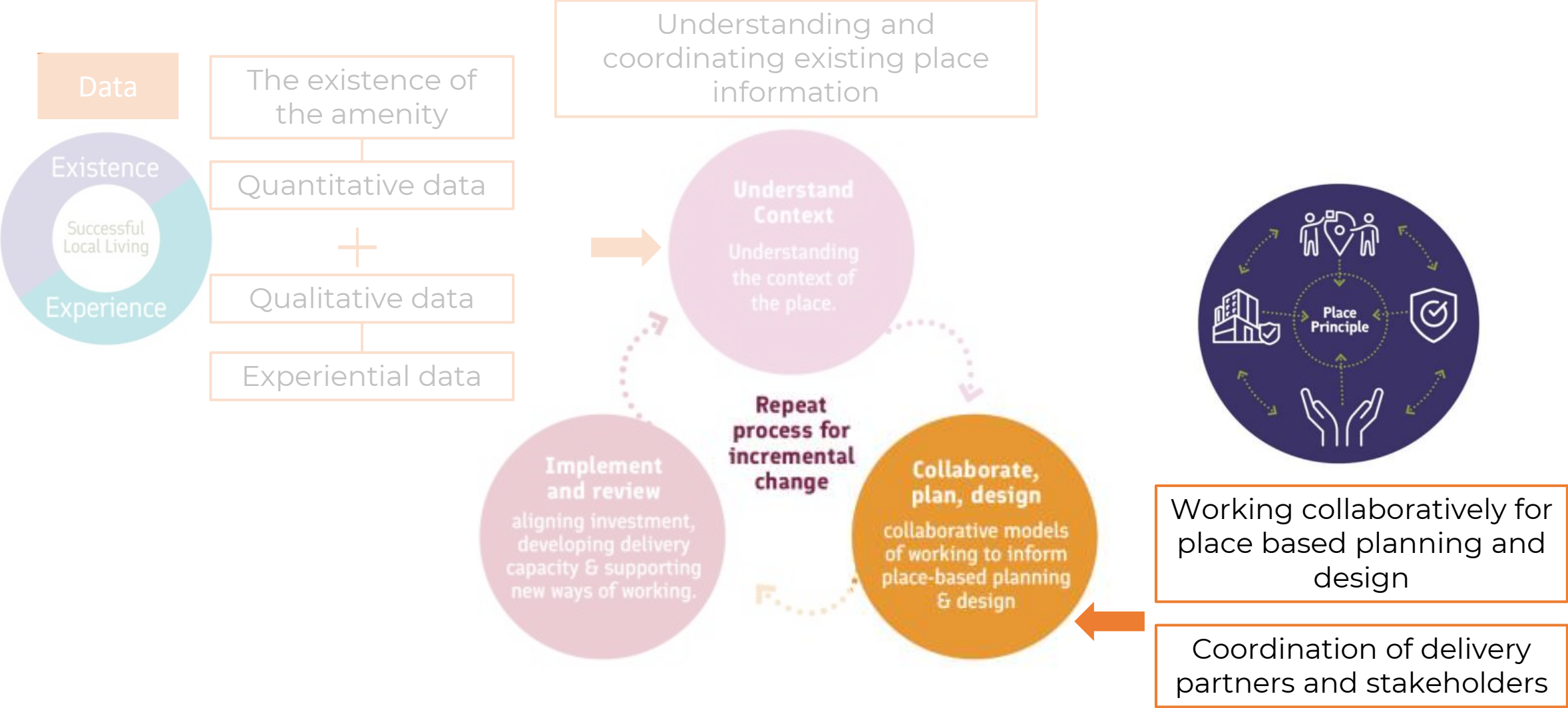
Part 3: Structuring the approach – Understanding the context



Part 3: Structuring the approach – Understanding the context

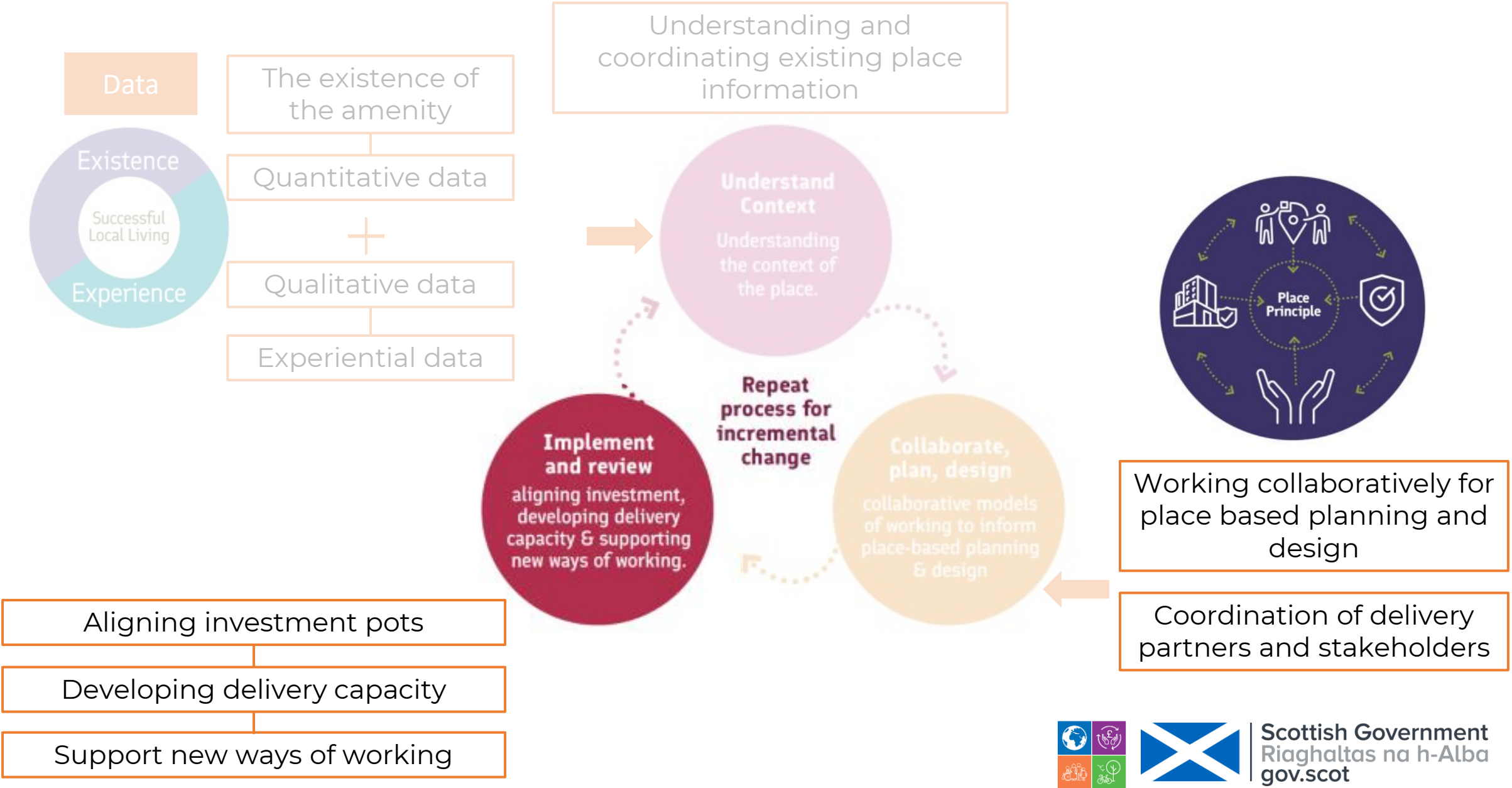


Part 3: Structuring the approach – collaborate, plan and design

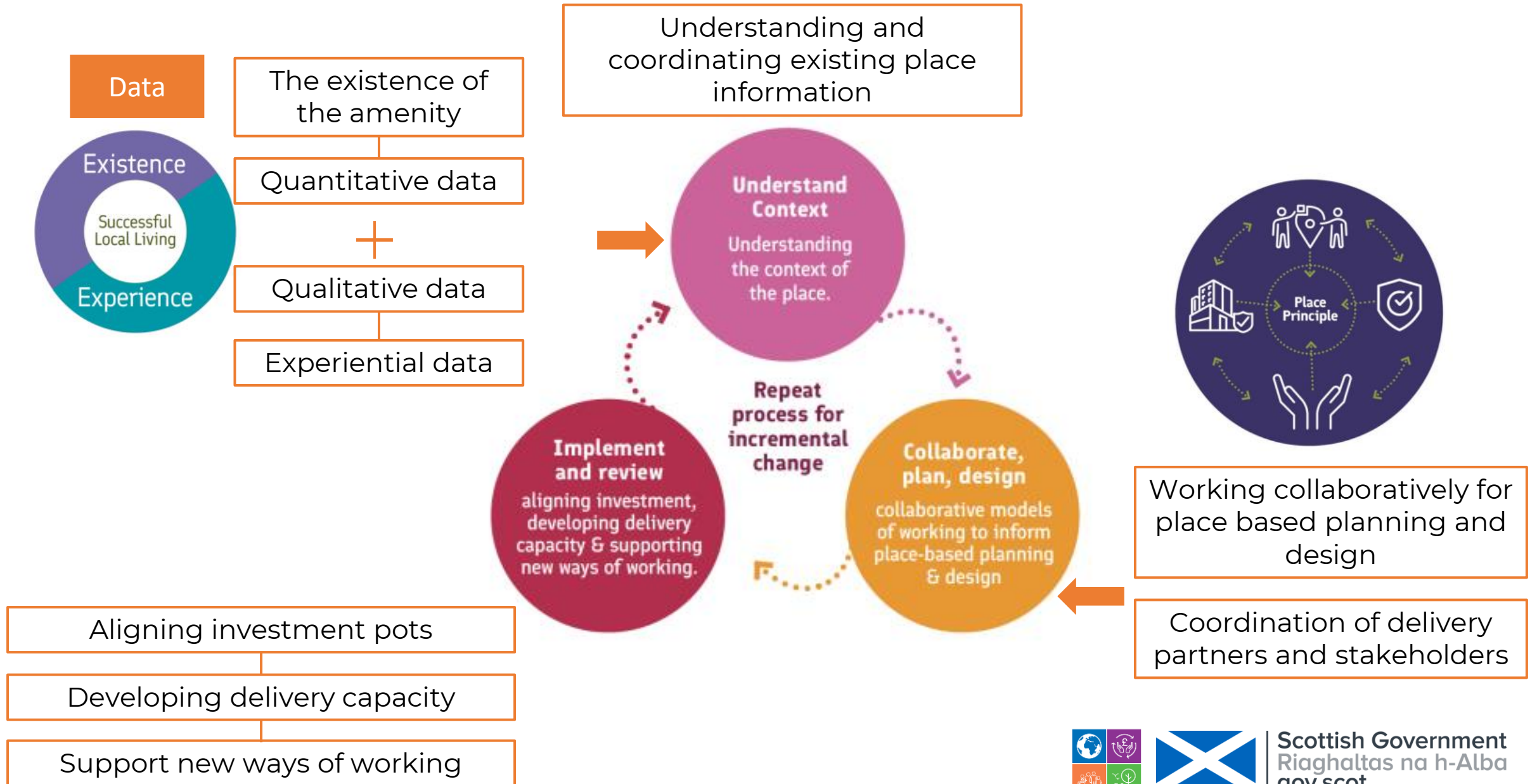


Scottish Government
Riaghaltas na h-Alba
gov.scot

Part 3: Structuring the approach – implement and review



Part 3: Structuring the approach – repeat for incremental change



Local Living and 20 Minute Neighbourhoods



“A place based approach is at the heart of creating a more sustainable and fair Scotland. The planning system should apply the Place Principle which commits us to take a collaborative place-based approach to future development.” NPF4



Scottish Government
Riaghaltas na h-Alba
gov.scot

Thanks for listening...



Scottish Government
Riaghaltas na h-Alba
gov.scot