

# Place Standard SURF People in Place Network Meeting

30 Nov 2023



1

## Introduction and welcome



2

# The Programme

## Agenda

10:00	Registration and Networking
10:30	Welcome - Euan Leitch, SURF
10:40	Place Standard Tool background and updates – Public Health Scotland
10:55	<b>Comfort break (10 mins)</b>
11:05	Round table discussions
12:00	End reflections
12:10	Summing up and further sessions
12:25	What's next - Euan Leitch, SURF
12:30	<b>Close and lunch</b>

3

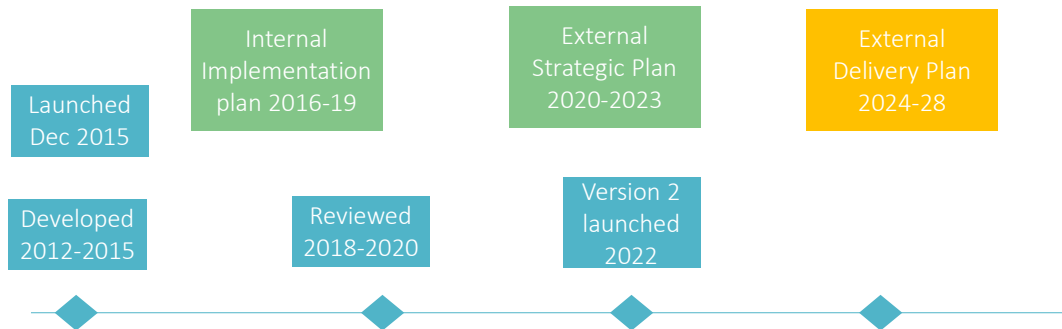
## Place Standard Tool background and updates

4



## Brought to life through the Place Standard

# Place Standard Tool partnership



All developed and implemented through partnership



7

## Place Principle

The Place Standard Tool is a key enabler to place based working and thus to applying the Place Principle.

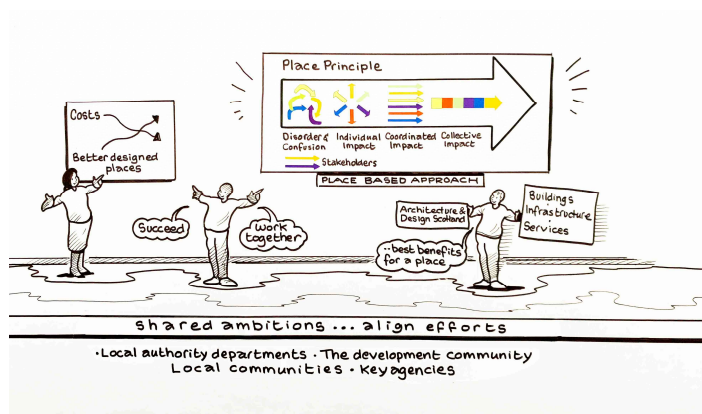


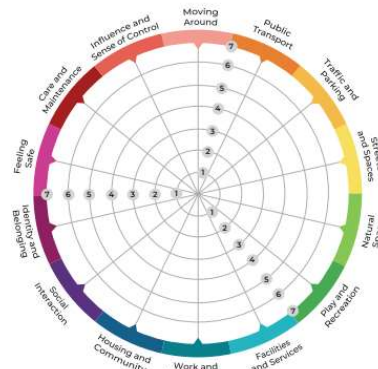
Image source: Architecture and Design Scotland

8

## A closer look at the Place Standard Tool

14 themes cover a broad range of both physical (such as streets and spaces) and social (such as feeling safe) characteristics that make up a good place.

A healthy place needs to have *elements* of all the themes.



9

## Place Standard Tool

Define → Walk → Look → Talk → Talk + Score → Propose Change

- The Place Standard Tool provides a structure for a **conversation** about a place between communities and key stakeholders
- Enables you to structure conversations around the many physical and social aspects that come together to make a place.
- Brings communities, the public sector, private sector and third sector together to deliver high quality places.
- Help you to identify the strengths of your area and priorities for improvement.
- Opportunity to work together to improve the quality of places across Scotland.



10

## People and lived experience at the centre

Where we live, work and play have an impact on our health, our wellbeing, the planet

**Key to the future of a place is shaping places with the people and communities that will use them**

Place Principle asks that all those responsible for designing, maintaining, and improving places to work with local communities to improve the lives of people support inclusive and sustainable economic growth create more successful places

**Local people are the experts**



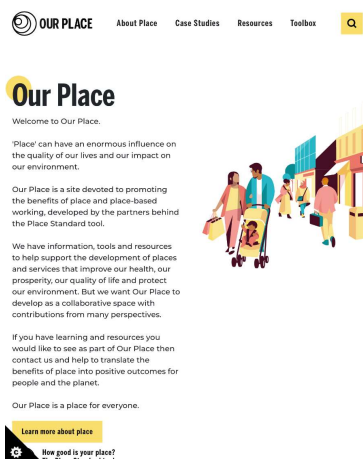
11

# Place Standard Tool

Range of resources

12

# All in the one place .. “Our Place”



[www.ourplace.scot](http://www.ourplace.scot)

13

## Place Standard Learning Resource

[www.ourplace.scot/place-standard-learning-resource](http://www.ourplace.scot/place-standard-learning-resource)

- To enable users through the use of tools and templates to understand and practically apply the Place Standard Tool.
- Primarily been designed with community and third sector groups and organisations in mind
- Useful for any individual or group looking to benefit from using the Place Standard tool to understand their place



14

# Flexible resources to help frame your Place Standard conversations



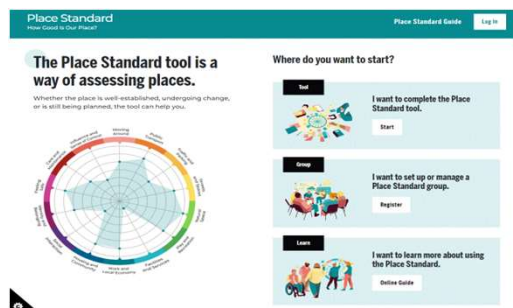
Main tool? Online, in person? With a climate lens? With an air quality lens?

[www.ourplace.scot/About-Place-Standard](http://www.ourplace.scot/About-Place-Standard) [www.ourplace.scot/tool/place-standard-guide](http://www.ourplace.scot/tool/place-standard-guide)

15

## Online version of the tool

[www.ourplace.scot/tool](http://www.ourplace.scot/tool)



### Results

Compare results, see individual results, manually add results, and download results as a CSVs or in charts.

[Go to results](#)

### Customise Assessment

Add custom words throughout the assessment.

[Go to customise](#)

16



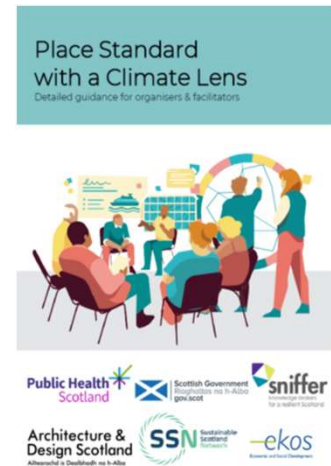
## Place Standard with a Climate Lens

Aim: to support place-based climate conversations including adaptation & mitigation

Provides step-by-step support on how to develop productive conversations focused on the important relationship between climate and place

**Not a different tool, it's a way of framing Place Standard conversations**

Includes guidance and a suite of tools, including a climate change prompt document for facilitators, a glossary of terms, support videos



[www.ourplace.scot/Place-Standard-Climate](http://www.ourplace.scot/Place-Standard-Climate)

17

## Place Standard with an Air Quality Lens



Supplement to core Place Standard tool to help encourage discussions on air quality

A framework to structure a conversation between everyone involved in improving air quality.

Additional prompts which can be used in areas if you want to know how local people feel about air quality and their ideas to improve air quality

E.g.

*What do you think the air quality is like in your area?*

*What action can be taken to reduce emissions and improve street ventilation to make streets more pleasant and attractive for people to use?*

18

# Inclusive community engagement

Consider your key audiences and opportunities for community-led engagement. Remember the [Scottish National Standards of Community Engagement](#) as a central benchmark and reference point for best practice

## [Place Standard Inclusive Communications Toolkit](#)

You can use the Toolkit alongside the information and guidance for any version of the Place Standard you are using. The toolkit will help you set up an event in an inclusive way, which will help include more citizens in the conversation.



19

# Inclusive community engagement

## [Place Standard Tool for Children and Young People](#)

These versions are based on the core Place Standard tool but the theme names, questions and prompts have been adapted to be more accessible and appropriate for younger users.

## [Translations](#)

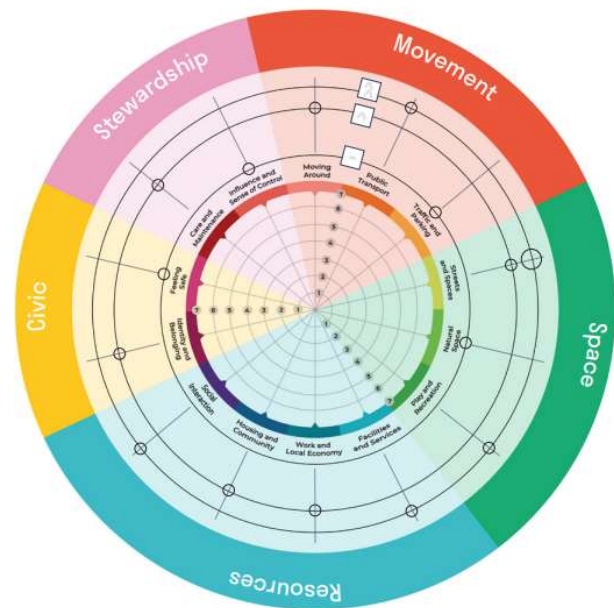
Arabic, Chinese and Polish



20

## Design Version

- A complementary addition to the original, core tool. It provides a method through which the Place Standard can directly inform the design
- To support the development planning, development management and design processes, and considerations within the framework of the 14 Place Standard themes.
- Groups 14 PST Themes into Five Categories: Movement, Space, Resources, Civic, Stewardship
- Asks structured questions about a development or design proposal under these headings
- [Local Living and 20 Minute Neighbourhoods. Planning Guidance – Draft](#)



21

## National support to deliver Place Standard

- The National Place Standard Team includes staff from Scottish Government, Public Health Scotland, Architecture & Design Scotland, Glasgow City Council, and the Improvement Service
- National contacts work with **Place Standard leads** and wider stakeholders to promote, enable and embed the use of the Place Standard Tool
- 1:1 support / a dedicated named contact for Place Standard Leads
- Bespoke training opportunities – Workshop Feb 24, please let us know if interested
- [Place and Wellbeing Alliance](#) to share resources, ideas and lessons learned

22

# Policies that tie up Place Based Working

Use of the Place Standard supports implementation of national policies. Capture information

## National Planning Framework 4: Delivery Programme v2: September 2023

- *The Place Standard is a key tool for supporting collaborative place-based working and implementation of the Place Principle*

## National Planning Framework 4

- *Planning authorities should use the Place Standard tool in the preparation of LDPs and design guidance to engage with communities and other stakeholders. They should also where relevant promote its use in early design discussions on planning applications.*
- *Emphasis on working together in the coming years to improve people's lives by making **sustainable**, **liveable** and **productive** places*



23

# Policies that tie up Place Based Working

NPF4 themes, **sustainable, liveable and productive places**, linked to Scottish Government National Performance Framework and United Nations Sustainable Development Goals and

- *The National Performance Framework is Scotland's wellbeing framework. **Emphasises the importance of listening to and understanding peoples' stories of real life experiences***
- *United Nations (UN) Sustainable Development Goals to **promote prosperity while protecting the planet***



24

# Policies that tie up Place Based Working

## Local Development Plan Guidance

*Planning authorities should use the Place Standard tool in the preparation of Local Development Plans and design guidance to engage with communities and other stakeholders. They should also where relevant promote its use in early design discussions on planning applications.*

## Local Living and 20 Minute Neighbourhoods. Planning Guidance – Draft

A Local Living Framework, 14 key themes, derived from the Place Standard tool

## Local Place Plans

Community led local place planning. Right for communities to produce their own plans as part of the Scottish planning system.

25



26

## Supporting Play : Involving Children and Young People

Scotland's National Planning Context



**Etive Currie,**  
**Spatial Planning Place Lead – Research + Development**  
Neighbourhoods, Regeneration + Sustainability  
Glasgow City Council

27

## National Planning Framework 4

**National Spatial strategy** supports the delivery of:

- Sustainable places
- **Liveable places**, where we can all live better healthier lives
- Productive places

**National Planning Policy:**

### **POLICY 21 PLAY, RECREATION AND SPORT**

Policy Intent:

To encourage, promote and facilitate spaces and opportunities for play, recreation and sport.

Policy Outcomes:

- Natural and built environments are improved, with more equitable access to opportunities for play and recreation.
- Physical and mental health are improved through provision of, and access to, outdoor recreation, play and sport facilities.



28



**Policy Intent:  
OUTDOOR PLAY OPPORTUNITIES**

PLAY IN  
NATURE



PLAY  
PARKS



PLAY  
EVERYWHERE



PLAY ON THE WAY

PLAY IN THE  
COMMUNITY /  
NEIGHBOURHOOD

DOOR-STEP PLAY

29

## Planning (Scotland) Act 2019

### The Town and Country Planning (Play Sufficiency Assessment) (Scotland) Regulations 2023

- o came into force on 19 May 2023
- o planning authorities to assess the sufficiency of play opportunities for children when preparing an evidence report to inform the making of local development plan

Planning authorities must:

- identify and map formal play spaces
- assess and provide statements as regards the overall (a) quality, (b) quantity, and (c) accessibility of formal and informal play spaces
- consult children, their parents and carers during the assessment
- publish



30



## PLAY FOR ALL

- All Ages (0-17)
- Spaces for Girls and Boys
- Children with disability and other protected characteristics
- Deprived communities



31

## Planning (Scotland) Act 2019

Effective Community Engagement:  
engaging children and young people

- Collaboration rather than conflict – inclusion and empowerment
- Introducing Local Place Plans
- Requiring consultation and participation as part of making local development plans



32



## Embedding the Place Standard Tool in Scottish Spatial Planning Policy

### place standard tool

*How Good is Our Place?*

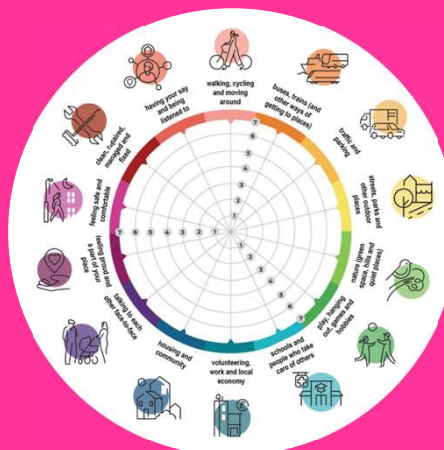
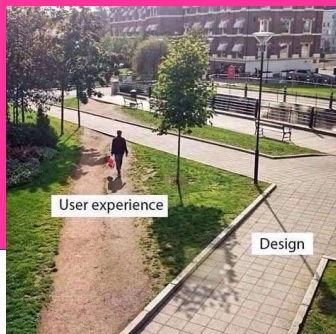
New suite of resources



Place Standard Tool – How Good is Our Place?

33

Are we having the right conversations with the right people at the right time to change things for the better?



34



Changing mindsets +  
Thinking differently



Place Standard Tool

35



Collaborate – co-design-deliver places where children and young people can have fun.....



Place Standard Tool

36




## Play Sufficiency Assessments ---PSA

Types of Play	Ways to Play		0 - 4	5 - 11	12 - 15	16 - 17
	Be Active	Running, Chasing, Skipping, Hopping and Jumping	✓	✓	✓	✓
		Swinging	✓	✓	✓	✓
		Sliding	✓	✓		
		Spinning and Rocking	✓			
		Ball Games like Basketball, Tennis, Football, or Rounders, etc.	✓	✓	✓	✓
	Be Adventurous / Daring	Balancing or Crawling	✓			
		Hanging upside down, Jumping from High Up, Swing High, Walk on Logs, wobbly surfaces, etc.	✓	✓	✓	✓
		Bike or Scooter Riding	✓	✓	✓	✓
		Roller Skating and/or skateboarding		✓	✓	✓
		Climbing	✓	✓	✓	✓

Place Standard Tool

37

## Play Sufficiency Assessments ---PSA

Types of Play	Ways to Play		0 - 4	5 - 11	12 - 15	16 - 17
	Make Things	Sand or Soil for Digging in or Making Things	✓	✓		
		Building Dens or Other Structures		✓		
		Water for Pouring, Measuring or Splashing	✓			
	Be Creative	Things or Places for Pretend Play	✓			
		A Place to Perform, Sing or Act		✓	✓	✓
		Chalking, Drawing or Painting	✓	✓	✓	✓
Types of Play	Ways to Play		0 - 4	5 - 11	12 - 15	16 - 17
	Hang Out:	Quiet Places to be on your own or with a Few Close Friends		✓	✓	✓
		Places to Socialise and Meet Friends (other boys and girls of different ages and abilities), Sit around and Chat, Laugh, Shout (generally hang out)	✓	✓	✓	✓
	Characteristics of Play Opportunities	The Play Place is Easy to get to by Walking or Cycling		✓	✓	✓
		The Play Place Feels Safe from Traffic, Bullies or Strange Adults		✓	✓	✓
		The Play Place has Natural Things to Play on or with e.g. Trees, Logs, Rocks, etc.	✓	✓	✓	✓
		There is Fixed Equipment to Play On	✓	✓	✓	✓

Place Standard Tool

38

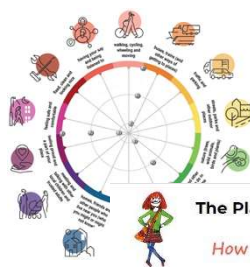
# INCLUDING YOUNG PEOPLE'S VOICES

CENTRE  
FOR  
CIVIC  
INNOVATION

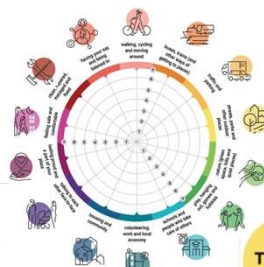


Place Standard Tool

39



**The Place Standard tool**  
A Version for Children  
*How good is my place?*



**The Place Standard tool**  
A Version for Young People  
Draft Revision  
April 2022



[www.ourplace.scot](http://www.ourplace.scot)

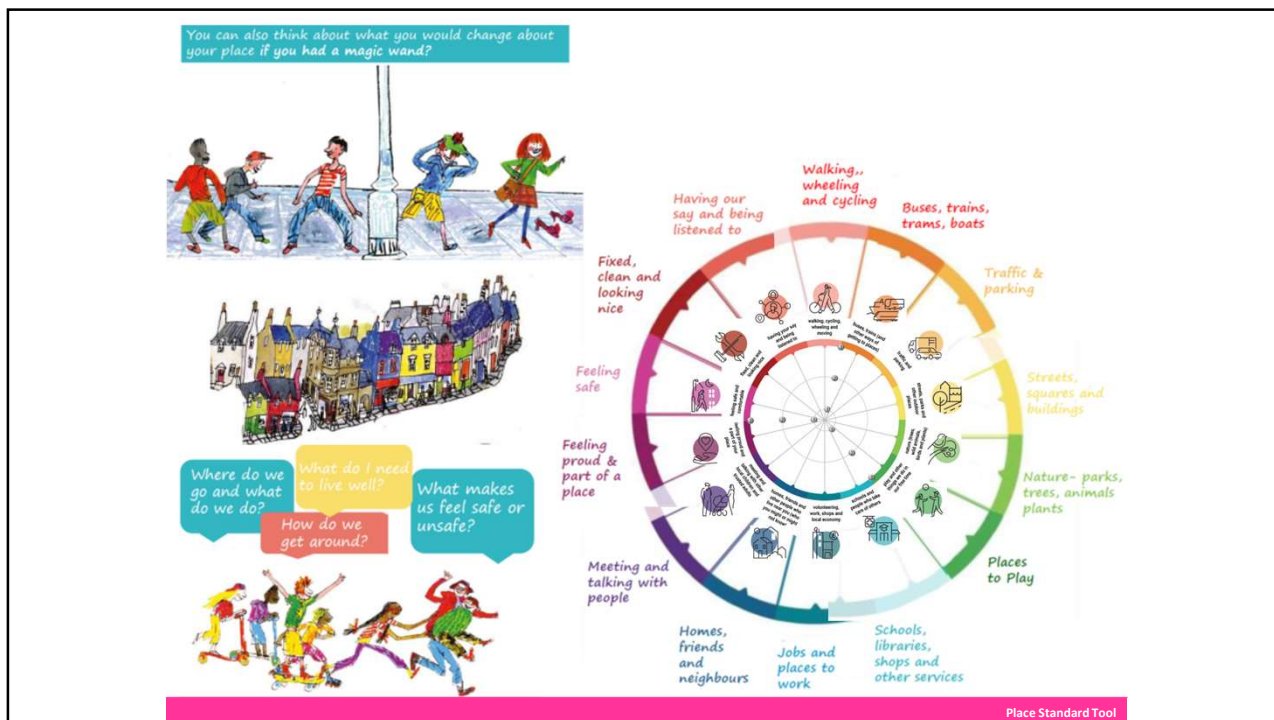


**The Place Standard tool**  
A Version for Young People

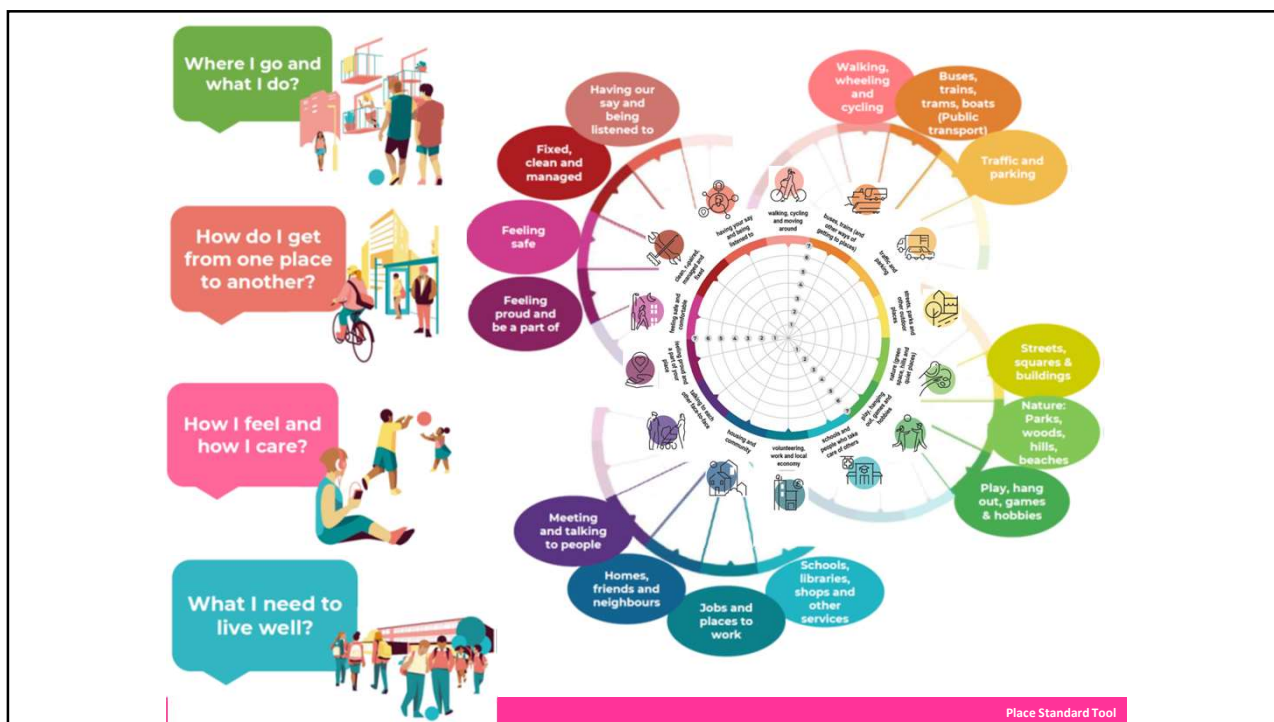
Place Standard Tool

40





41



42

## Co-Designing Places with Children and young people

Places and Spaces where children and young people want to spend time



Place Standard Tool

43

## Co-Designing Places With Young people for Young People.....



Place Standard Tool

44

Break

45

Round table discussions

46

## Place Standard Tool vision

**Vision** “A Scotland where collaborative, place-based working tackles disadvantage, supports improved wellbeing, and protects the environment with all members of society involved and empowered in decision-making for their local areas.”

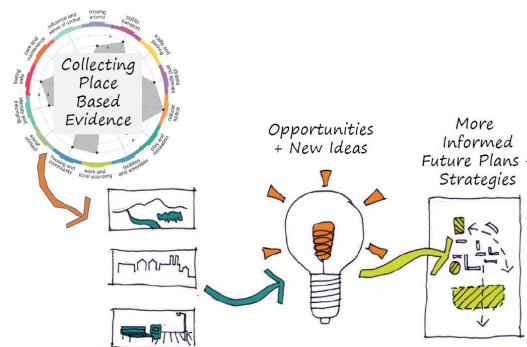
**Purpose:** ... to support the delivery of **high-quality** places in Scotland and to maximise the potential of the physical and social environment in supporting health, wellbeing and a high quality of life

**Practical action.** What is needs to happen 2024-2028?

47

## Place Standard as a catalyst for improvements and solutions

How can we further the contribution of the Place Standard Tool to improving outcomes for communities and protecting our environment?



48



## Round table discussions



### Delivery plan for the Place Standard Programme 2024-2028

1. Maximising use of main tool and supporting lenses - Michelle
2. How to embed the Design Version of the tool? - Etive
3. Collaborative working and sharing of resources - Derek
4. Workforce and leadership support - Frances
5. Community engagement and community led opportunities - Claire
6. Role of PST in delivery of national policies – Euan

49

# Next steps

50

## Next steps

- Engagement ongoing, topic-led events
- Place Standard Implementation Group
- Delivery Plan drafting & consultation to March 2024
- Target Publication – Apr-May 2024

51

## Next steps

### **Please keep in touch**

- We would welcome the opportunity to come and promote this work and talk to you in more detail about it
- Support and collaborative opportunities. Reflecting on what you have heard today, what would you like to learn more about to help you in your role?
- What are the key opportunities to connect and strengthen the PST priorities with your work/priorities
- Feedback on today's session

52

# Thank you

[claire.finlayson@phs.scot](mailto:claire.finlayson@phs.scot) & [frances.birch@phs.scot](mailto:frances.birch@phs.scot)  
Place Team – Localised Working Programme  
Public Health Scotland