

What is Green Infrastructure?

**NATURE AND CLIMATE
FOCCUSED**

Green infrastructure or blue-green infrastructure refers to a network that provides the “ingredients” **for solving urban and climatic challenges by building with nature**

The main components of this approach include

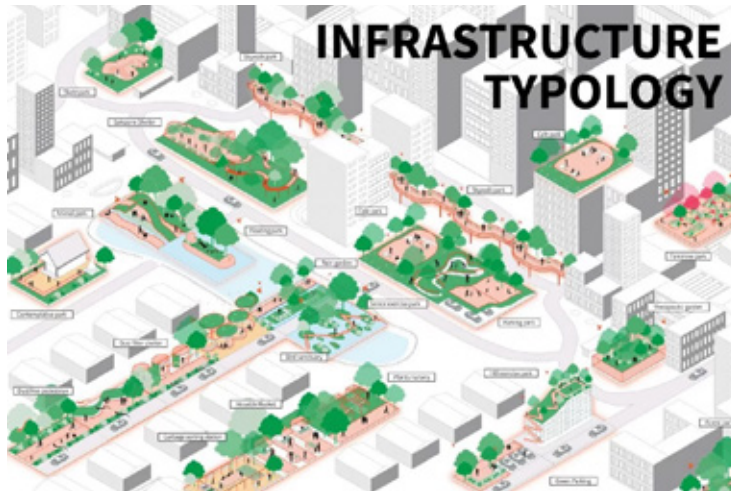
- Stormwater management
- Climate adaptation,
- Reduction of heat stress,
- Increasing biodiversity
- Food production
- Better air quality
- Sustainable energy production
- Clean water, and
- Healthy soils, as well as more

>> CONNECTING CORRIDORS

>>> INCREASED QUALITY OF LIVE THROUGH CLOSE-BY RECREATION

>>> INCREASED PHYSICAL ACTIVITY through better food, cleaner air, active travel, play opportunities close by

>>> IMPROVED MENTAL HEALTH through exposure to green and nature



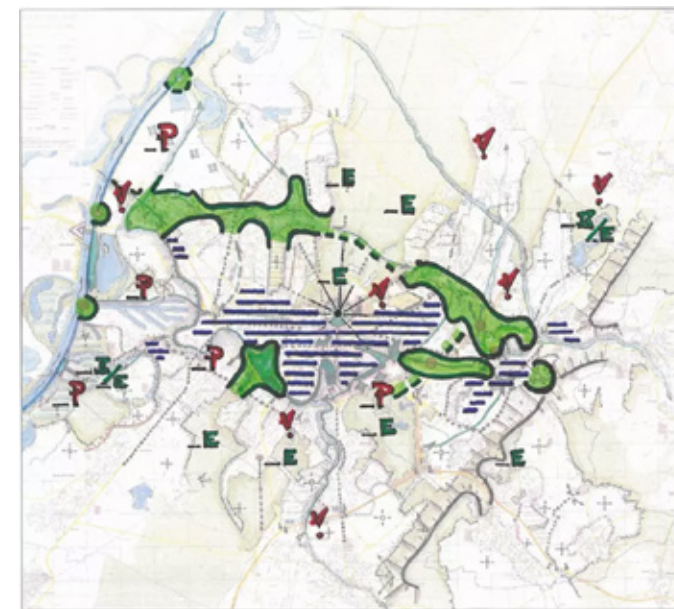
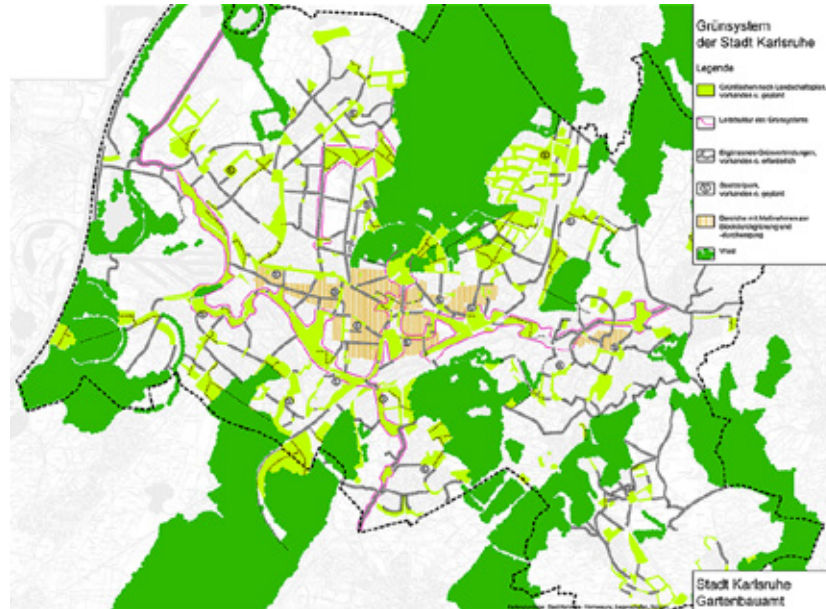
PEOPLE
FOCUSED

Green infrastructure is a network of **multi-functional green space** and other green features, urban and rural, which can deliver quality of life and environmental benefits for communities.

It includes parks, open spaces, playing fields, woodlands – and also street trees, allotments, private gardens, green roofs and walls, sustainable drainage systems (SuDS) and soils. It includes rivers, streams, canals and other water bodies, sometimes called ‘blue infrastructure’.



CONNECTING THE DOTS WITHIN THE CITY



AND ACROSS THE COUNTRY



LOCAL OPPORTUNITIES



**Project 01:
Lyneburn Corridor
Dunfermline**

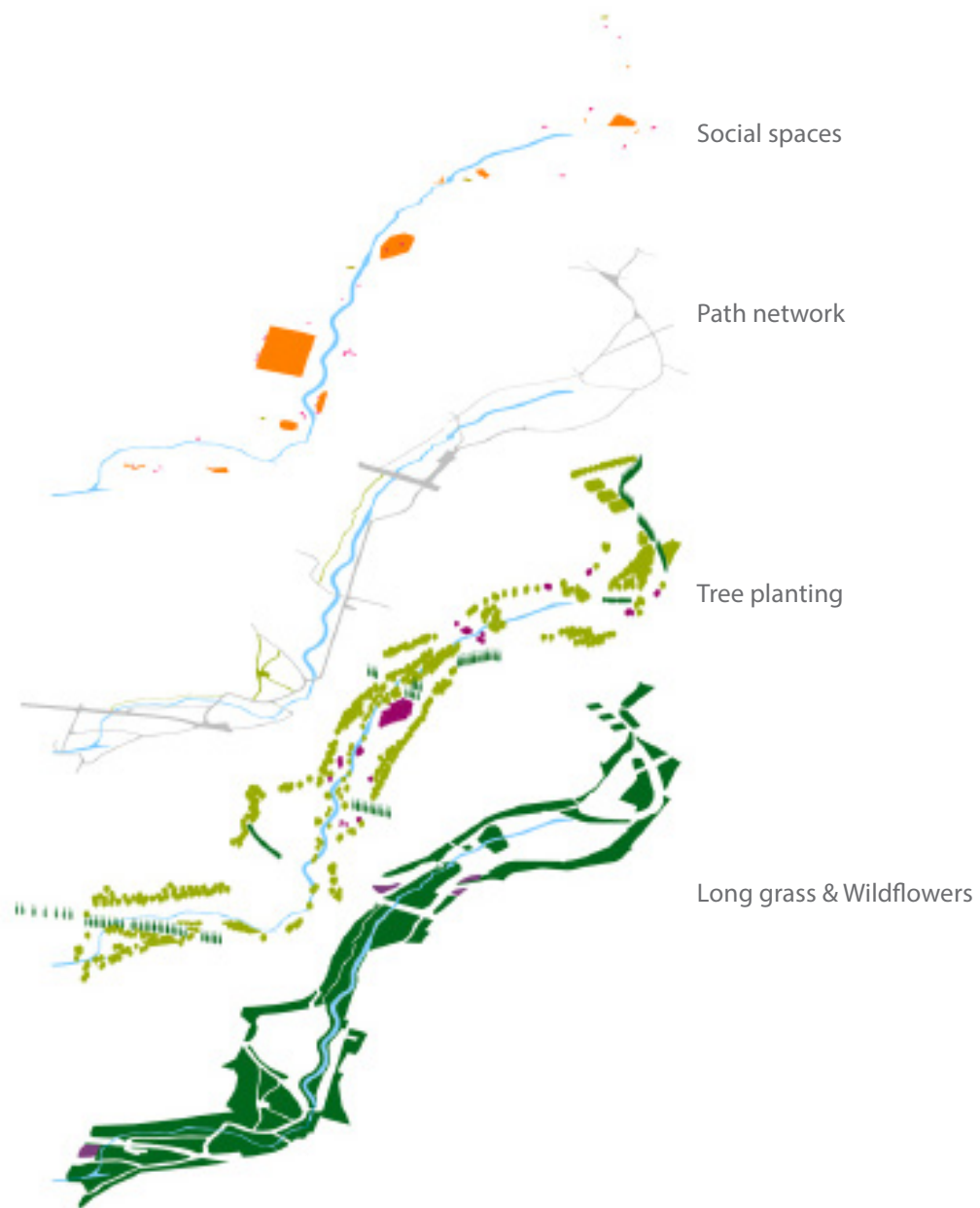


Client:
Fife Council

Collaboration with:
Fife Coast and Countryside Trust
Touch Community Garden

Masterplan Completed
Oct '16

Construction Completed
Autumn '23



















Thank you for your support

To help your tree during you care:
- Water during dry weather
- Remove any leaf fall
- Report any vandalism
- Contact details of Soilcare

Tree Adoption Certificate

Tree Adoption Certificate



- To help your tree during you care:
- Water during dry weather
 - Remove any leaf fall
 - Report any vandalism (contact details of Soilcare)
- Please refrain from:
- Cutting any branches
 - Attaching any labels, plaques or signs

Thank you for your support

Residents can contribute to their community by adopting a newly planted tree.

This is to certify that

has adopted a

Location:

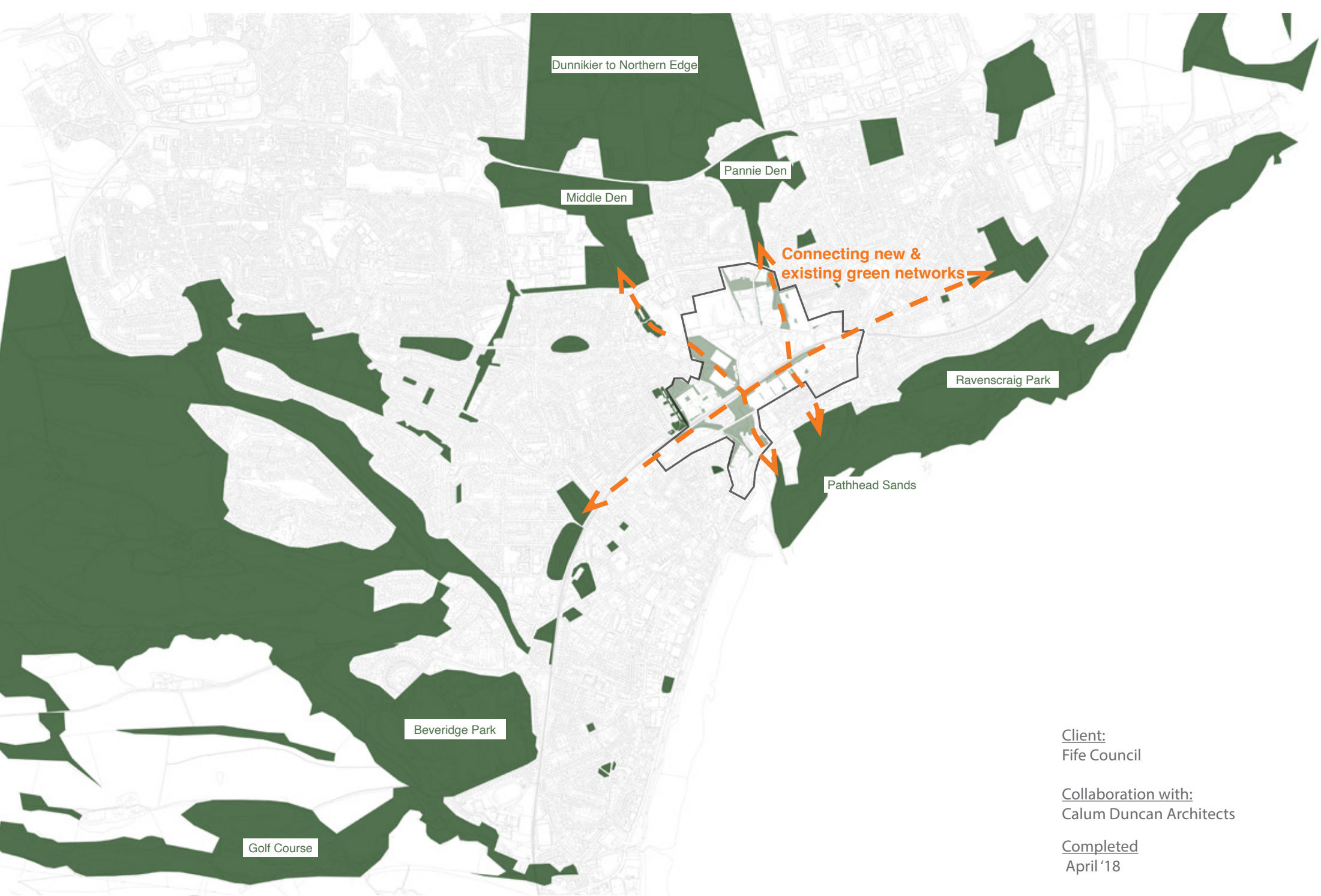
Planting date: Spring '22



Contact: fife.council@fife.gov.uk



**Project 02:
Green Infrastructure
Masterplan
Kirkcaldy**



Dunnikier to Northern Edge

Pannie Den

Middle Den

Connecting new & existing green networks

Ravensraig Park

Pathhead Sands

Beveridge Park

Golf Course

Client:
Fife Council

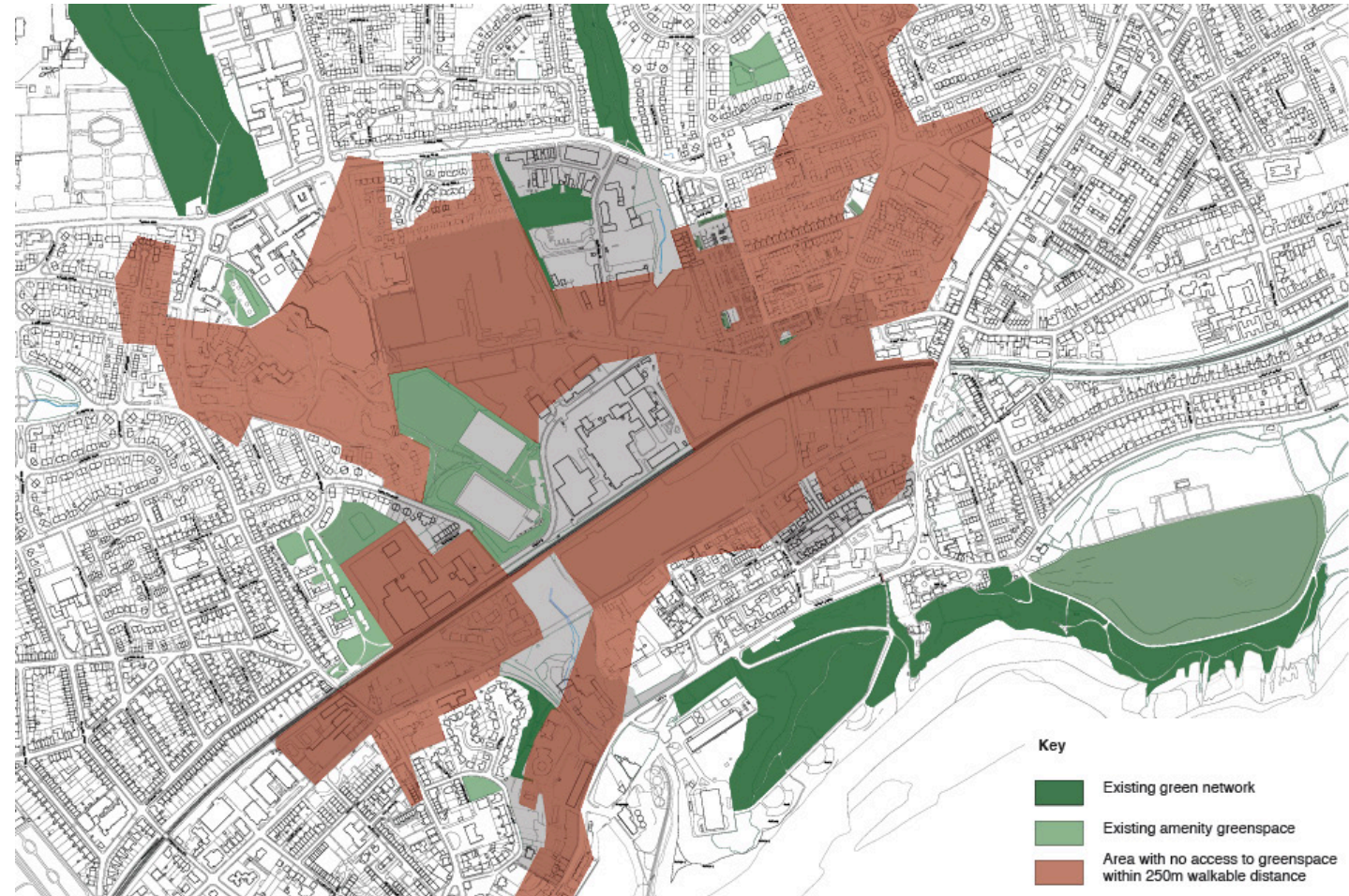
Collaboration with:
Calum Duncan Architects

Completed
April '18

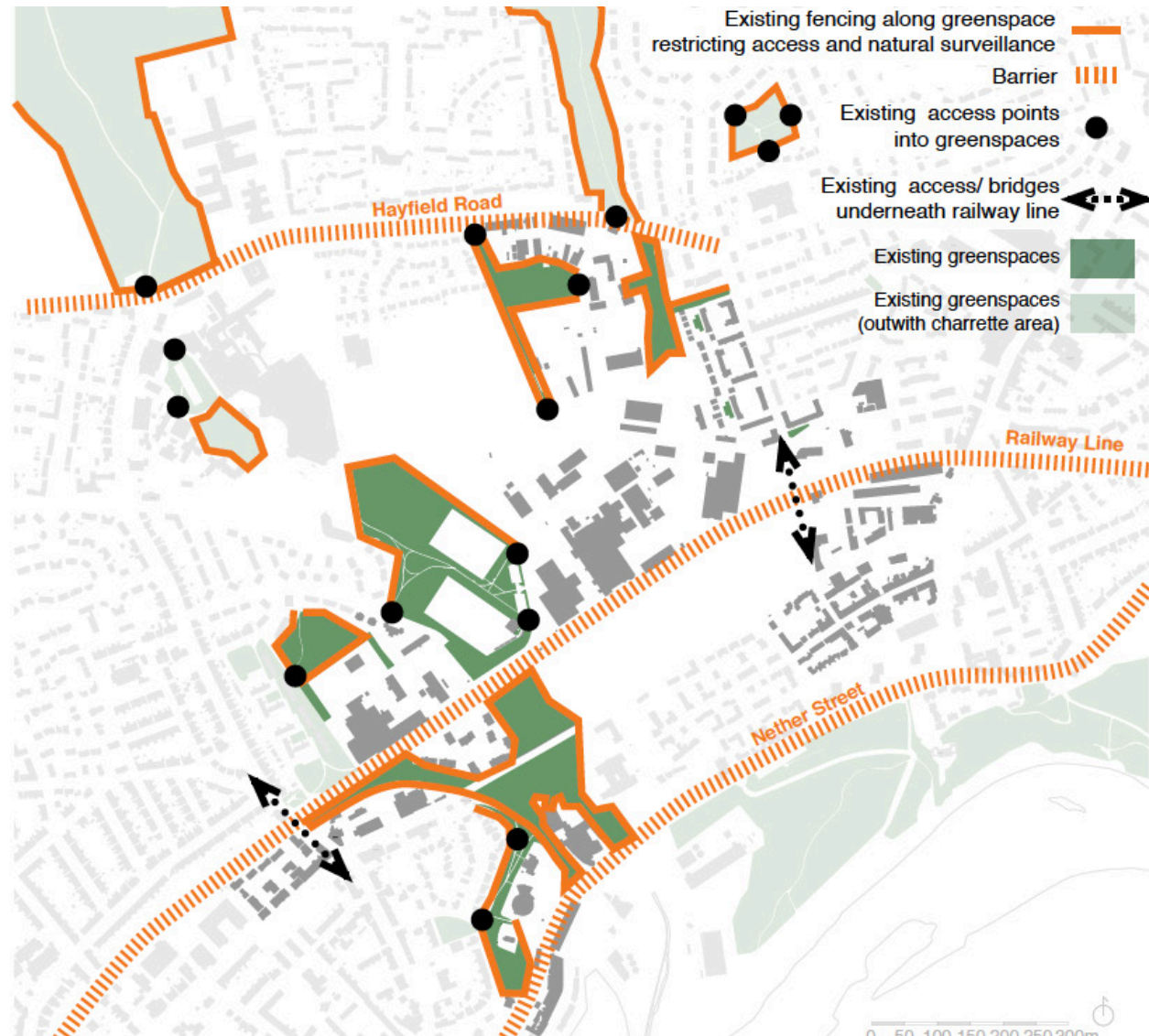


Existing lack of sufficient quality greenspace

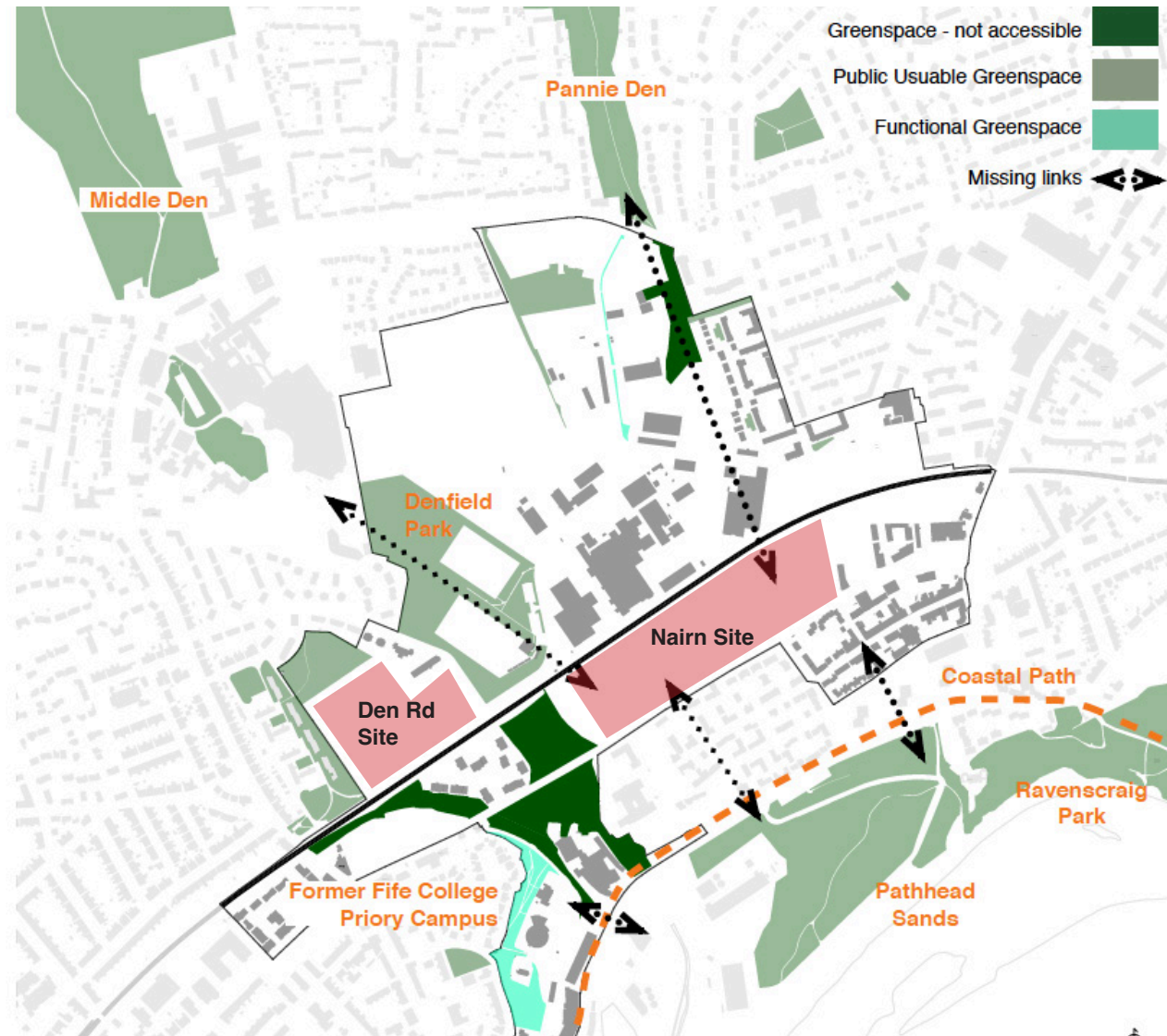
Area of insufficient access to greenspace
(60sqm per home within 250m walking distance)



Barriers



Existing greenspace with missing connections

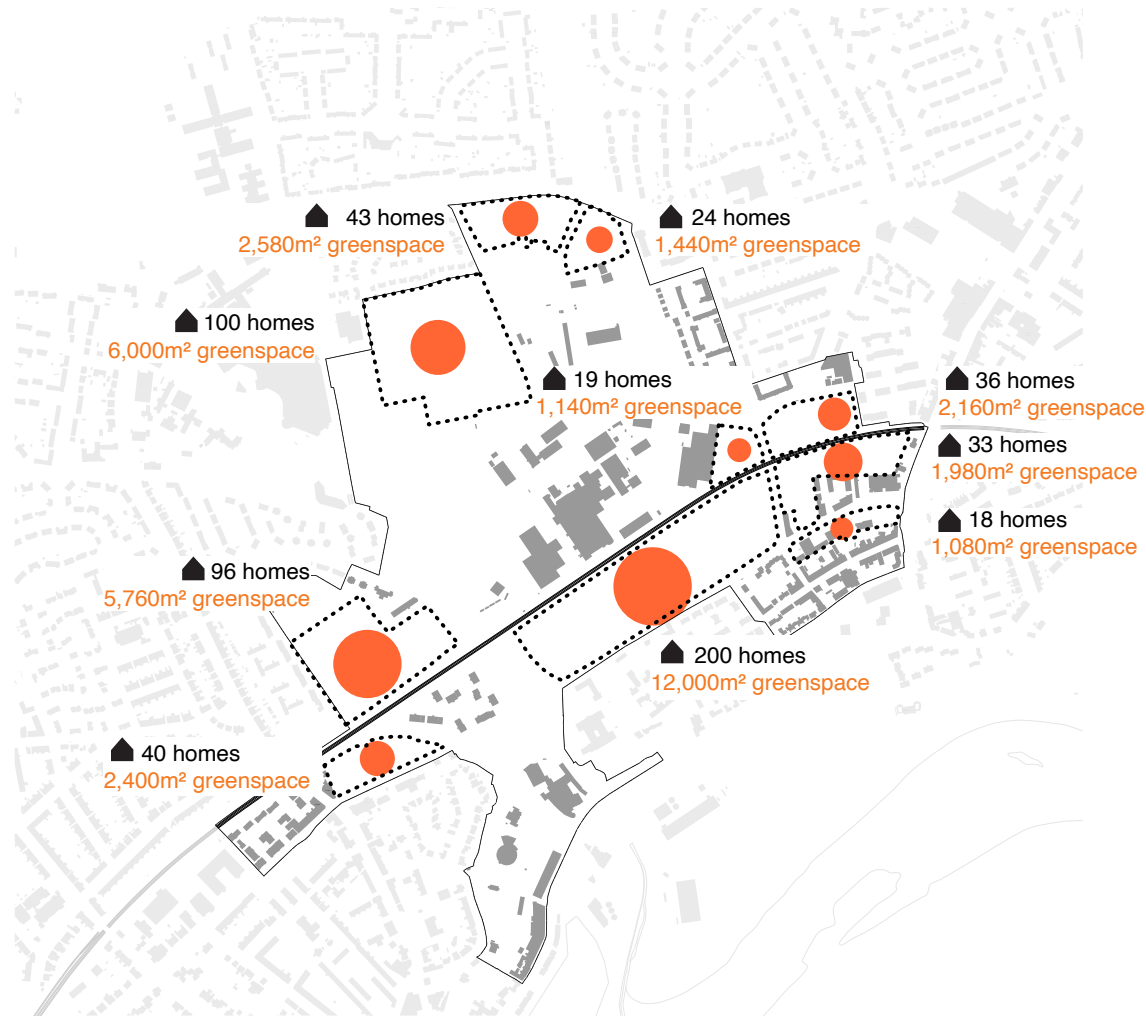


Proposed Masterplan



Providing new greenspaces

Sufficient greenspace provision for new development sites



Housing development guided and informed by Green Infrastructure

Greenspaces



Active frontages

