

FUTURE WOODLANDS SCOTLAND:

INNOVATIVE THINKING
FOR TREES AND NATIVE
WOODLAND

July 2024



Future Woodlands
Scotland



Future Woodlands Scotland

- Future Woodlands Vision: a Scotland in which trees and native woodlands are thriving for our wildlife, communities and climate.
- Contributing to the knowledge base around native woodland biodiversity and carbon through our Innovation and Research Grant programme.
- We also fund woodland creation through the [Future Woodlands Fund](#) supporting 'ghost woodland' restoration.

Future Woodlands Scotland has its origins in the Scottish Forest Alliance, a groundbreaking partnership, which was established in 2000 and supported by a £10 million investment by bp.

This has delivered...

3.4 million
TREES PLANTED



60 km
of public
paths



ONE MILLION TONNES
of carbon dioxide
expected to be
sequestered over
the next 50 years



**Scottish Forest
Alliance sites**

14

new native
woodland
sites across
5,000
hectares throughout Scotland

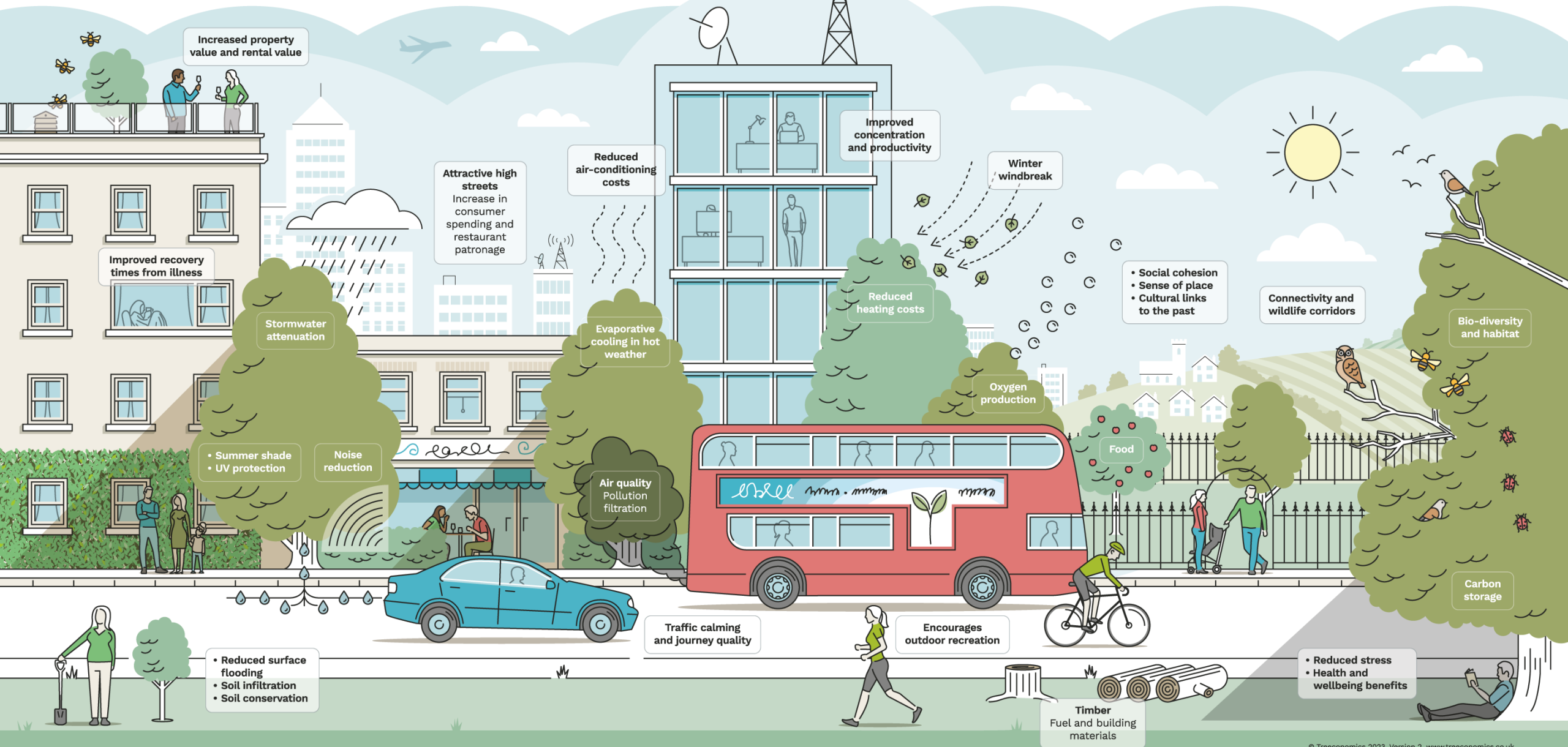


Urban Forestry Programme

Our Urban Forestry Vision: That over the 10 years of the programme towns and cities across Scotland make significant progress towards developing and achieving the 3-30-300 rule for urban forests that build healthier and more climate resilient communities.



The Benefits of Trees



Do greenspaces get enough funding?

In Scotland, during the pandemic:



What's holding towns and cities back?

- Planting trees in urban setting can be complex and expensive: Utilities, archaeology, built heritage, etc.
- Once trees are in there's a massive difference in survival rates depending on whether they're maintained. 30-50% of urban trees do not survive past 10 years.
- Organisations including Local Authorities are low on capacity to maintain woodland.



How can Future Woodlands Scotland help?

- Funding of £10m over 10 years (bp licence condition for Morven windfarm).
- Challenge Fund opening 17th September – guidance note available now.
- £2k - £100k over 3 years.
- Not-for-profits and Local Authorities.





TREE EQUITY SCORE UK

Search for a location



Data Zone ID S01006623

Population: 765

Urban area: 3.34 sq-km (60% of Data Zone area)

Aberdeen City, Scotland

61

Tree Equity Score

Ranked 272nd of 276 Data Zones
in Aberdeen City

Priority: **HIGHEST**

Current canopy cover: 10%



Canopy cover goal: 36%

Score indicators

Priority Index

Income Ranking (IMD)
3,719 out of 6,976

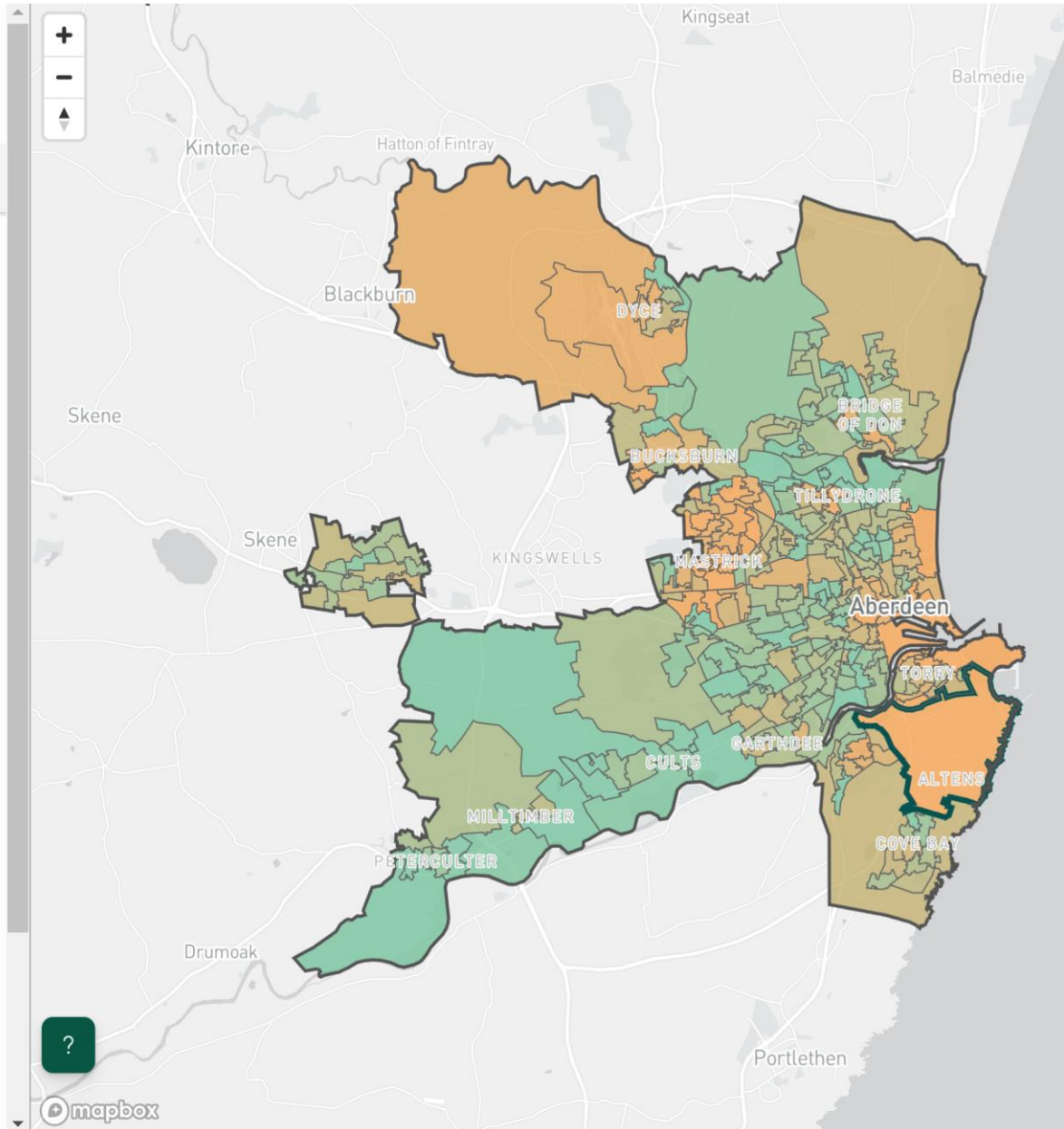
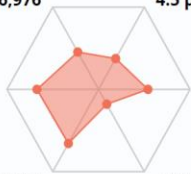
Air pollution: PM2.5, NO2
4.5 µg/m3, 9.8 µg/m3

Health Ranking (IMD)
2,283 out of 6,976

Heat disparity
-0.21° C

Employment Ranking (IMD)
2,330 out of 6,976

Children & older people
35%



mapbox

DYNAMIC REPORTS

MENU

Search for a location



Tree Equity Score sets a national standard in each UK country to help make the case for investment in areas with greatest need.

1 Find your score.

- Search your address or browse the map of over 34,000 Tree Equity Scores for England, Wales, Scotland and Northern Ireland.

2 Uncover where trees are in your community.

- Click anywhere on the map to uncover more information.
- Toggle map layers to see patterns.
- Use convenient map filters to prioritize areas with the greatest need.

3 Locate data to support allocation of resources and inform local authority and community efforts.

- Compare neighbourhood data points.
- Find summary reports for any local authority, constituency or country.
- Communicate what it takes to raise Tree Equity Scores for a local authority, constituency or country.
- Communicate the critical health, economic and environmental benefits to the community.



The Urban Forestry Programme:

Key milestones

July 2024:

Launch Programme and fund 2 projects

AUTUMN 2024

Begin development of Programme for building capacity and best practice

APRIL 2025:

Award funding to larger projects

MAY 2025 ONWARDS
Refine and improve programme for future rounds of funding

SEPT 2024:

Challenge Fund launches

DEC 2024:

Award funding to smaller projects

Contributing to the '3:30:300 rule':

- See 3 trees from home
- 30% tree canopy in neighbourhoods
- Green space within 300 metres



Quick Win #1: Treelink's Free Nut & Fruit Trees

Treelink will distribute Free Nut and Fruit Trees to residents in two neighbourhoods of Stirling (Raploch and Bannockburn), both of which have extremely low tree canopy cover and tree equity





Quick Win #2: Tree Warden Scheme

- ❖ Clyde Climate Forest covers the Glasgow City Region.
- ❖ Ambition to plant 18 million trees over the next decade, including 1.5 million urban trees.
- ❖ 1.8 million trees planted to date.
- ❖ We will be lead funder of Tree Warden Coordinator role over the next 3 years.



Thank You!

deshackett@futurewoodlands.org.uk

<https://www.futurewoodlands.org.uk/news/>



Future Woodlands Scotland
Innovative Thinking for Native Woodland