



RIG Arts

www.rigarts.org



Galoshans Festival 2024

Community Participants	1,215
Participations/Audiences	3,969
Freelance Creatives	254
Volunteers	23
Artist Residencies	3
Artist Bursaries	5
Consortium Bursaries	3
Artist Commission	1

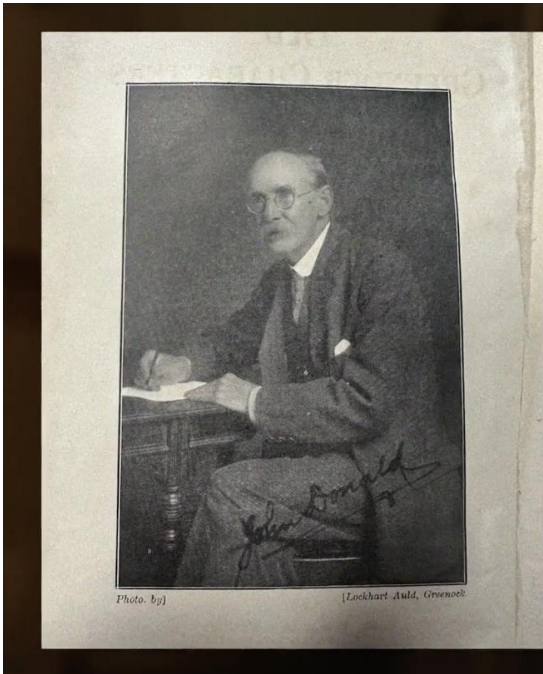
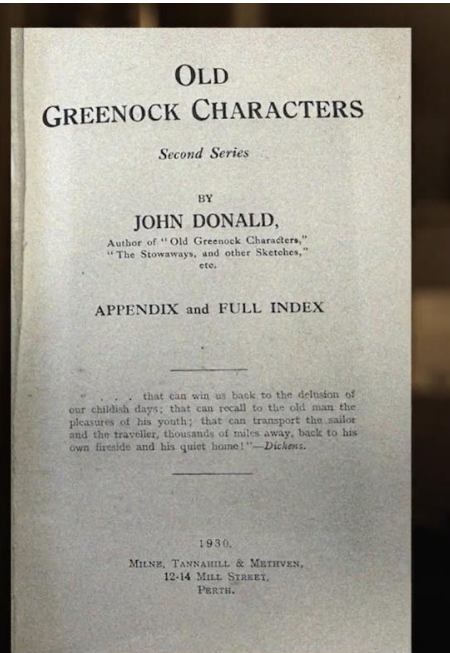


Photo. by J.

[Lookhart Auld, Greenock]



OLD GREENOCK CHARACTERS

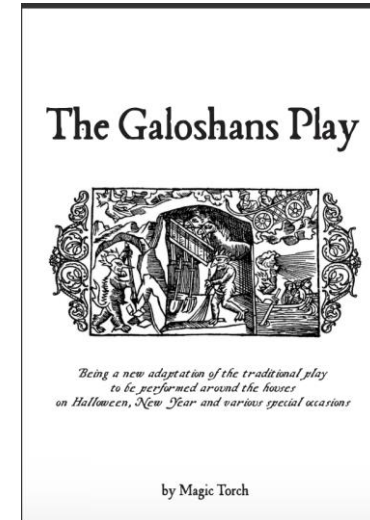
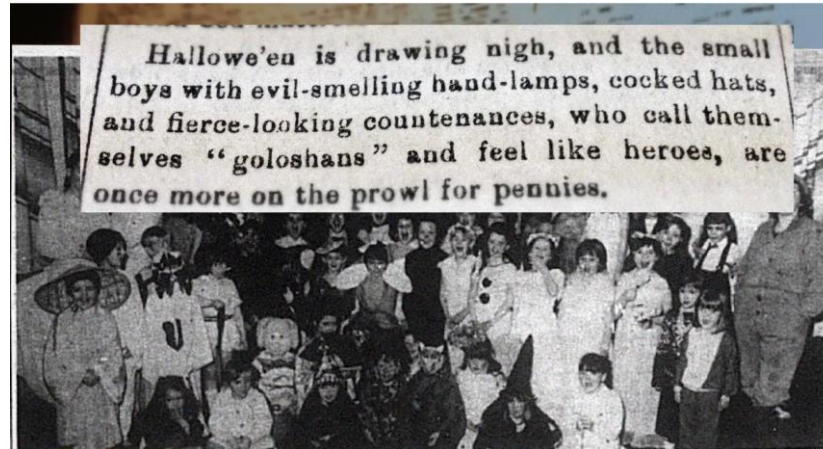
Second Series

BY
JOHN DONALD,
Author of "Old Greenock Characters,"
"The Stowaways, and other Sketches,"
etc.

APPENDIX and FULL INDEX

... that can win us back to the delusion of our childish days; that can recall to the old man the pleasures of his youth; that can transport the sailor and the traveller, thousands of miles away, back to his own fireside and his quiet home!—*Dickens.*

1930.
MILNE, TANNABILL & MATHVEN,
12-14 MILL STREET,
PERTH.



https://issuu.com/magictorchcomics/docs/galoshans_chapbook

Galoshans Consortium 2024

Inverclyde
Place Partnership

UZ Arts 2014



Our Partners



ALBA | CHRUTHACHAIL

Supported by



Successes

- **Revitalising Galoshans Traditions for Future Generations**

The Festival is helping to preserve and reimagine the language, folklore and traditions of Galoshans, ensuring they remain relevant, accessible and creatively alive for future generations to continue and reinterpret.

- **Developing the Galoshans Consortium**

The consortium model has proven successful, fostering a growing culture of programming around Galoshans.

- **Engaging Producers**

Since partnering with FERAL in 2022, the festival has benefited from sustained producing expertise with a deepening understanding of Galoshans identity and what works.

- **Artist Bursaries & Residencies**

The Festival supports artists through fairly paid opportunities to experiment, create new work and to make new networks.

- **A Key Event in Inverclyde's Cultural Calendar**

The Galoshans Festival has become a major highlight of Inverclyde's cultural calendar, bringing together communities, artists and audiences through ambitious and accessible cultural programming. It is an authentic community rooted festival.

- **Celebrating Inverclyde Through Culture**

The festival strengthens social cohesion and fosters community pride by celebrating Inverclyde's people, places and cultural identity through shared creative experiences and inclusive participation.

- **Growing Audiences and Increased Footfall**

The festival is steadily attracting a growing number of visitors from outwith Inverclyde, contributing to increased footfall and raising the area's profile in a positive way.

Challenges & Solutions

- **Local Authority Bureaucracy & Increasing costs**

Highlighted via the Inverclyde Cultural Partnership.

The ICP is a member of the Inverclyde Alliance's Place Thematic Group contributing to delivery against the Inverclyde Alliance Partnership Plan which is the overarching strategic document for the development of the area, and overseen by Inverclyde's Community Planning Partnership, the Inverclyde Alliance.



- **Bridging the gap between touring work and connection to new audiences**

A dual model and cross promotion approach has strengthened audience engagement, supported further by participatory programming.

A key challenge remains balancing the development of local audiences while also attracting visitors.



- **Negative Perceptions of Inverclyde**

Inverclyde has a strong community and a vibrant culture of creativity, but its external image can sometimes be less positive. People outside of Inverclyde may hold preconceived negative perceptions of the area. This highlights both a challenge and the Importance of events such as the Galoshans Festival in reshaping perceptions and showcasing Inverclyde at its very best.



- **Weather**

A robust wet weather plan. The Beacon Arts Centre enables the the Parade and Street Party to relocate indoors if required. Other benefits of this are that it can bring people who would not normally engage with an arts centre into the venue.



Policy has not directly shaped the design or direction of Galoshans. The festival has developed organically year on year through collaboration with communities, partners and artists. It is fundamentally led and driven by the consortium's commitment to quality, ambition, widening access & inclusivity.

The Galoshans Festival aligns strongly with key strategic frameworks:

A Culture Strategy for Scotland

- Strengthening culture
- Transforming through culture
- Empowering communities through culture

The Place Principle

- Promoting joined up, place based working
- Rooted in Inverclyde's identity, geography, and communities

Inverclyde Arts Creativity Action Plan

The Galoshans Festival:

- Increases visibility and value of arts and culture across Inverclyde
- Builds confidence and participation in creative activity
- Strengthens connectivity and communication between artists, organisations, and communities
- Supports creative health and wellbeing, including mental health and social connection
- Contributes to regeneration revitalising public spaces, tourism, and festival growth
- Builds social cohesion and community pride

Policy language has helped to communicate the impact of the festival in a way that funders and stakeholders can easily understand and support, providing a shared framework for demonstrating how it aligns with wider strategic priorities.





www.galoshansfestival.co.uk

Galoshans Festival 2024 | Behind the Scenes - <https://vimeo.com/1058163756>

'Finding the Spirit of Galoshans' Bircan Birol | <https://vimeo.com/1071945526?ts=0&share=copy> password: 1234

Galoshans Festival 2025 | <https://vimeo.com/1172467872>